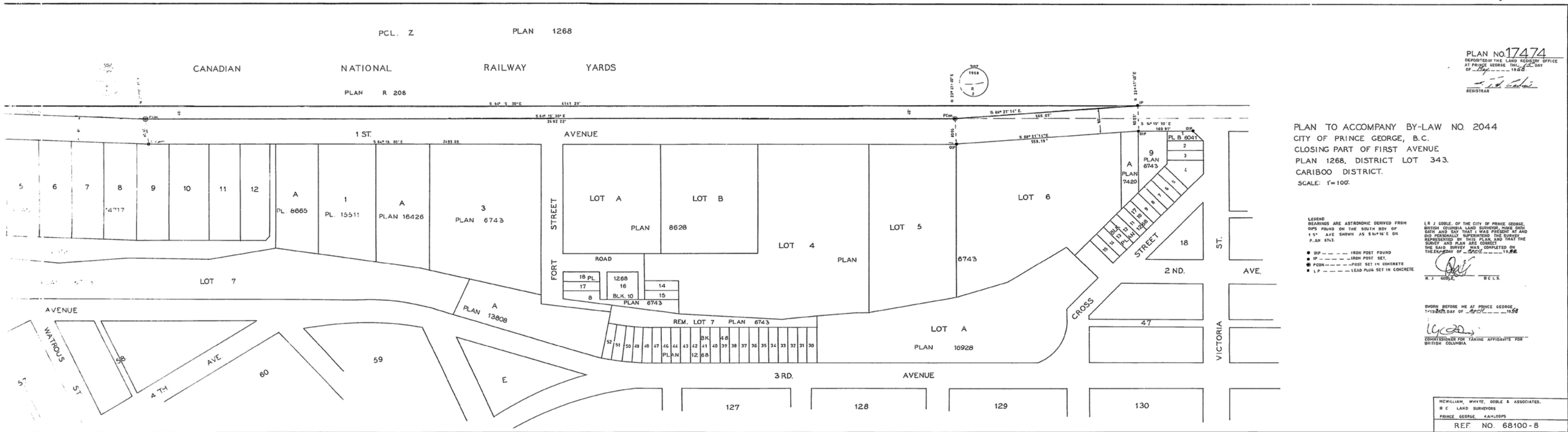


PCL. Z PLAN 1268

CANADIAN NATIONAL RAILWAY YARDS

PLAN R 208

PLAN NO. 17474  
DEPOSITED IN THE LAND REGISTRY OFFICE  
AT PRINCE GEORGE THIS 22<sup>ND</sup> DAY  
OF APRIL 1988  
R. J. GOBLE  
REGISTRAR



PLAN TO ACCOMPANY BY-LAW NO. 2044  
CITY OF PRINCE GEORGE, B.C.  
CLOSING PART OF FIRST AVENUE  
PLAN 1268, DISTRICT LOT 343.  
CARIBOO DISTRICT.  
SCALE: 1"=100'

LEGEND  
 BEARINGS ARE ASTRONOMIC DERIVED FROM  
 DIPS FOUND ON THE SOUTH BODY OF  
 1<sup>ST</sup> AVE SHOWN AS S 64° 18' E ON  
 PLAN 6743.

- DIP --- IRON POST FOUND
- IP --- IRON POST SET
- PCON --- POST SET IN CONCRETE
- LP --- LEAD PLUG SET IN CONCRETE

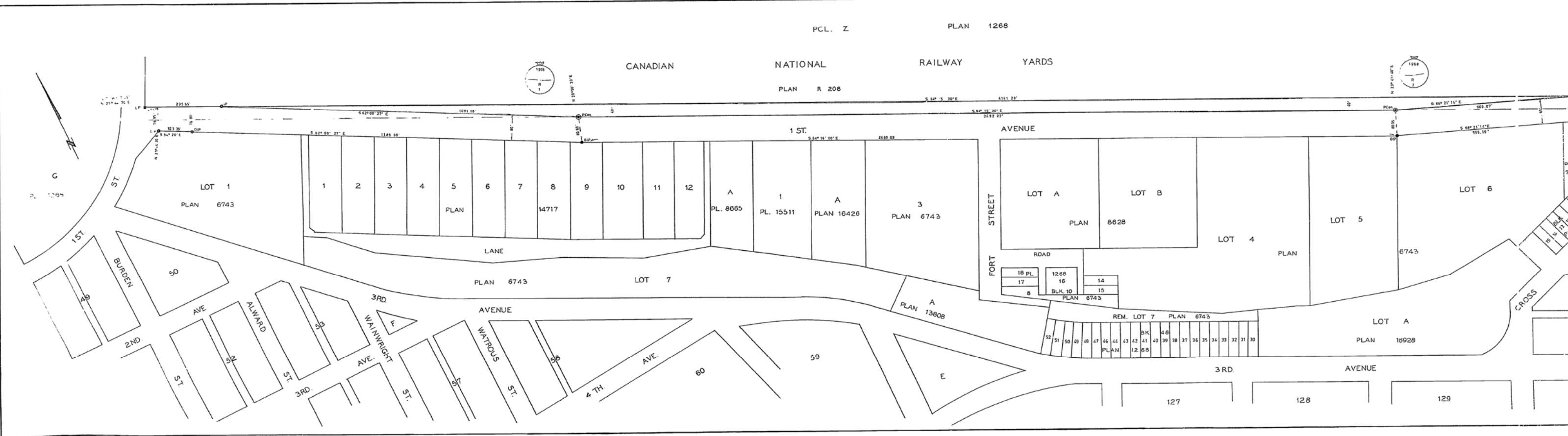
R. J. GOBLE, B.C.L.S.  
 SHOWN BEFORE ME AT PRINCE GEORGE  
 THIS 22<sup>ND</sup> DAY OF APRIL 1988  
 COMMISSIONER FOR TAKING AFFIDAVITS FOR  
 BRITISH COLUMBIA

MCWILLIAM, WHYTE, GOBLE & ASSOCIATES,  
B.C. LAND SURVEYORS  
PRINCE GEORGE, KANLOPS  
REF. NO. 68100-8

PCL. Z PLAN 1268

CANADIAN NATIONAL RAILWAY YARDS

PLAN R 208



18 PL	1268	14
17	16	15
8	BLK. 10	
PLAN 6743		

52	51	50	49	48	47	46	44	43	42	41	40	39	38	37	36	35	34	33	32	31	30
REM. LOT 7 PLAN 6743																					