

PLAN OF SUBDIVISION OF
 LOTS 23,24 & A,- BLOCK 71 - PLAN 752 &
 LOT A - BLOCK 50 - PLAN 752
DISTRICT LOT 937
 CARIBOO DISTRICT - BRITISH COLUMBIA

SCALE: 1" = 50'

NOTE: Bearings are astronomic, derived from the
 West Boundary of Block 71 - Plan 752
 as shown on Plan M - 286

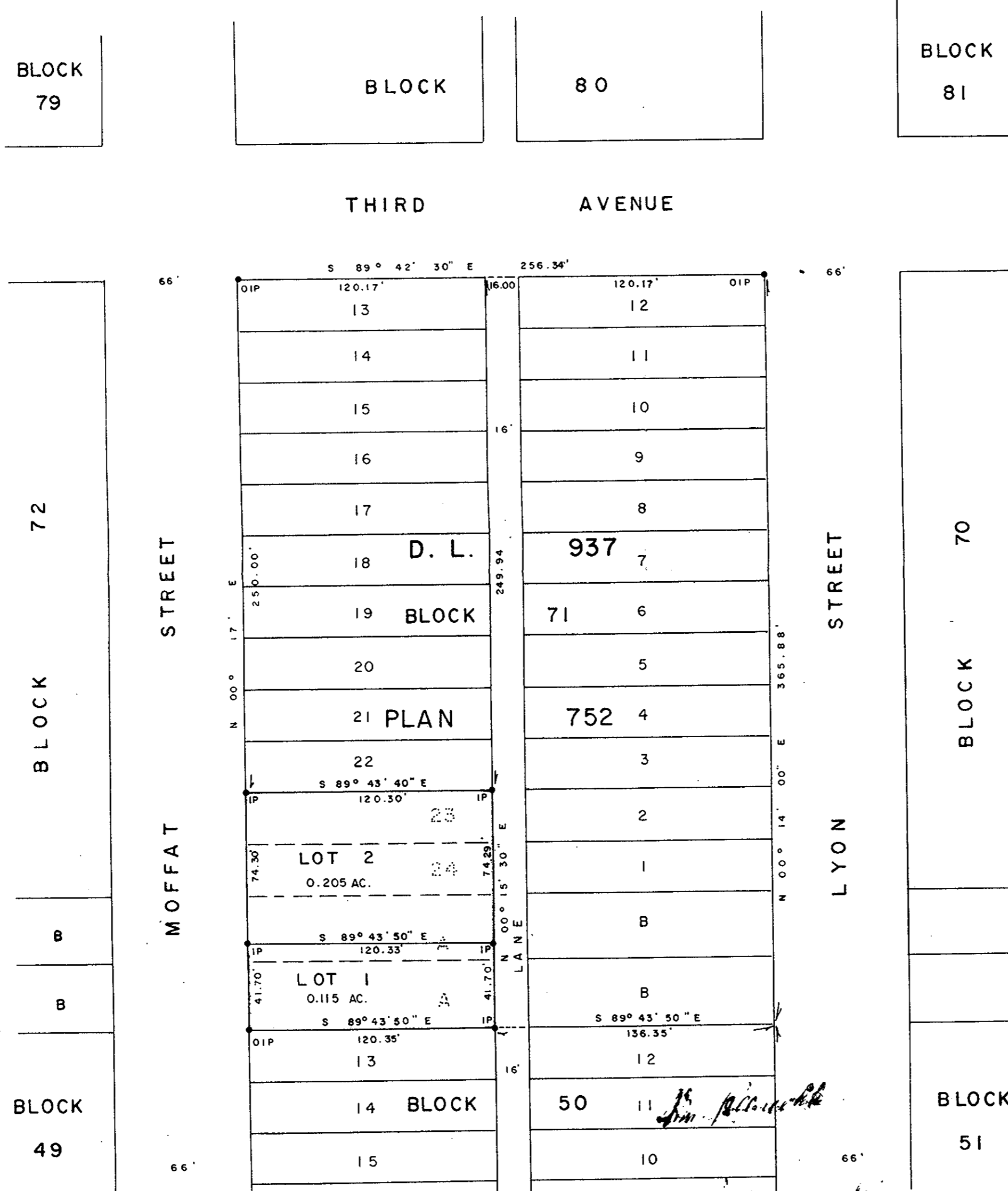
LEGEND: ● OIP denotes an old iron pin found.
 ● IP denotes an iron pin placed on this survey.
 ⊙ OPCON denotes an old concrete monument found.

RECEIVED

MAY 29 1968

CITY ASSESSOR
 PRINCE GEORGE

PLAN No **17444**
 Deposited in the Land Registry
 Office at Prince George, B.C. this
 30th day of APRIL, 1968.
 Registrar

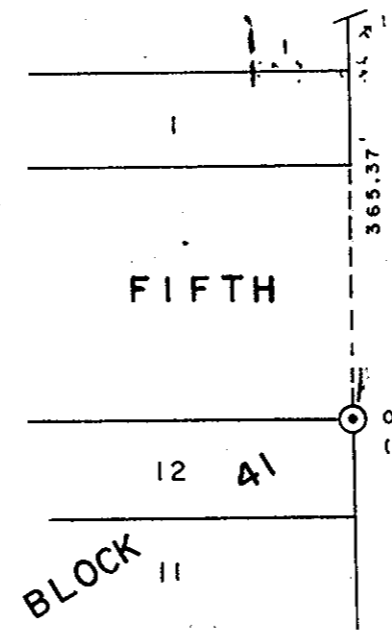


I, DONALD A. DUFFY, of the City of Prince George,
 a British Columbia Land Surveyor make oath and say
 that I was present at and did personally superintend
 the survey represented by this plan and that the survey
 and plan are correct. The said survey was completed
 on the 13th day of SEPTEMBER, 1966.

[Signature of Donald A. Duffy]
 B. C. L. S.

Sworn before me this 16th
 day of SEPTEMBER, 1966

[Signature of Commissioner]
 A Commissioner for taking Affidavits
 within the Province of British Columbia.



Reapproved under the Land Registry Act
 this 15th day of FEB 1968
C. E. Obot P. Eng.
 Approving Officer, City of Prince George.

Reapproved under the Land Registry Act,
 this 26th day of APR 1968
C. E. Obot
 Approving Officer, City of Prince George.

Approved under the Land Registry Act
 this 30th day of MARCH, 1967
C. E. Obot P. Eng.
 Approving Officer, City of Prince George.

[Signature]
 Owner
[Signature]
 Witness AS TO BOTH SIGNATURES