

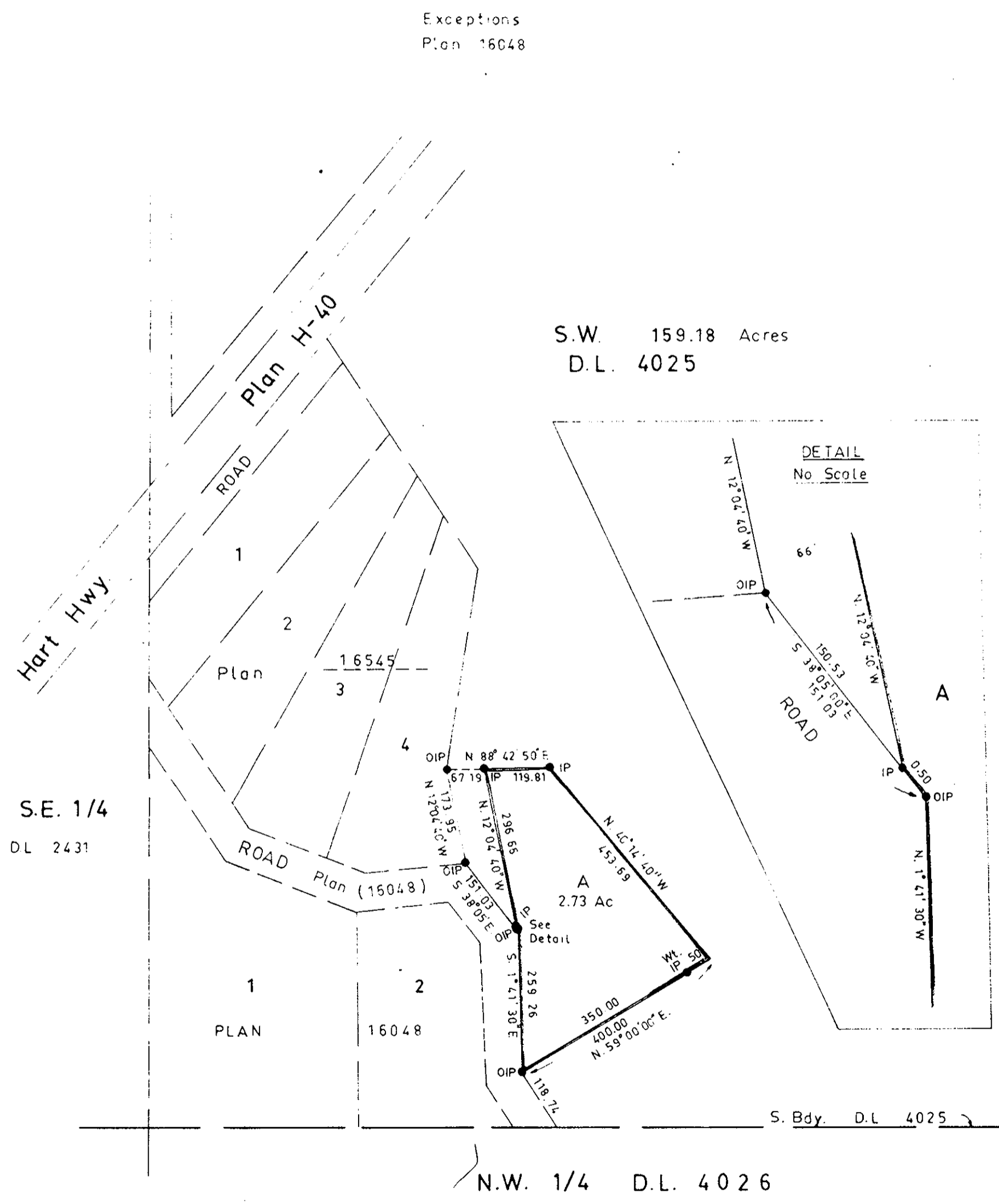
PLAN OF SUBDIVISION OF PART  
OF THE S.W. 159.18 ACRES, OF  
DISTRICT LOT 4025.  
CARIBOO DISTRICT.

SCALE: 1" = 200'

PLAN No 17421  
Deposited in the Land Registry Office at  
Prince George on the 5<sup>th</sup> day of APRIL 1968.

*R. Hooper*  
DEP. Registrar

Exceptions  
Plan 16048



- Bearings are astronomic and are derived from  
OIPs along East Bdy. of Road, shown as  
S 1° 41' 30" E, Plan 16545
- Pcon Standard Concrete Post
  - P Rock Standard Rock Post
  - PP Standard Pipe Post
  - IP Standard Iron Post
  - WP Wooden Post
  - LP Lead Plug
  - O Denoting "Old"
  - WT Denoting "Witness"

V. Bartell of the City of Prince George  
British Columbia Land Surveyor, make oath and  
say that I was present at and did personally  
superintend the survey represented by this  
plan and that the survey and plan are correct  
The said survey was completed on  
the 20th day of December 1966.

*Victor Bartell*  
B.C.L.S.

Sworn before me at PRINCE GEORGE  
this 9 day of JANUARY 1967.

*W. S. Bradley*  
A Commissioner for taking affidavits  
within British Columbia.

Approved under the Land Registry Act  
on the 1<sup>st</sup> day of March 1967

*W. S. Bradley*  
Approving Officer  
Dept. of Highways

Owner *Janet R. Wall*  
*M. H. Wall*

Reapproved on the 27<sup>th</sup> day of March 1968

*W. S. Bradley*  
Approving Officer  
Department of Highways

witness *W. S. Bradley*  
esto both signatures

Inspected this 12<sup>th</sup> day of March 1968

*Victor Bartell*  
V. Bartell B.C.L.S.

McWilliam - Whyte - Goble & Associates  
B.C. Land Surveyors  
Kamloops - Prince George  
Checked f s d x Ref. No. 66110-C