

PLAN OF SUBDIVISION OF PART OF  
**DISTRICT LOT 847**  
 CARIBOO DISTRICT - BRITISH COLUMBIA

Plotted (NV)

SCALE 1" = 200'

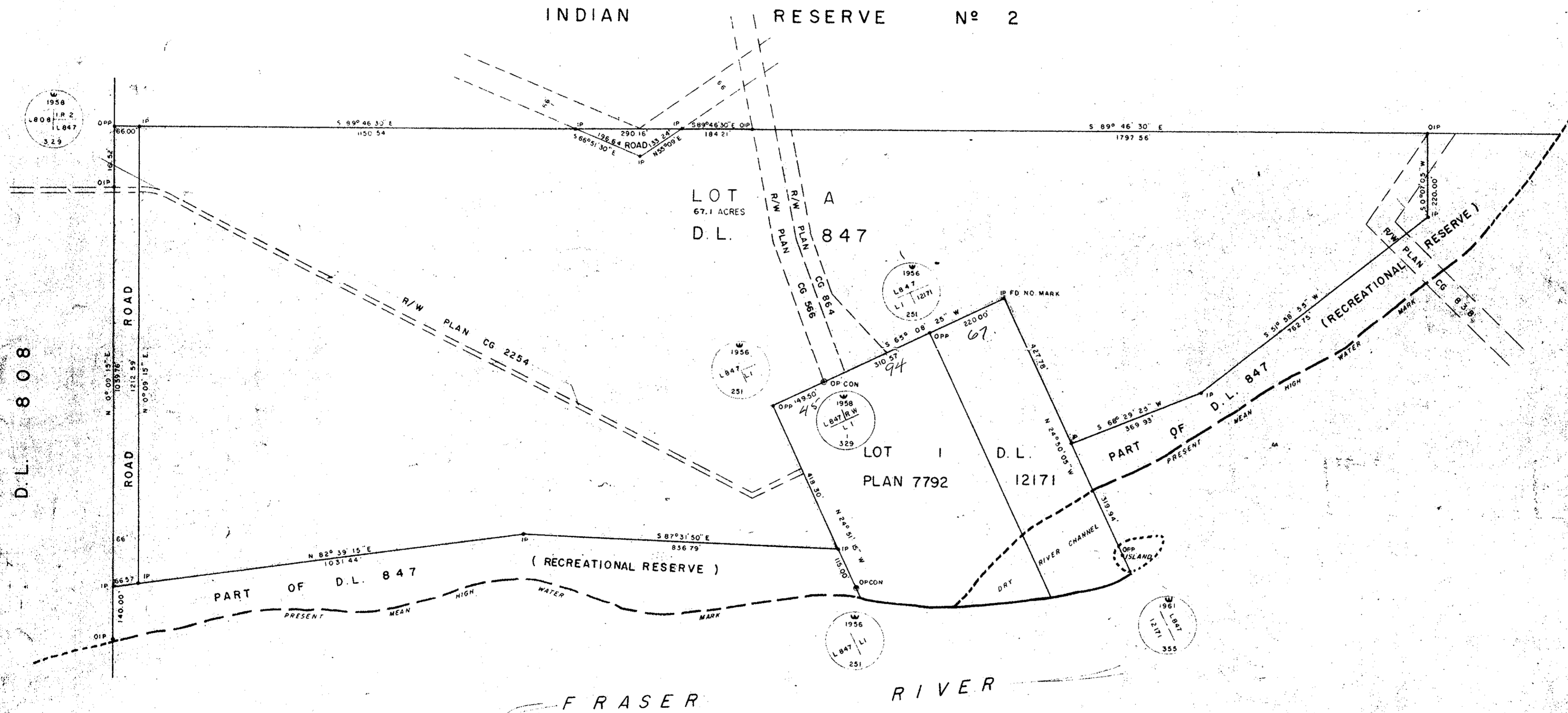
PLAN No **17414**

NOTE: Bearings are astronomic, derived from the West Boundary of District Lot 847 as shown on Plan 7792.

Deposited in the Land Registry Office of Prince George, B.C. this 26 day of APRIL, 1968.

LEGEND:  
 • OIP denotes an old iron pin found  
 • OPP denotes an old pipe post found  
 • OPCON denotes an old concrete monument found  
 • IP denotes an iron pin placed on this survey

*R. H. Hooper*  
 D.P. Registrar



I, DONALD A. DUFFY, of the City of Prince George, a British Columbia Land Surveyor make oath and say that I was present at and did personally superintend the survey represented by this plan and that the survey and plan are correct. The said survey was completed on the 27th day of November, 1967.

*D. A. Duffy*  
 B. C. L. S.

Sworn before me this 4<sup>TH</sup> day of DEC, 1967.

*[Signature]*  
 A. Commissioner for taking Affidavits for British Columbia.

INLAND NATURAL GAS CO. LTD.

*B. M. Patterson*  
 VICE-PRESIDENT  
*[Signature]*  
 SECRETARY

*[Signature]*  
 I hereby certify that this is a true copy of the Official Plan on deposit in the Department of Lands, Forests and Water Resources and numbered Plan & Tube 832.



Surveyor-General, Victoria, B.C.  
 February 26, 1968

Approved under the Land Registry Act this 26 day of MARCH, 1968.

*[Signature]*  
 Approving Officer, Dept. of Highways

W.D. USHER & ASSOCIATES  
 LAND SURVEYORS  
 PRINCE GEORGE, B.C.  
 CC 13-17 2-1-68