

2H. 4395

MAP
E14113
202510

17413
97.5 AC.

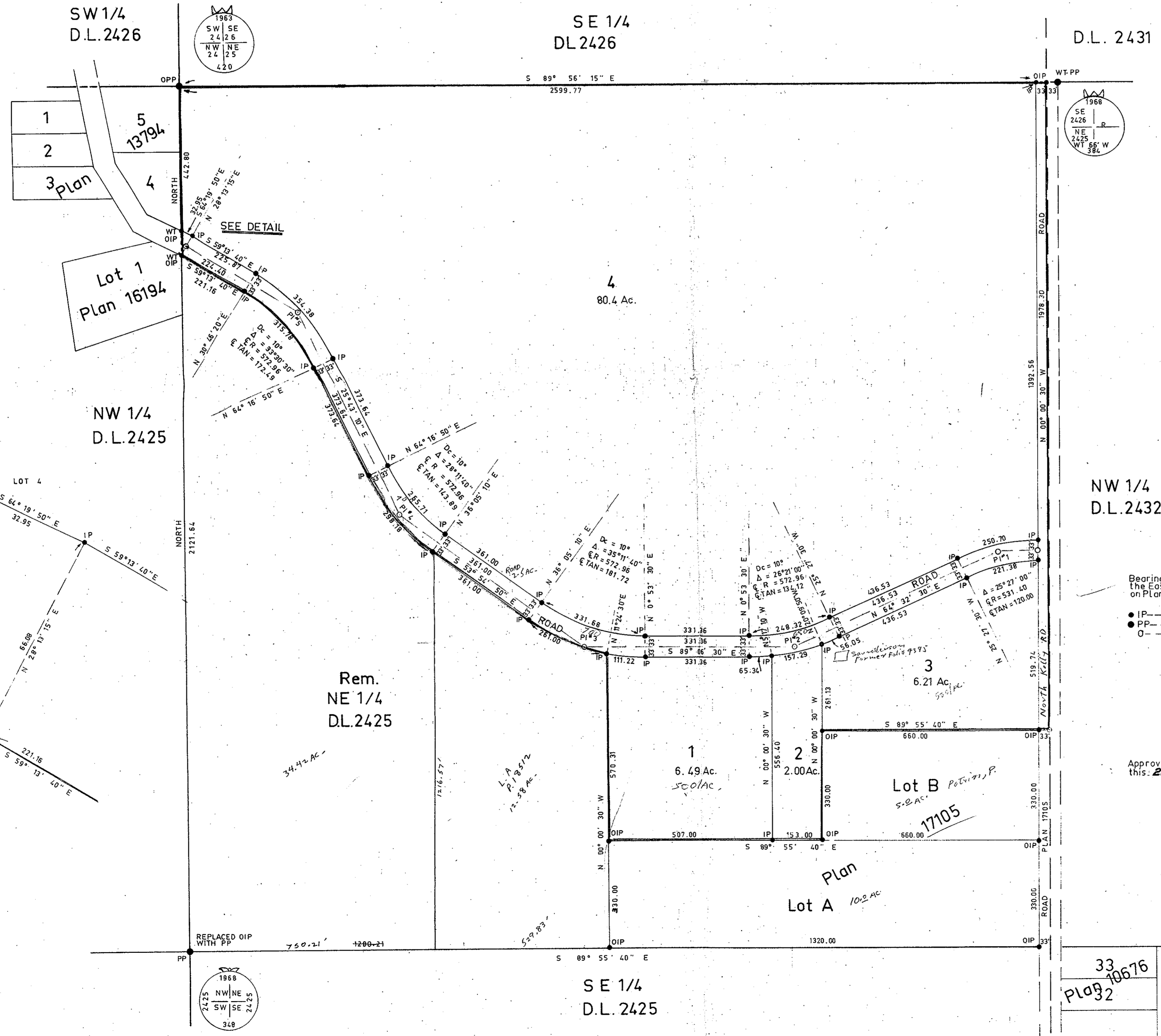
PLAN OF SUBDIVISION OF PART OF THE NE 1/4 OF DISTRICT LOT 2425 CARIBOO DISTRICT

SCALE: 1" = 200 FEET

PLAN No. 17413

Deposited in the Land Registry Office
of Prince George this 28th day of
February 1968.

T. W. CARLOW
Registrar



DETAIL
SCALE: 1" = 20'

LEGEND

Bearings are astronomic and derived from
the East by D.L. 2425 shown as N 0° 00' 30" W
on Plan 17105

- IP ----- Standard iron post set
- PP ----- Standard pipe post set
- ----- Denotes old

I. V. Bartell of the City of Prince George,
British Columbia Land Surveyor make oath
and say that I was present at and did personally
superintend the survey represented by this
Plan and that the survey and Plan are correct.
The said survey was completed on the
8th day of January, 1968.

Victor Bartell
B. C. L. S.

Approved under the Land Registry Act
this 28th day of February 1968.

Alfred Smolok
Approving Officer
Dept. Highways

Sworn before me at Prince George, B.C.
this 9th day of February 1968.

[Signature]
A Commissioner for taking
affidavits for British Columbia

Owner *Carl Sanderson*

Witness *D. Blackwell*

33
10676
Plan 92

McWilliam, Whyte, Goble & Associates
B. C. Land Surveyors
Kamloops Prince George
REF. No. 67350