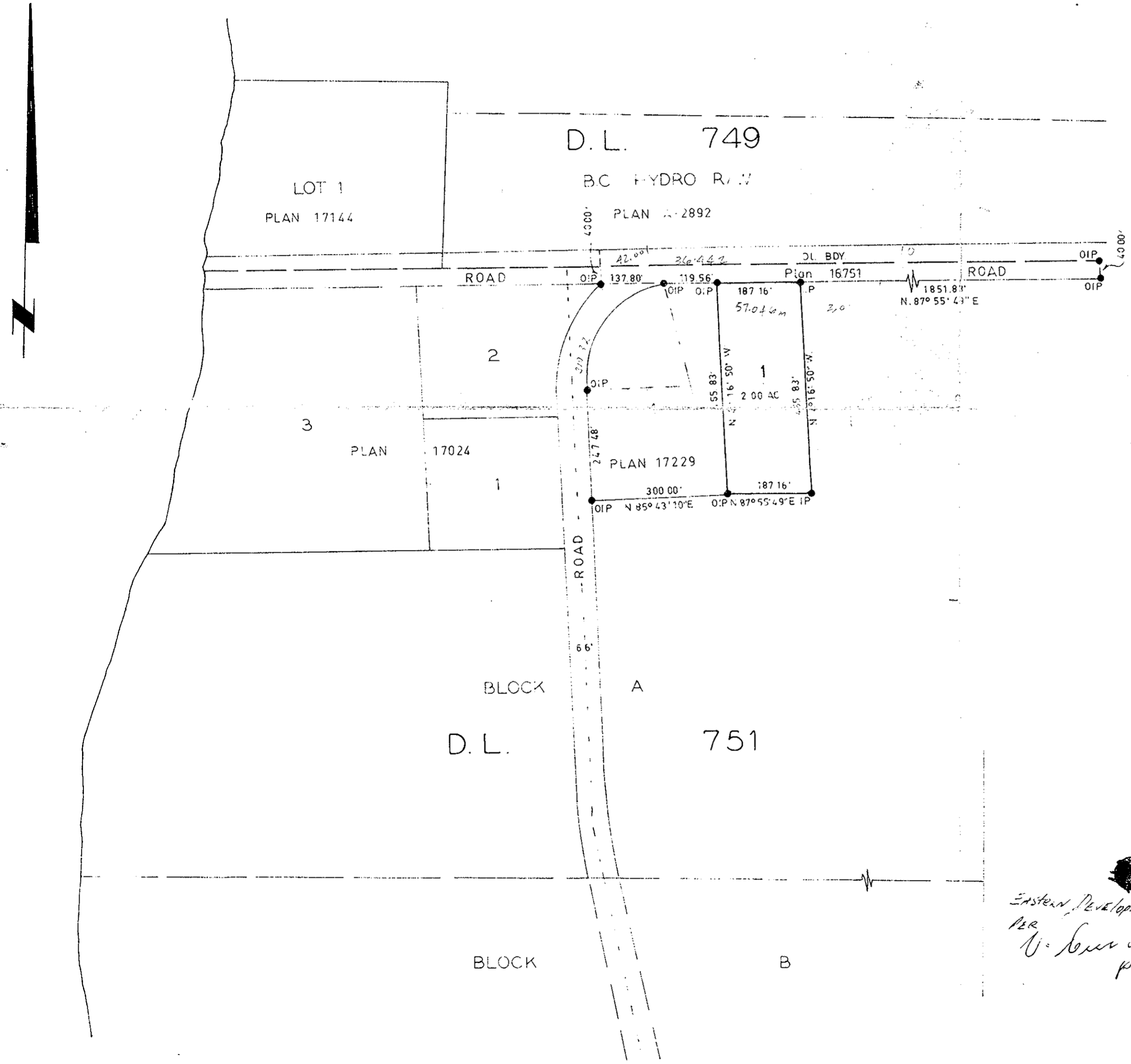


PLAN OF SUBDIVISION OF PART  
 OF BLOCK A, DISTRICT LOT 751  
 EXCEPT PLANS 17024, 16751 AND 17229  
 CARIBOO DISTRICT  
 SCALE: 1"=200'

PLAN No 17381

Deposited in the Land Registry Office at  
 Prince George on the 13<sup>th</sup> day of MARCH 1968.

*[Signature]*  
 Registrar



Bearings are astronomic and are derived from  
 OIP's on the S bdy. of road shown as  
 N. 87° 55' 49" E on plan 16751.

- Pcon. Standard Concrete Post.
- P Rock Standard Rock Post
- PP Standard Pipe Post.
- LP Standard Iron Post.
- P Wooden Post.
- LP Lead Plug
- Denoting "Old"
- WT Denoting "Witness"

I, V Bortell of the City of Prince George,  
 British Columbia Land Surveyor, make oath and  
 say that I was present at and did personally  
 superintend the survey represented by this  
 plan and that the survey and plan are correct.  
 The said survey was completed on  
 the 26 day of January 1968.

*Victor Bortell*  
 V. Bortell, B.C.L.S.

Sworn before me at Prince George  
 this 15 day of February 1968.

Approved under the Land Registry Act  
 on the 28<sup>th</sup> day of February 1968.

*[Signature]*  
 Approving Officer  
 Dept. of Highways

*[Signature]*  
 A commissioner for taking affidavits  
 for British Columbia

Owner *Lanson Agnew Ltd.*

Witness *[Signature]*

*Eastern Developments Ltd*  
 PER *[Signature]*  
 PRES.

*Williams Development Ltd*  
 PER *[Signature]*  
 PRES.

McWilliam—Whyte—Goble & Associates		
B.C. LAND SURVEYORS		
KAMLOOPS		PRINCE GEORGE
Job No.	FB-P	FILE NO.
		68011