

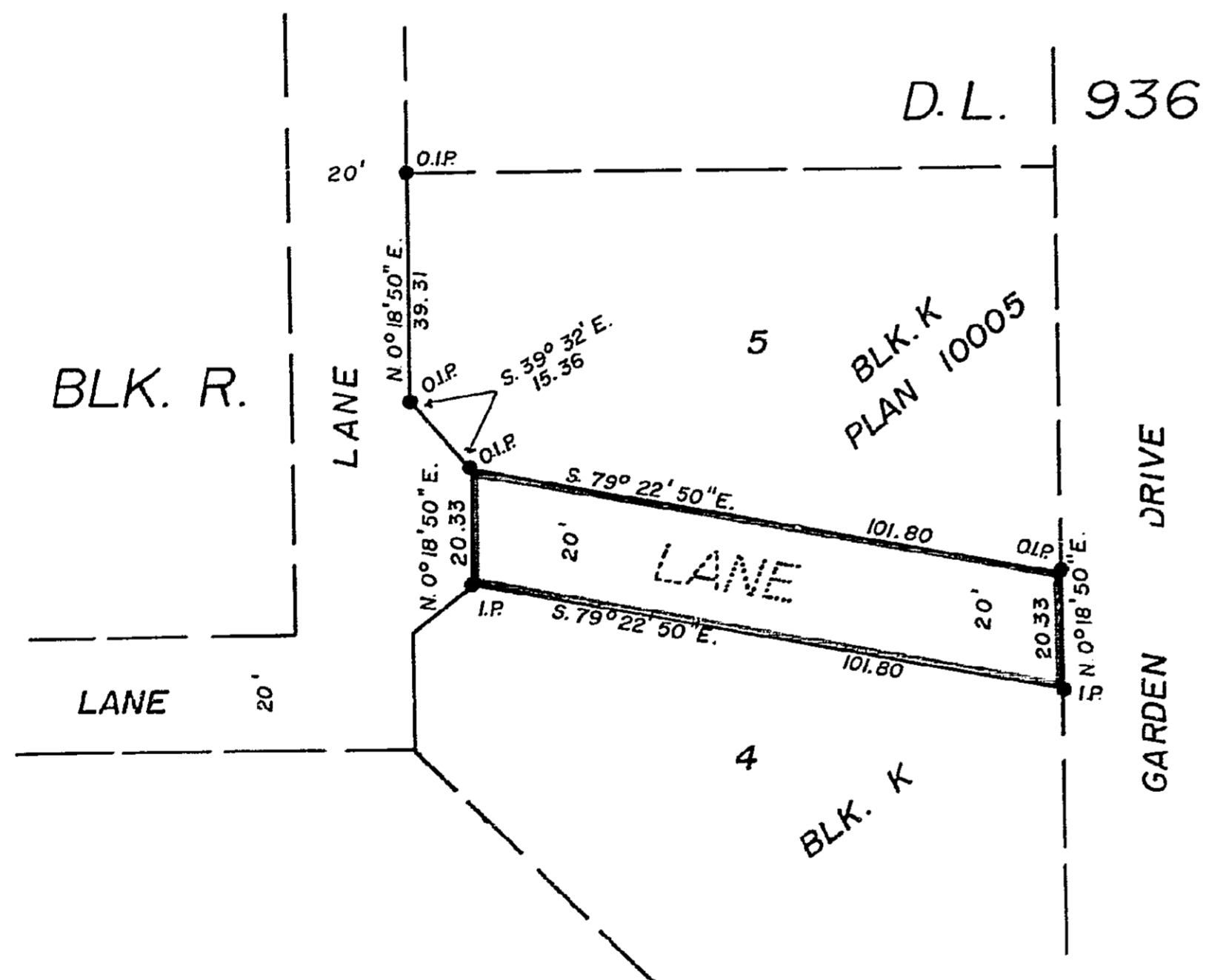
Plan to Accompany By Law No. 2008,
 City of Prince George
 Closing Lane Between Lots 4 and 5, Block K,
 Plan 10005, Lot 936, Cariboo District.

SCALE: 1" = 30'

PLAN NO. 17347

Deposited in the Land Registry Office at
 Prince George... this 22 day of Feb... 1968

[Signature]
 Registrar



LEGEND

Bearings are astronomic derived from
 O.I.P.'s. on South Boundary Lot 5, Plan 10005.

- O.I.P. Old Iron Post Found
- I.P. Iron Post Set

Certified Correct

this 13 day of December 1967...

[Signature]
 A. Daniluck B.C.L.S.

McWilliam Whyte Goble & Associates,
 B.C. Land Surveyors,
 Prince George B.C.

REF. NO. 67100-29