

RECEIVED

MAR 27 1968

CITY ASSESSOR
PRINCE GEORGE

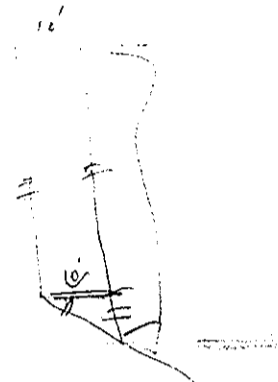
PLAN No 17346

Deposited in the Land Registry Office at
Prince George on the 22nd day of F.E.B. 1968.

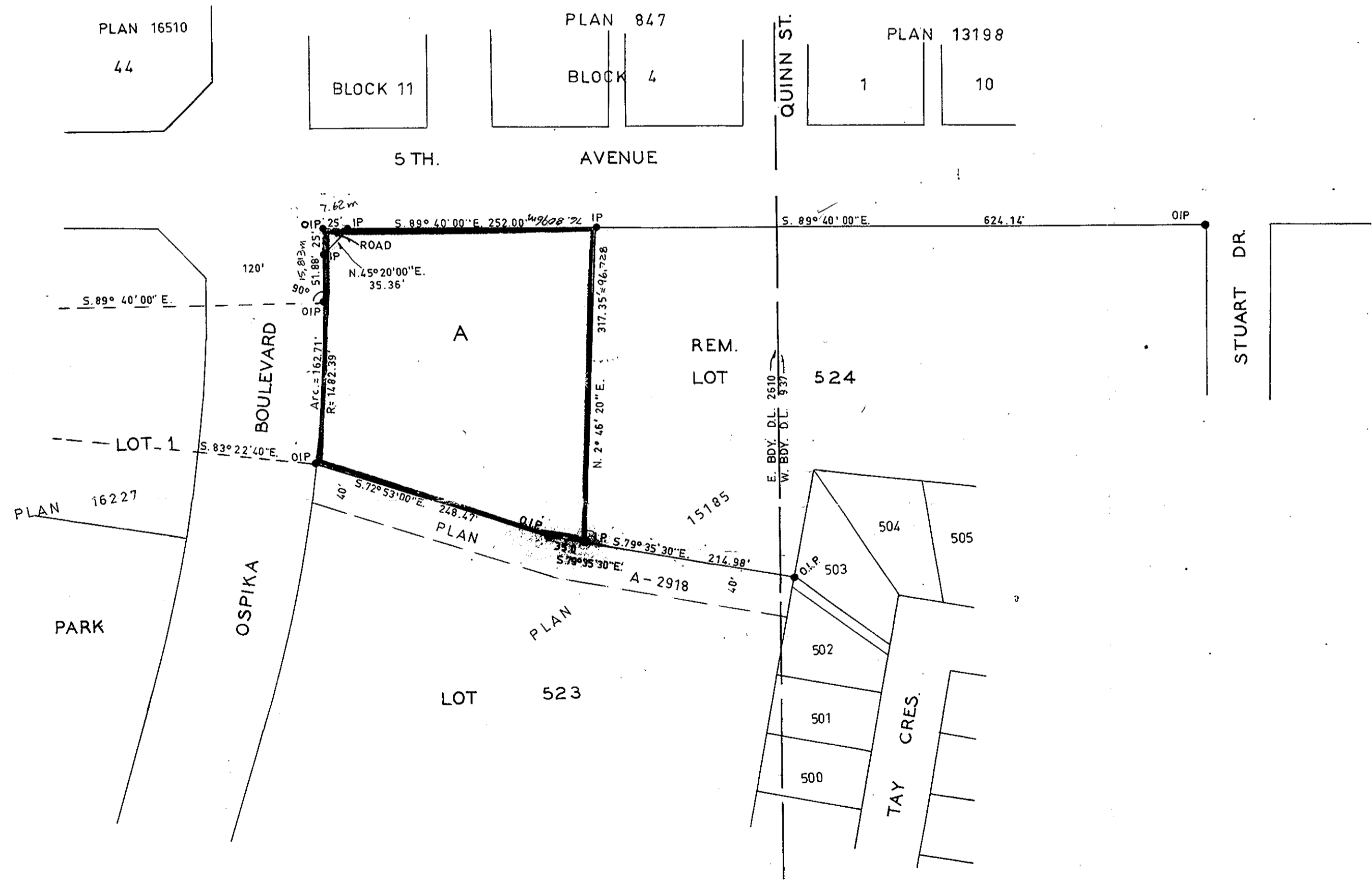
"J.W. CARLOW"
Registrar

PLAN OF SUBDIVISION OF
PART LOT 524, PLAN 15185,
DISTRICT LOT 2610,
CARIBOO DISTRICT.

SCALE: 1" = 100'



Blaine



Bearings are astronomic and are derived from
O.I.P.s. on the N. bdy. of lot 524 Plan 15185.

- ⊙ P.con. Standard Concrete Post.
- ⊙ P.Rock Standard Rock Post.
- P.P. Standard Pipe Post.
- I.P. Standard Iron Post.
- P. Wooden Post.
- L.P. Lead Plug.
- Denoting "Old"
- WT. Denoting "Witness"

I, A. Daniluck, ... of the City of Prince George ...
British Columbia Land Surveyor, make oath and
say that I was present at and did personally
superintend the survey represented by this
plan and that the survey and plan are correct.
The said survey was completed on
the 28th day of January, 1968.

A. Daniluck
A. Daniluck, B.C.L.S.

Sworn before me at *Prince George*
this 30th day of *January*, 1968.

W. J. ...
A Commissioner for taking affidavits
for British Columbia.

Approved under the Land Registry Act
on the 15th day of FEB 1968

C. J. ...
Approving Officer
City of Prince George

Owner

Witness

The Seal of the Corporation of
the City of Prince George was
affixed hereto in the presence of:

James ...
Mayor

Quinn ...
Clerk

McWilliam—Whyte—Goble & Associates		
B.C. LAND SURVEYORS		
KAMLOOPS—PRINCE GEORGE		
Job No.	FB-P	FILE No.
		68100-5