

PLAN No 17334  
 Deposited in the Land Registry  
 Office at Prince George, B.C. this  
19<sup>th</sup> day of FEBRUARY, 1968.

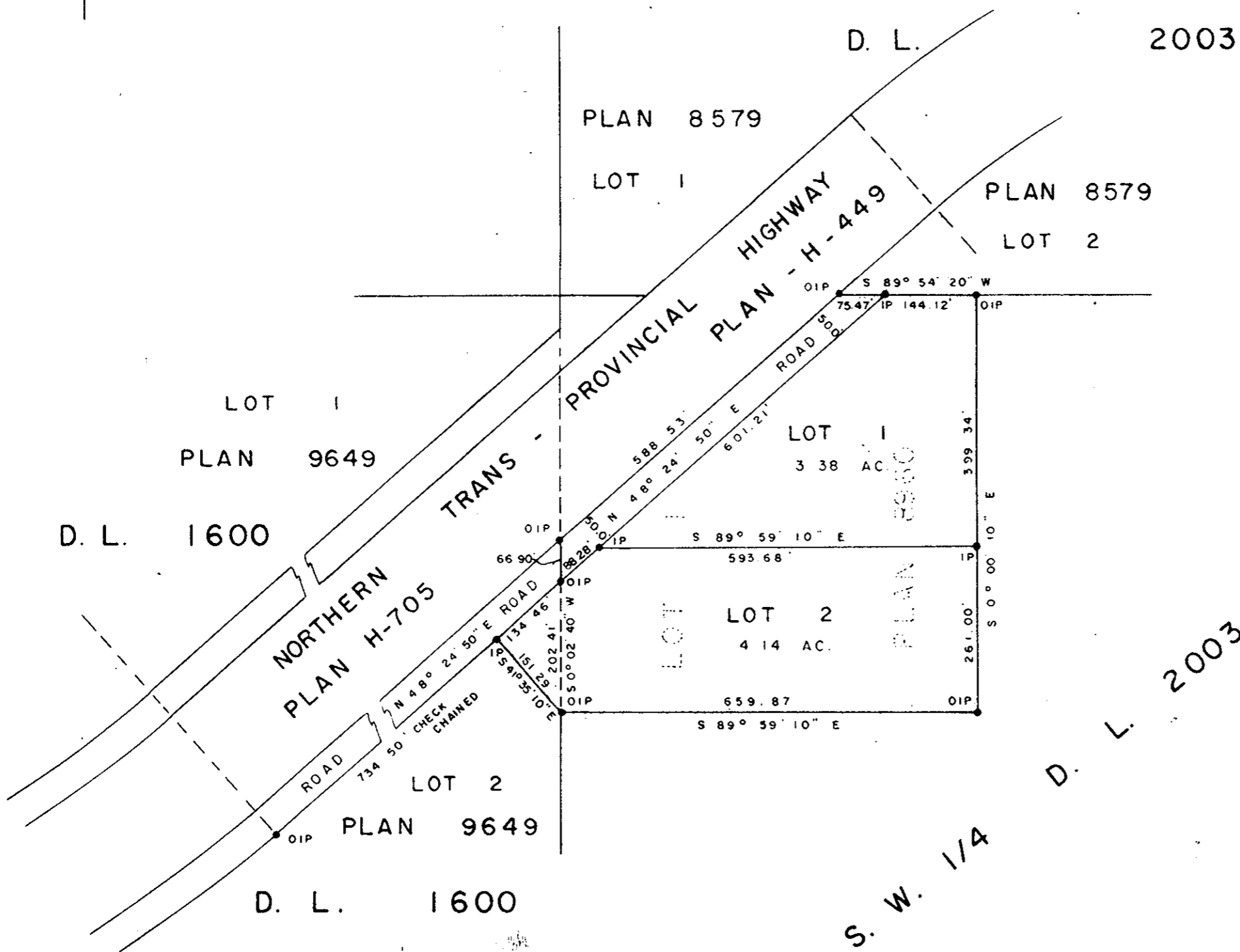
*[Signature]*  
 Registrar

PLAN OF SUBDIVISION OF  
 LOT 1 - PLAN 8960  
 DISTRICT LOT 2003 &  
 PART OF LOT 2 - PLAN 9649  
 DISTRICT LOT 1600  
 CARIBOO DISTRICT - BRITISH COLUMBIA

SCALE: 1" = 200'

NOTE: Bearings are astronomic, derived from the  
 South Boundary of the N.T.P. Highway, Plan H-449.

LEGEND: • OIP denotes an old iron pin found.  
 • IP denotes an iron pin placed on this survey.



I, RUSSELL N. SHORTT, of the City of Prince George, a British Columbia Land Surveyor make oath and say that I was present at and did personally superintend the survey represented by this plan and that the survey and plan are correct. The said survey was completed on the 24<sup>th</sup> day of May, 1967.

*[Signature]*  
 B. C. L. S.

Sworn before me this 25<sup>th</sup>  
 day of MAY, 1967

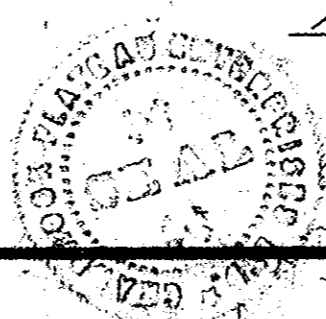
*[Signature]*  
 A Commissioner for taking Affidavits  
 within the Province of British Columbia.

ROCK ENTERPRISES LTD.

*[Signature]*  
 Director

*[Signature]*  
 Director

*[Signature]*  
 Director  
 Cariboo District  
 Enterprises Ltd.



*[Signature]*  
 January 17, 1968.  
 Approved under the Land Registry Act  
 this 8<sup>th</sup> day of November, 1967  
*[Signature]*  
 Approving Officer, Dept. of Highways.

W. D. USHER & ASSOCIATES  
 LAND SURVEYORS  
 PRINCE GEORGE - B. C.  
 AR 72 & 73 2052