

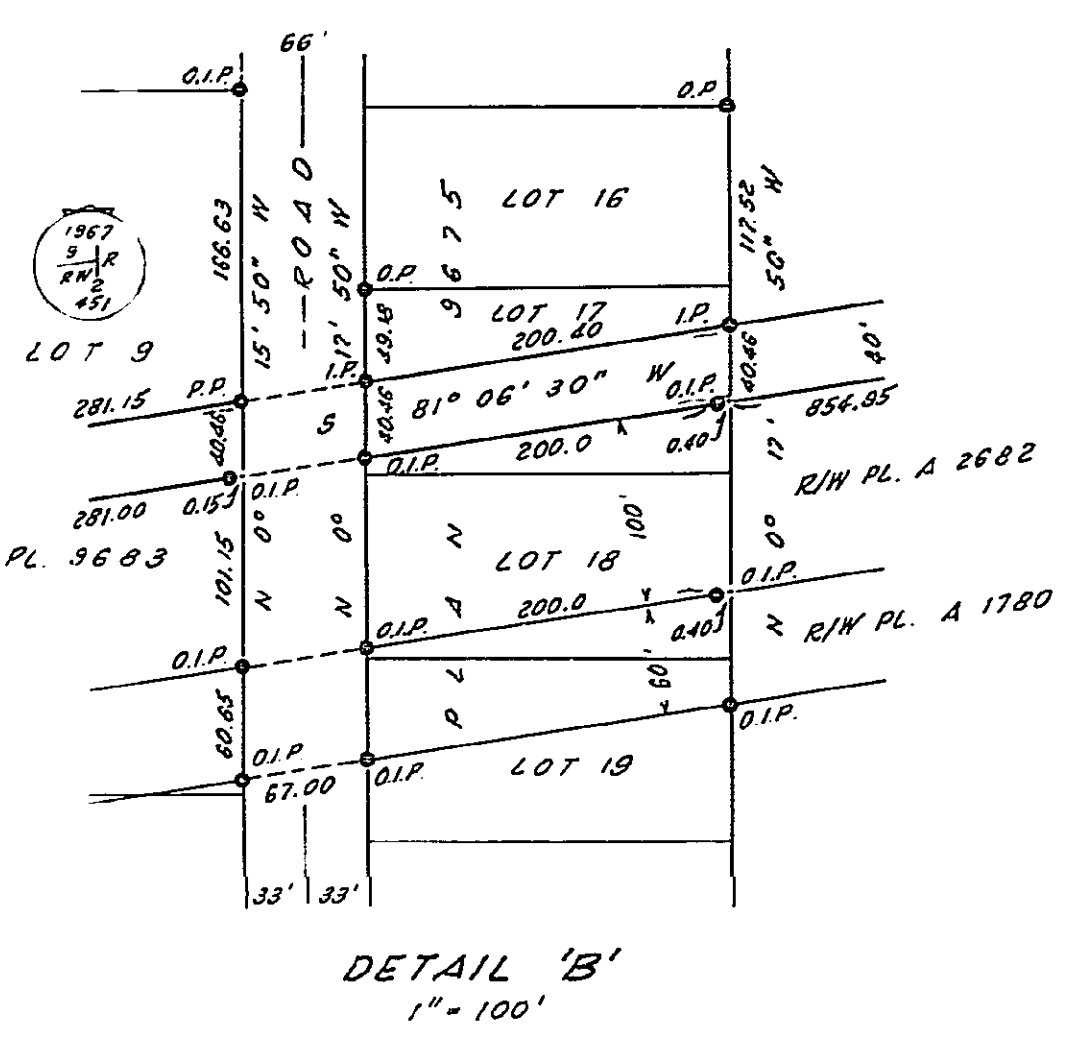
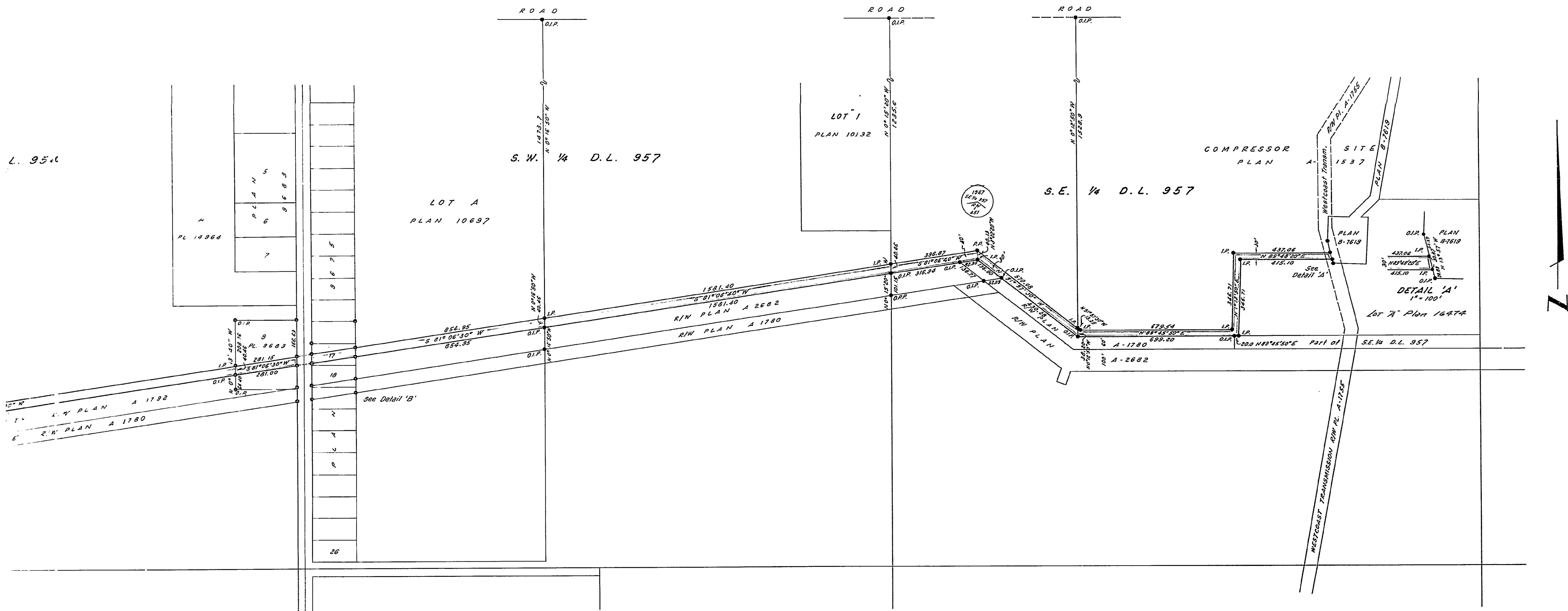
PLAN SHOWING SURVEY OF  
**OIL PIPE LINE RIGHT-OF-WAY**  
 THROUGH  
 DISTRICT LOTS 954, 957, 2155 & 2156  
**CARIBOO DISTRICT**  
 PROVINCE OF BRITISH COLUMBIA  
 SCALE 1 INCH = 200 FEET

**LEGEND**  
 I.P. denotes standard iron post set.  
 O.I.P. = Old Standard Iron Post found.  
 R.P. = Standard Pipe Post set.  
 O.R.P. = Old Standard Pipe Post found.  
 STRAPINGS ARE AERONAUTIC AND ARE TAKEN FROM THE  
 DATA SET OF THE INDIAN SURVEY CO. IN THE 26 & 27 S.E.  
 157 PLAN A 2682.

I, A.D. Hoshford of the City of Grande Prairie, British  
 Columbia Land Surveyor, make oath and say that I was present  
 and did personally superintend the survey represented by this  
 plan, and that the survey and plan are correct. The said survey  
 was completed on the 25th day of February, 1987 A.D.

Sworn before me at the City of Grande Prairie, British Columbia, this 25th day of February, 1987 A.D.  
 [Signature]  
 B.C.L.  
 A Notary Public For The Yukon Territory

BOOK OF REFERENCE			
ALIENATED LANDS			
DESCRIPTION OF PROPERTY	AREA		LENGTH OF R/W
	DISTRICT LOT	REQ'D	
PLAN A - 1537 S.E. 1/4	957	1.01	1468.04
S.E. 1/4 EXCEPT PL. A - 1537	957	0.76	966.42
S.W. 1/4 EXCEPT PLANS 10697 & 9675	957	1.45	1581.40
LOT 4, PL. 10697 S.W. 1/4	957	0.79	854.95
LOT 17, PL. 9675 S.W. 1/4	957	0.18	200.40
LOT 9, PL. 9683 S.E. 1/4	954	0.26	281.07
S.E. 1/4 EXCEPT PLANS 9683 & 9684	954	2.14	2352.10
LOT 2, PL. 2156	2156	1.88	2455.35
LOT 4, PL. 5588	2156	0.66	504.16

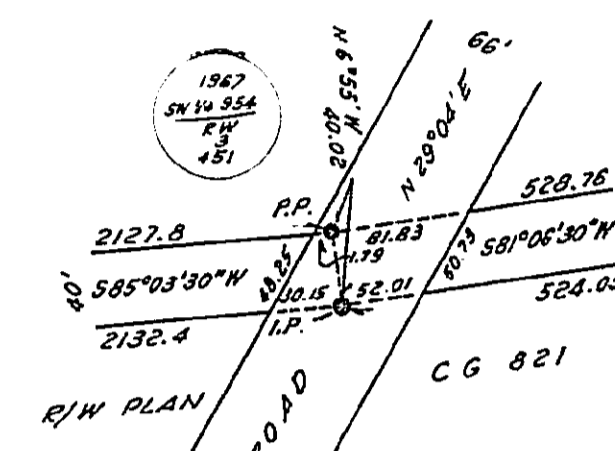


S.W. 1/4 D.L. 954

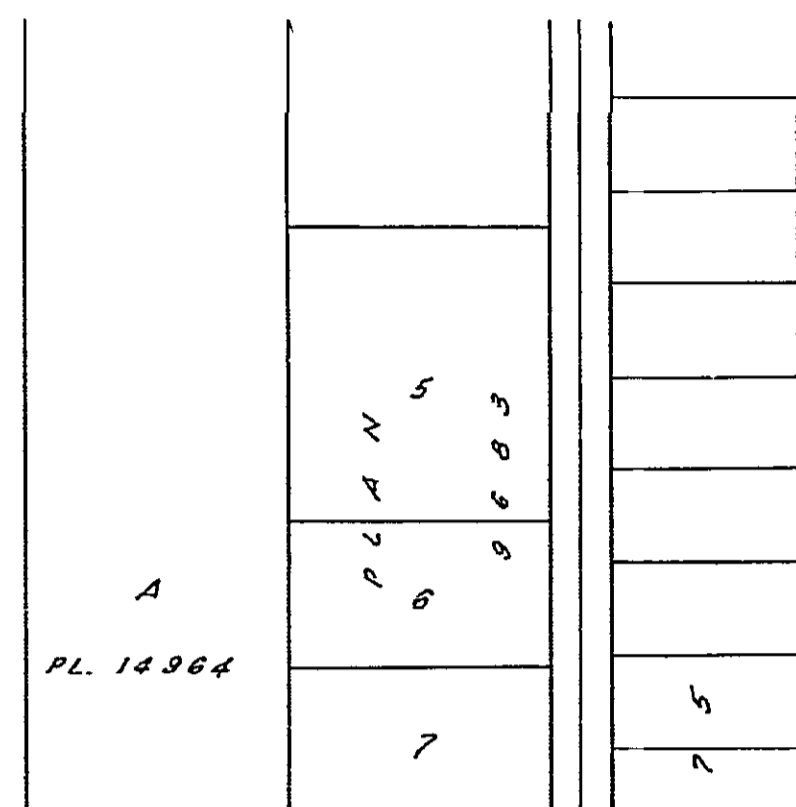
S.E. 1/4 D.L. 954  
Plan B1673

S.W. 1/4 D.L. 957

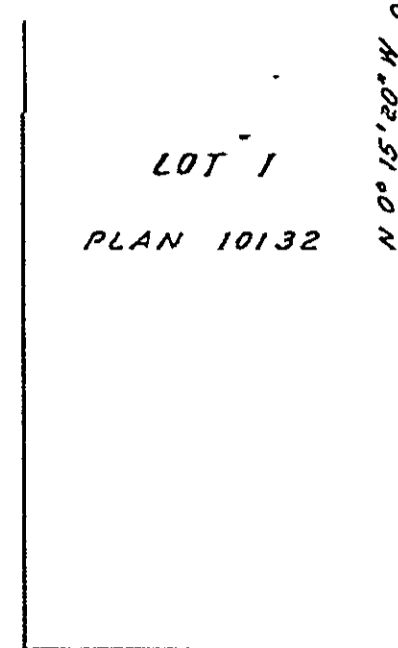
S.E. 1/4 D.L. 957



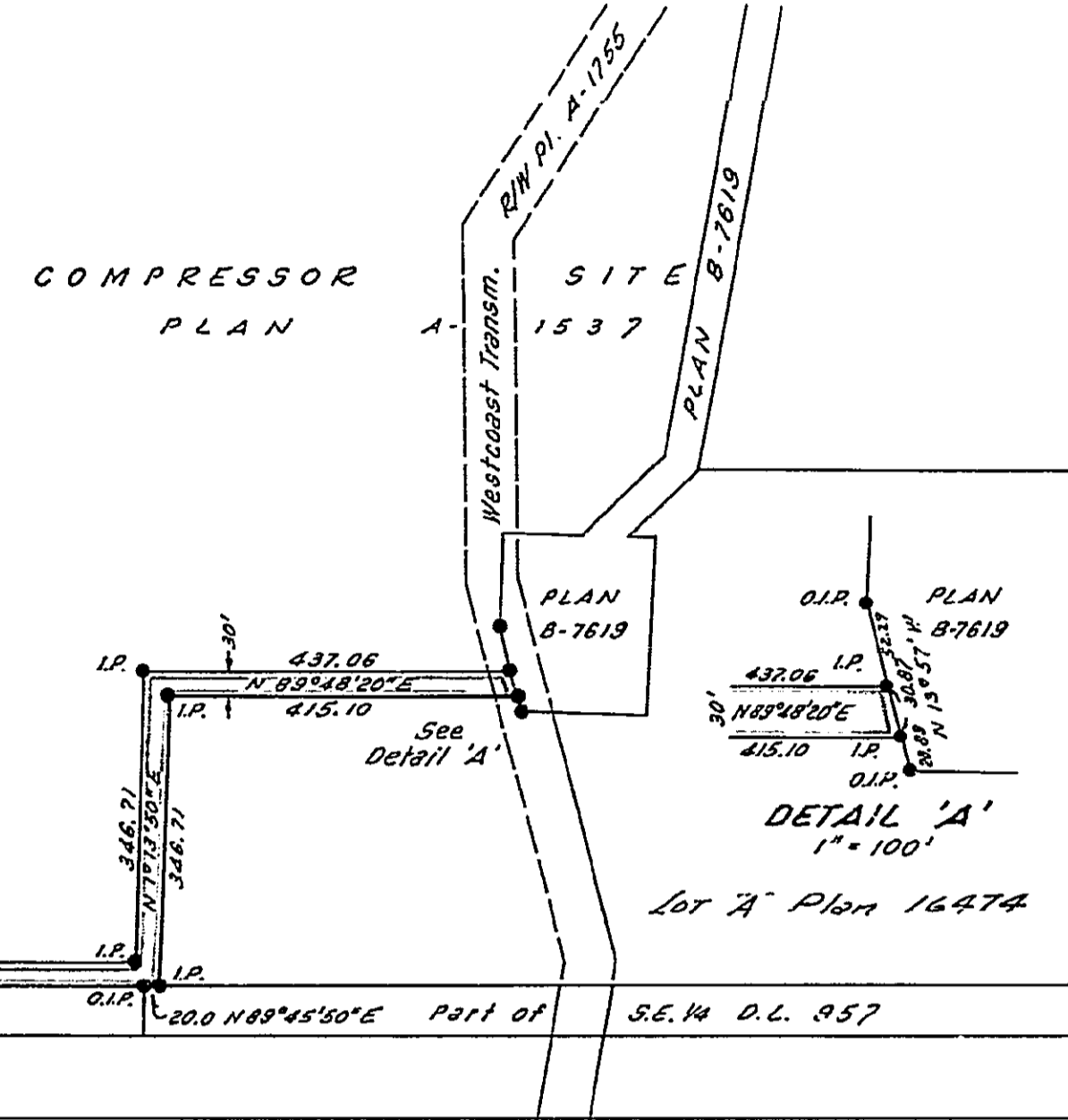
DETAIL 'C'  
Not to scale



LOT A  
PLAN 10697

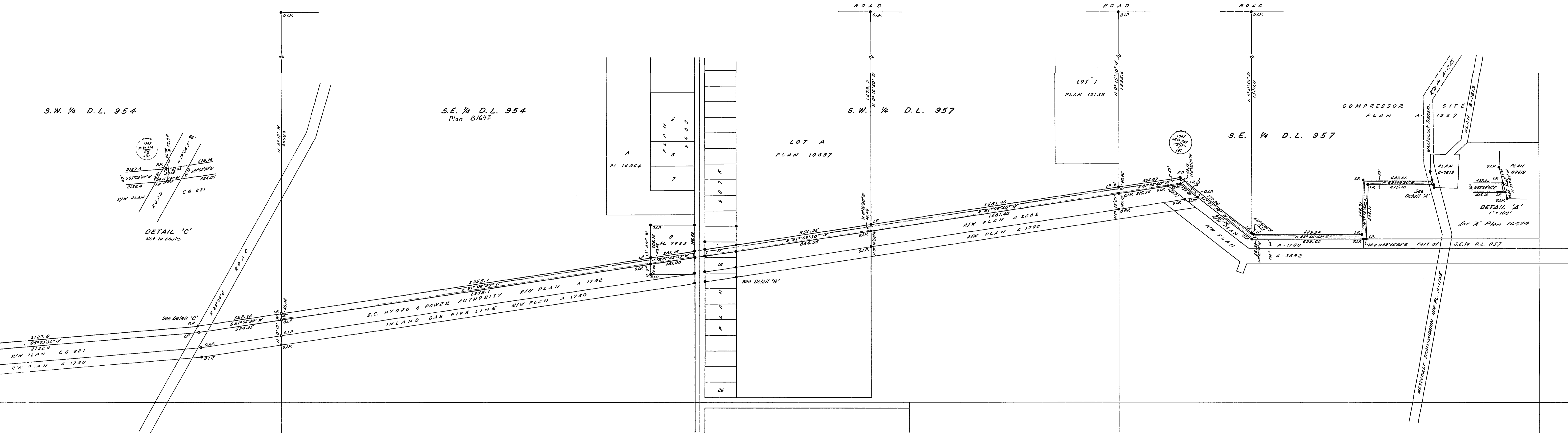


LOT 1  
PLAN 10132

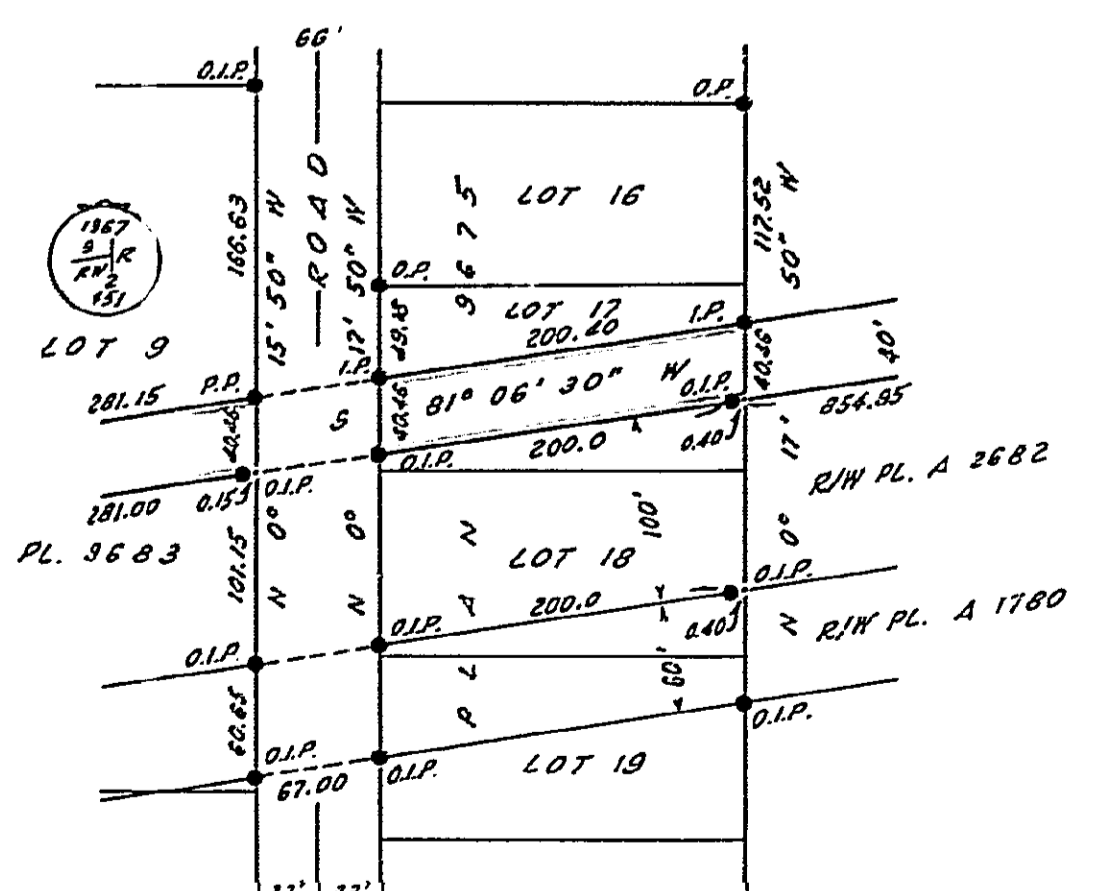


COMPRESSOR  
PLAN SITE  
1537

DETAIL 'A'  
1" = 100'



B.C. HYDRO & POWER AUTHORITY  
INLAND GAS PIPE LINE  
R/W PLAN A 1780  
R/W PLAN A 2682  
R/W PLAN A 1780



DETAIL 'B'  
1" = 100'

