

PLAN SHOWING SURVEY OF
 OIL PIPE LINE RIGHT-OF-WAY
 THROUGH
 DISTRICT LOTS S.W. 1/4 954, & 2155
 CARIBOO DISTRICT
 PROVINCE OF BRITISH COLUMBIA

SCALE 1 INCH = 200 FEET

LEGEND

- I.P. denotes Standard Iron Post set.
- O.I.P. " Old Standard Iron Post found.
- P.P. " Standard Pipe Post set.
- O.P.P. " Old Standard Pipe Post found.

Bearings are Astronomic and are derived from the North By of the Inland Natural Gas R/W in the SE 1/4 D.L. 957 Plan A 2682

I, A. D. Hosford of the City of Grande Prairie, British Columbia Land Surveyor, make oath and say that I was present at and did personally superintend the survey represented by this plan, and that the survey and plan are correct. The said survey was completed on the 21st day of Feb. 1967 A.D.

Sworn before me at the City of Whitehorse, Yukon, this 1st day of Feb. 1967 A.D.

John H. H. H.
 B.C.L.S.

W. J. J. J.
 A NOTARY PUBLIC FOR THE
 YUKON TERRITORY

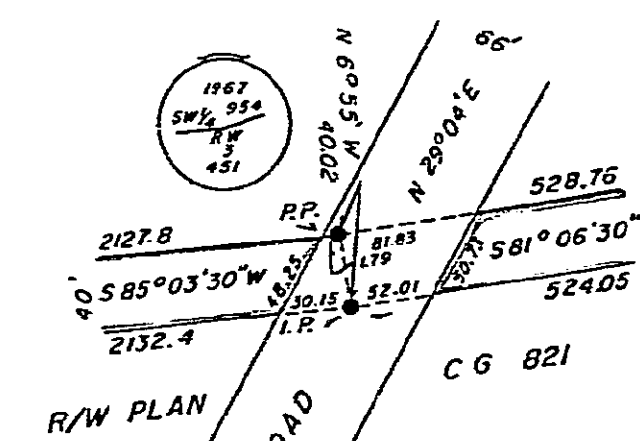
BOOK OF REFERENCE			
CROWN LANDS			
DESCRIPTION OF PROPERTY	AREA	LENGTH	OF E. OF R/W
	REQ'D ACRES	OF E. OF R/W	
	2155	209	2696.99
S.W. 1/4	954	236	2573.61

I hereby certify that this is a true copy of the Official Plan on deposit in the Department of Lands, Forests and Water Resources and numbered Plan 14 Tube 828.

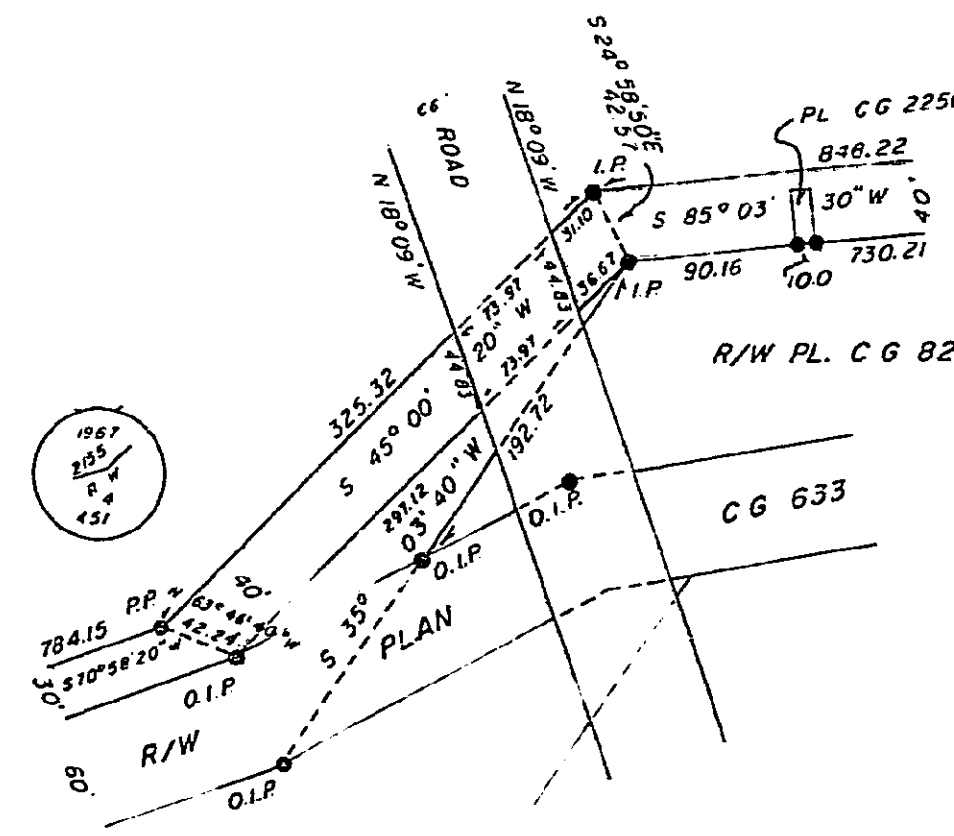


Surveyor General, Victoria, B.C.
 February 5, 1968.

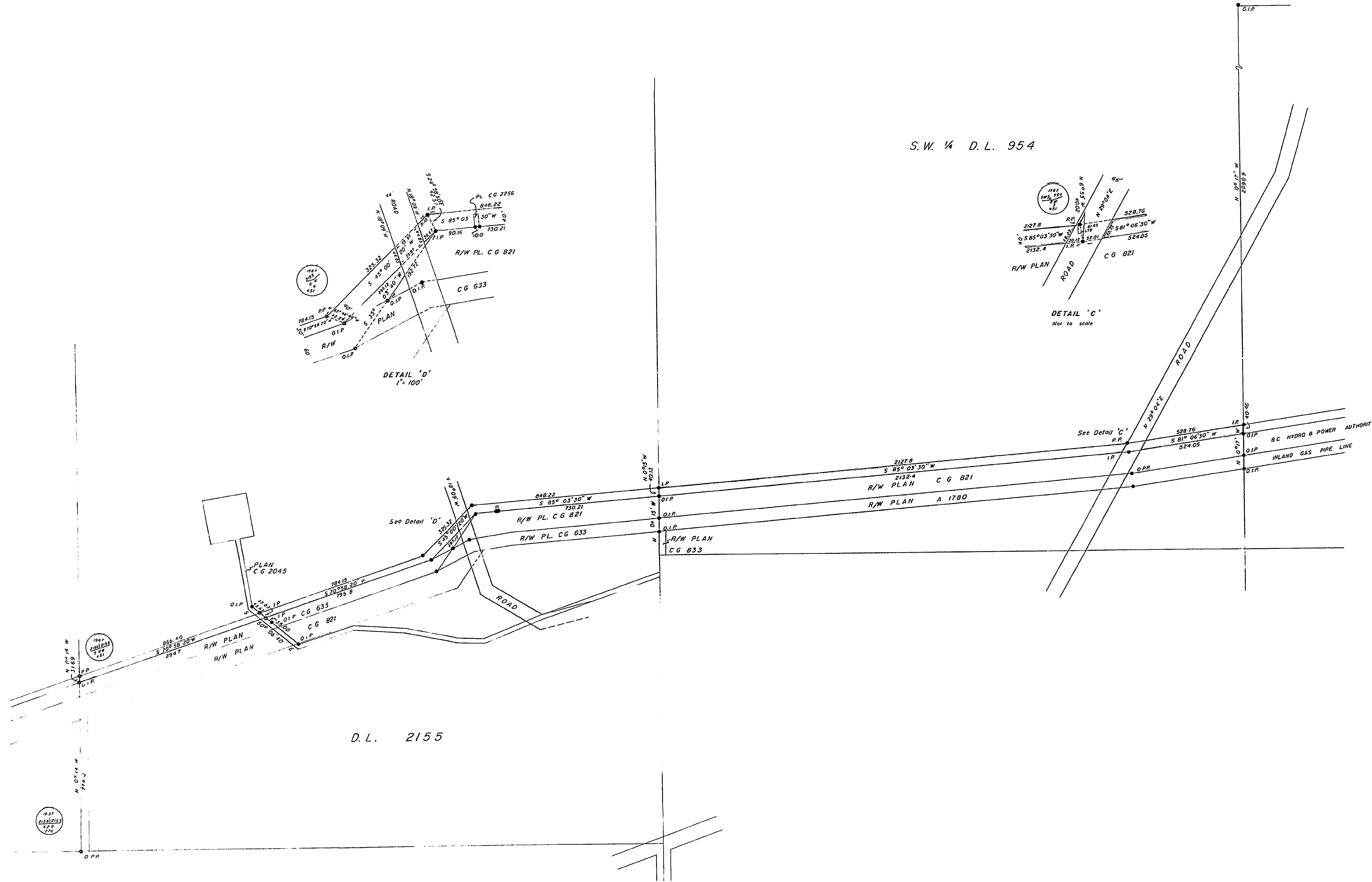
S.W. 1/4 D.L. 954



DETAIL 'C'
 Not to scale



DETAIL 'D'
 1" = 100'



D.L. 2155

1967
 2155
 236