

20

4550-500

034

Roll 21542

PLAN 837  
10887  
10887

PLAN No 17284

Deposited in the Land Registry Office at  
Prince George on the 22 day of JAN. 1968.

PLAN OF SUBDIVISION OF PART OF  
LOT 1, PLAN 8693, DISTRICT LOT 2607.  
CARIBOO DISTRICT

SCALE: 1" = 200'

T. W. CARLOW  
Registrar

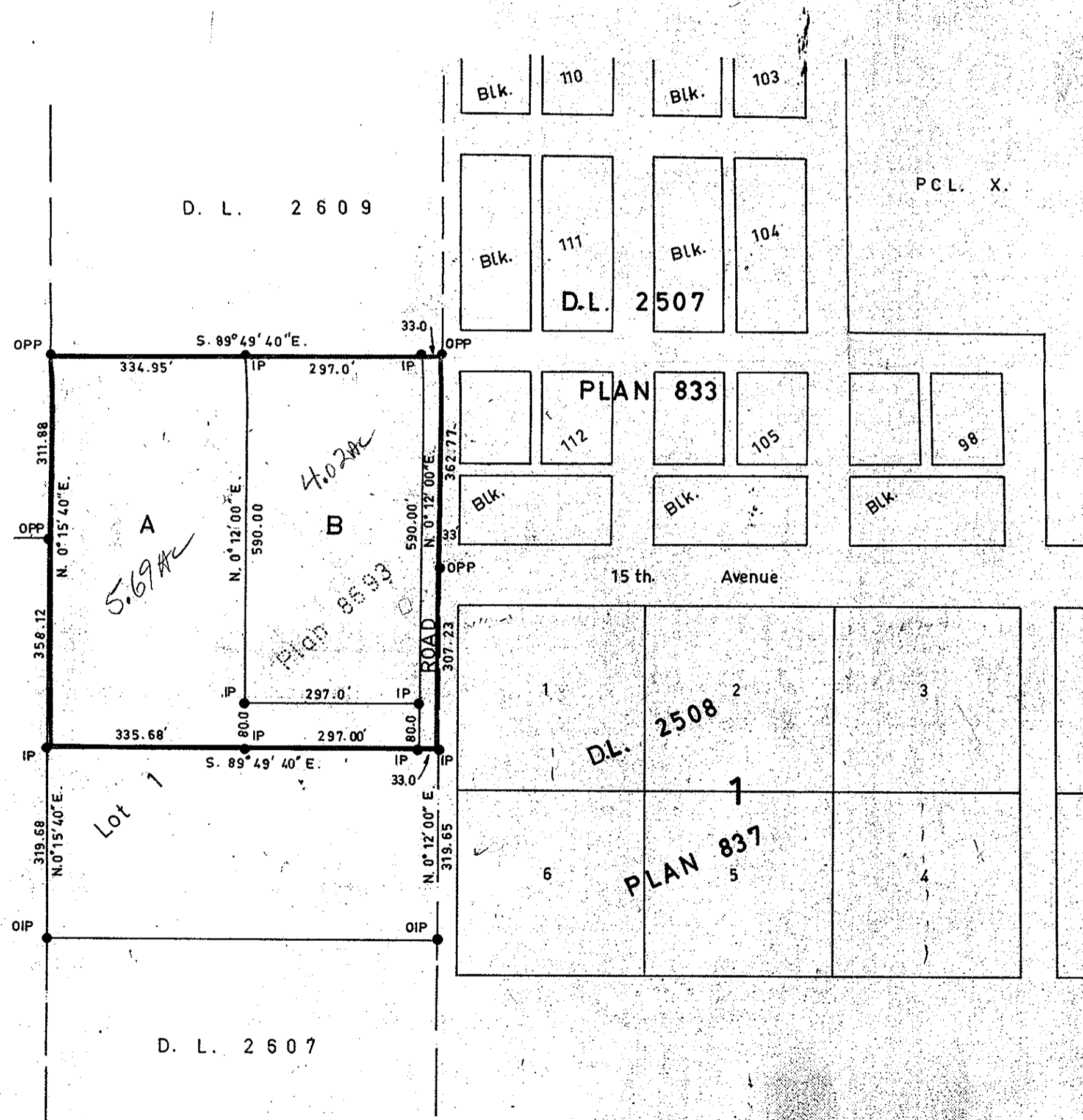
RECEIVED  
FEB 2 1968  
PROVINCIAL ASSESSOR  
PRINCE GEORGE, B. C.



D. L. 10225

D. L. 10226

Lot 1, 13412



Bearings are astronomic and are derived from  
OPRs on West bdy. D.L. 2507, shown  
as N. 0° 12' 00\" E. @ 362.77'

- P.con. ----- Standard Concrete Post.
- P.Rock ----- Standard Rock Post.
- P.P. ----- Standard Pipe Post.
- I.P. ----- Standard Iron Post.
- P. ----- Wooden Post.
- L.P. ----- Lead Plug.
- ----- Denoting "Old"
- WT. ----- Denoting "Witness"

I, A. DANILUCK... of the City of Prince George...  
British Columbia Land Surveyor, make oath and  
say that I was present at and did personally  
superintend the survey represented by this  
plan and that the survey and plan are correct.

The said survey was completed on  
the 23rd day of November, 1966.

*A. Daniluck*

Sworn before me at Prince George, B.C.  
this 22 day of December, 1966.

*W. G. Whyte*  
A commissioner for taking affidavits  
within British Columbia.

Owner *Eva Tomson*

Witness *R. Miller*

Approved under the Land Registry Act  
on the 12th day of January, 1968

*W. G. Whyte*  
Approving Officer  
Dept. of Highways