

PLOTTED JN

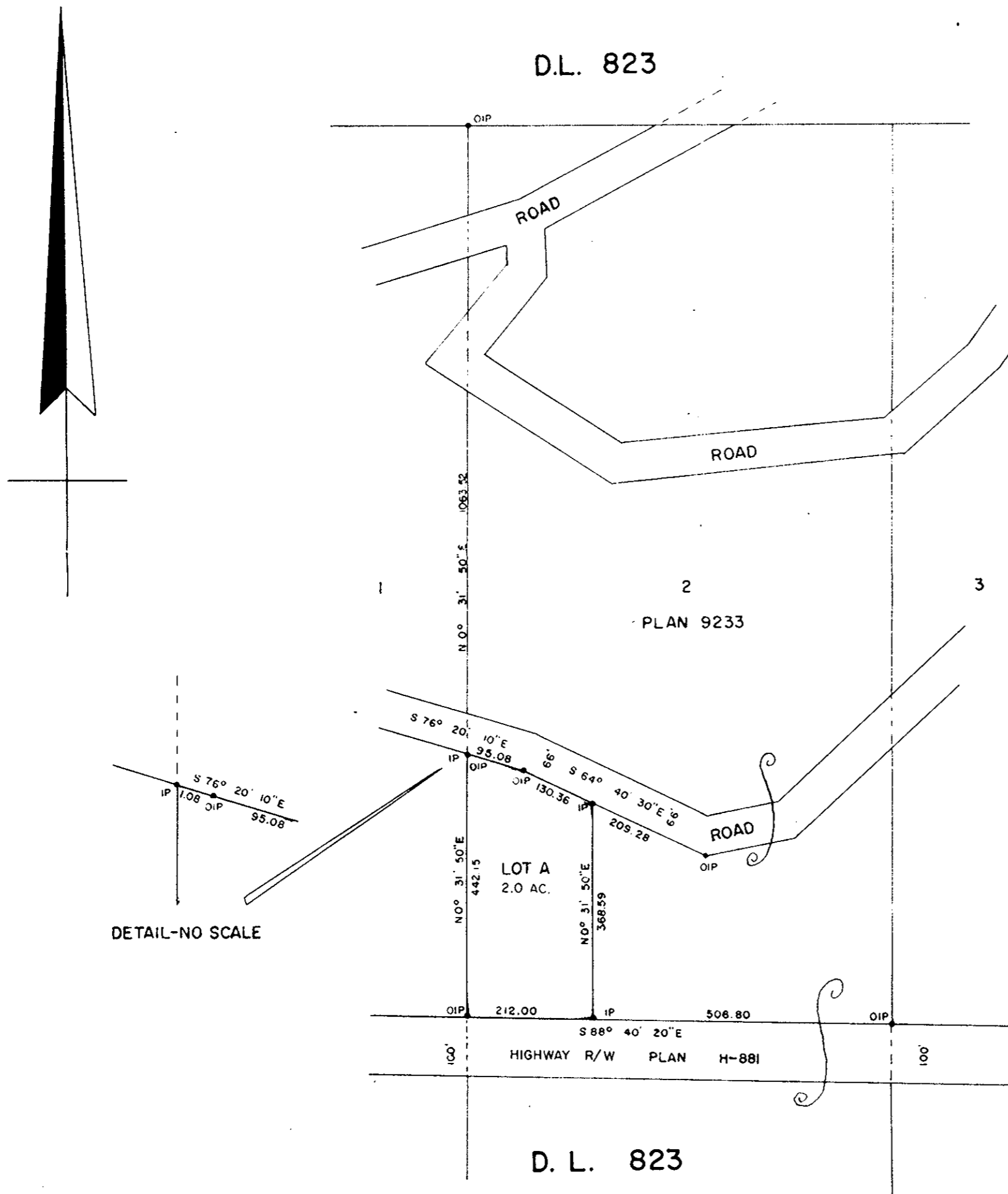
PLAN N<sup>o</sup> 17275  
Deposited in the Land Registry  
Office at Prince George, B.C. this  
18<sup>th</sup> day of JANUARY, 1968.

Registrar *[Signature]*

PLAN OF SUBDIVISION OF PART OF  
LOT 2, PLAN 9233  
DISTRICT LOT 823  
CARIBOO DISTRICT - BRITISH COLUMBIA  
SCALE: 1" = 200'

NOTE: Bearings are astronomic, derived from the  
North boundary of Highway R/W PLAN H-881

LEGEND: • OIP Denotes an old iron pin found  
• IP Denotes an iron pin placed on this survey



I, RUSSELL N. SHORTT, of the City of Prince George, a British Columbia Land Surveyor make oath and say that I was present at and did personally superintend the survey represented by this plan and that the survey and plan are correct. The said survey was completed on the 17<sup>th</sup> day of November, 1967.

*[Signature]*  
B. C. L. S.

Sworn before me this 15<sup>th</sup>  
day of JANUARY, 1968.

A Commissioner for taking Affidavits  
within the Province of British Columbia

Owner

Witness

Approved under the Land Registry Act  
this 8<sup>th</sup> day of January, 1968

*[Signature]*  
Approving Officer, Dept. of Highways.

W. D. USHER & ASSOCIATES  
LAND SURVEYORS  
PRINCE GEORGE - B. C.  
AK63-64 2319