

PLAN OF EASEMENT
THROUGH LOT 1
PLAN 14909, D.L. 4038
CARIBOO DISTRICT

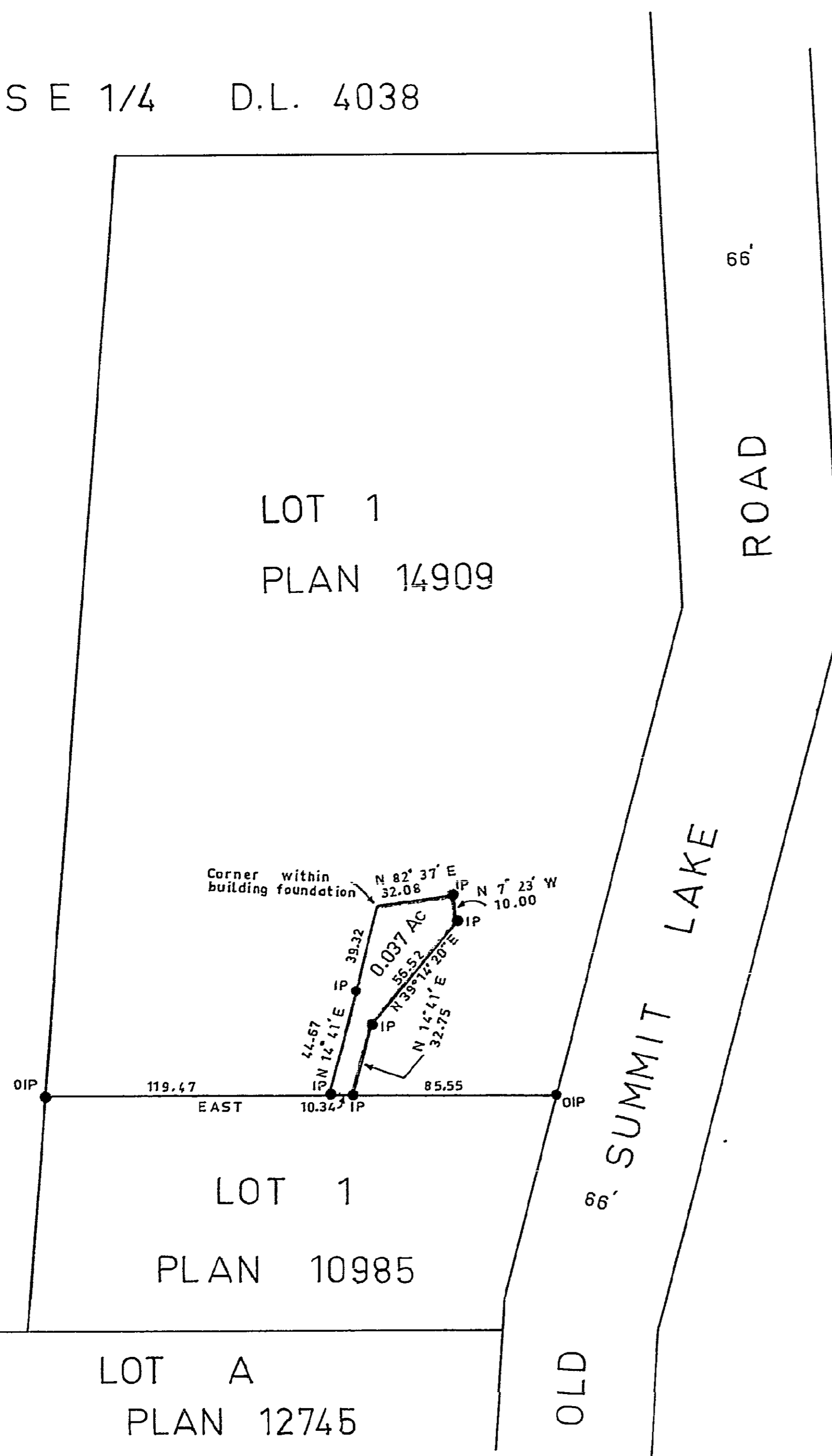
PLAN N^o 17265

Deposited in the Land Registry Office
at PRINCE GEORGE on the 15th day of JANUARY, 1967.

[Signature]
Registrar.

SCALE: 1" = 50'

S E 1/4 D.L. 4038



Bearings are astronomic and are derived from
OIPs on the South Boundary of Lot 1,
Plan 14909 as EAST

- P.con. Standard Concrete Post.
- P.Rock Standard Rock Post.
- P.P. Standard Pipe Post.
- I.P. Standard Iron Post.
- P. Wooden Post.
- L.P. Lead Plug.
- O. Denoting "Old"
- WT. Denoting "Witness."

I, R.J. GOBLE of the City of Prince George,
British Columbia Land Surveyor, make oath and
say that I was present at and did personally
superintend the survey represented by this
plan and that the survey and plan are correct.
The said survey was completed on
the 17th day of NOVEMBER, 1967.

Sworn before me at Prince George,
this 24th day of Nov., 1967.

[Signature]
A Commissioner for taking affidavits
within British Columbia.

Owner *[Signature]*
Witness *[Signature]*

BOOK OF REFERENCE		
R/W TAKEN FROM	Q DIST.	AREA
LOT 1, PLAN 14909, D-L. 4038		0.037 Ac.