

FC. ~~GB.~~  
FB. GB. ~~BASE MAP.~~

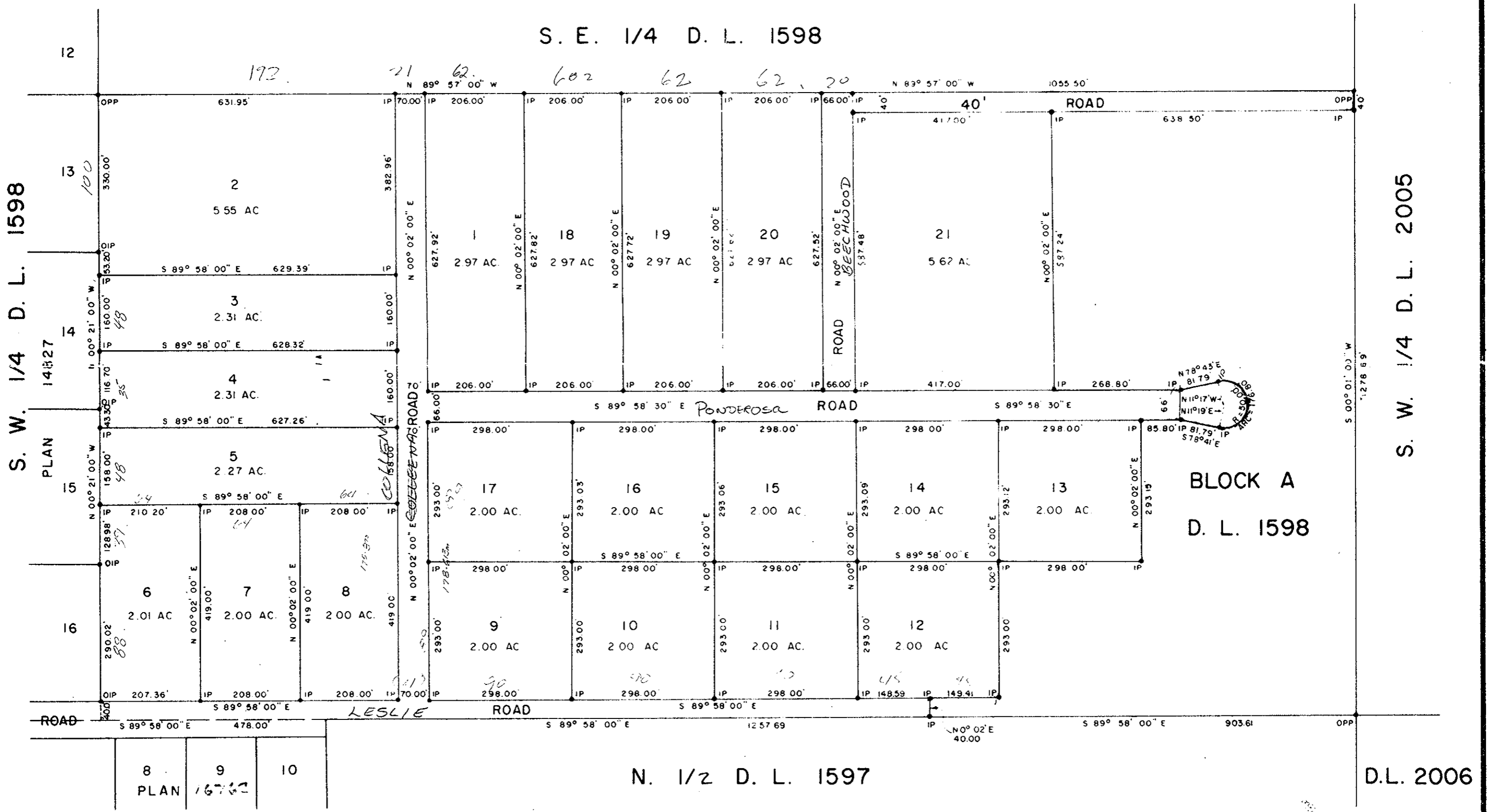
PLAN OF SUBDIVISION OF PART OF  
**BLOCK A, DISTRICT LOT 1598**  
CARIBOO DISTRICT - BRITISH COLUMBIA  
SCALE: 1" = 200'

PLAN No. **17261**  
Deposited in the Land Registry  
Office at Prince George, B.C. this  
22<sup>nd</sup> day of **JANUARY**, 1967.

NOTE: Bearings are astronomic, derived from the  
south boundary of Block A, D.L. 1598.

*[Signature]*  
Registrar

LEGEND: ● OPP denotes an old pipe post found.  
● OIP denotes an old iron pin found.  
● IP denotes an iron pin placed on this survey.



I, DONALD A. DUFFY, of the City of Prince George,  
a British Columbia Land Surveyor make oath and say  
that I was present at and did personally superintend  
the survey represented by this plan and that the survey  
and plan are correct. The said survey was completed  
on the 15th day of September, 1967.

*[Signature]*  
B. C. L. S.

Sworn before me this 21<sup>st</sup>  
day of **NOVEMBER**, 1967.

*[Signature]*  
A Commissioner for taking Affidavits  
within the Province of British Columbia

*[Signature]*  
Owner

Witness

Approved under the Land Registry Act  
this 13<sup>th</sup> day of **November**, 1967.

*[Signature]*  
Approving Officer, Dept. of Highways.

