

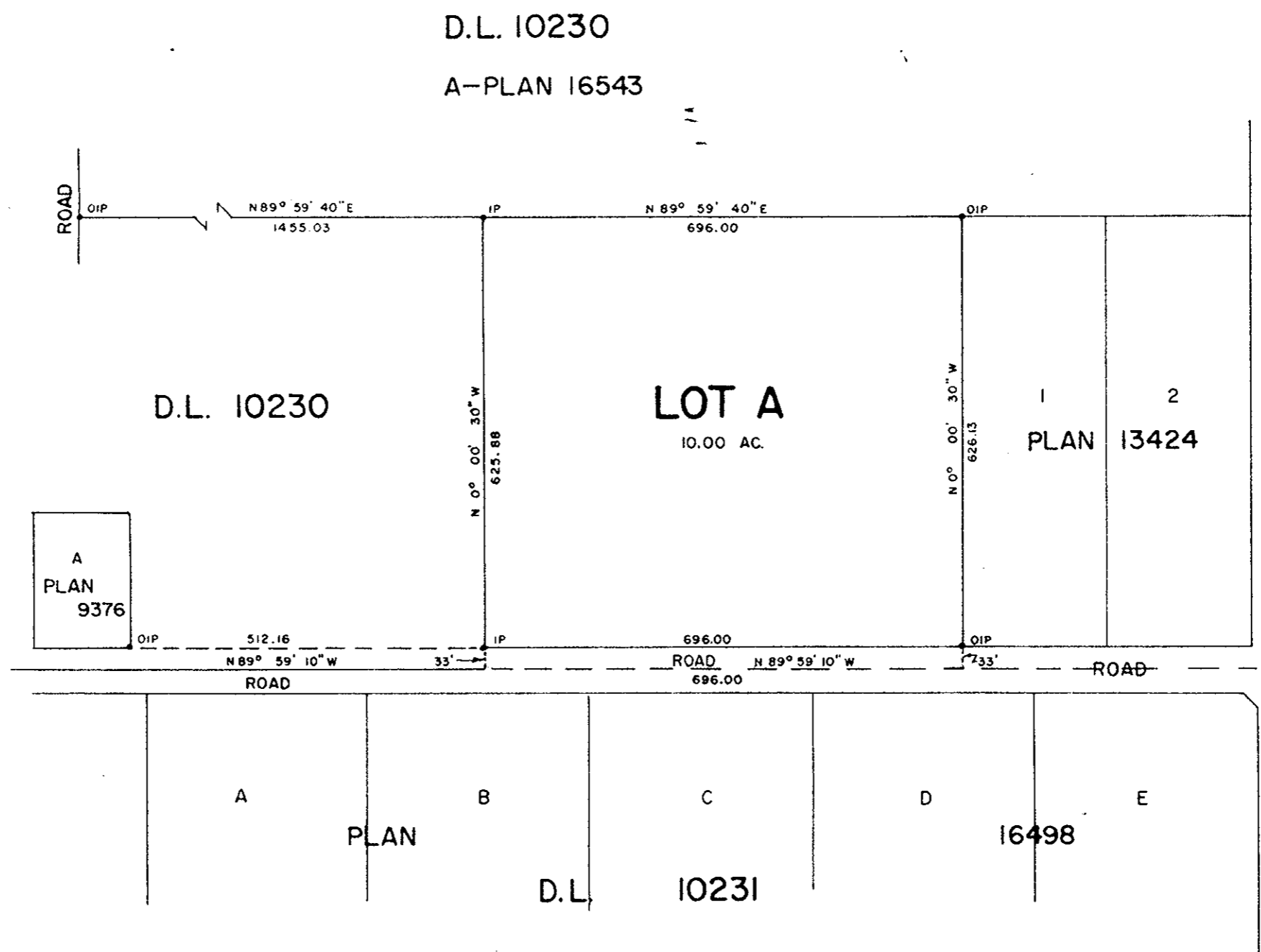
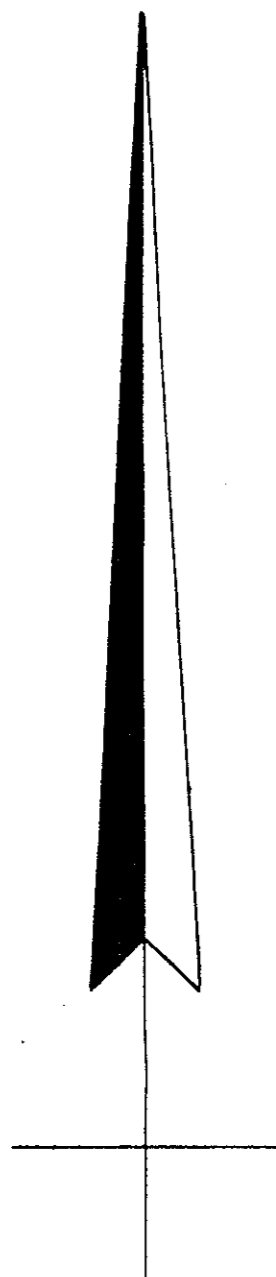
PLAN N^o 17249
 Deposited in the Land Registry
 Office at Prince George, B.C. this
 8th day of JANUARY 1968

[Signature]
 Registrar

PLAN OF SUBDIVISION OF PART OF
DISTRICT LOT 10230
 EXCEPT PLANS 9376, 13424, & 16543
 CARIBOO DISTRICT - BRITISH COLUMBIA
 SCALE: 1" = 200'

NOTE: Bearings are astronomic, derived from
 the South boundary of Lot A, Plan 16543.

- LEGEND:
- OIP Denotes an old iron pin found
 - IP Denotes an iron pin placed on this survey



I, DONALD A. DUFFY, of the City of Prince George,
 a British Columbia Land Surveyor make oath and say
 that I was present at and did personally superintend
 the survey represented by this plan and that the survey
 and plan are correct. The said survey was completed
 on the 6th day of December, 1967.

[Signature]
 B.C.L.S.

[Signature]
 Owner

[Signature]
 Witness

Approved under the Land Registry Act
 this 4th day of January 1968.

[Signature]
 Approving Officer, Dept. of Highways

Sworn before me this
 day of December, 1967.

[Signature]
 A Commissioner for taking Affidavits
 within the Province of British Columbia.