

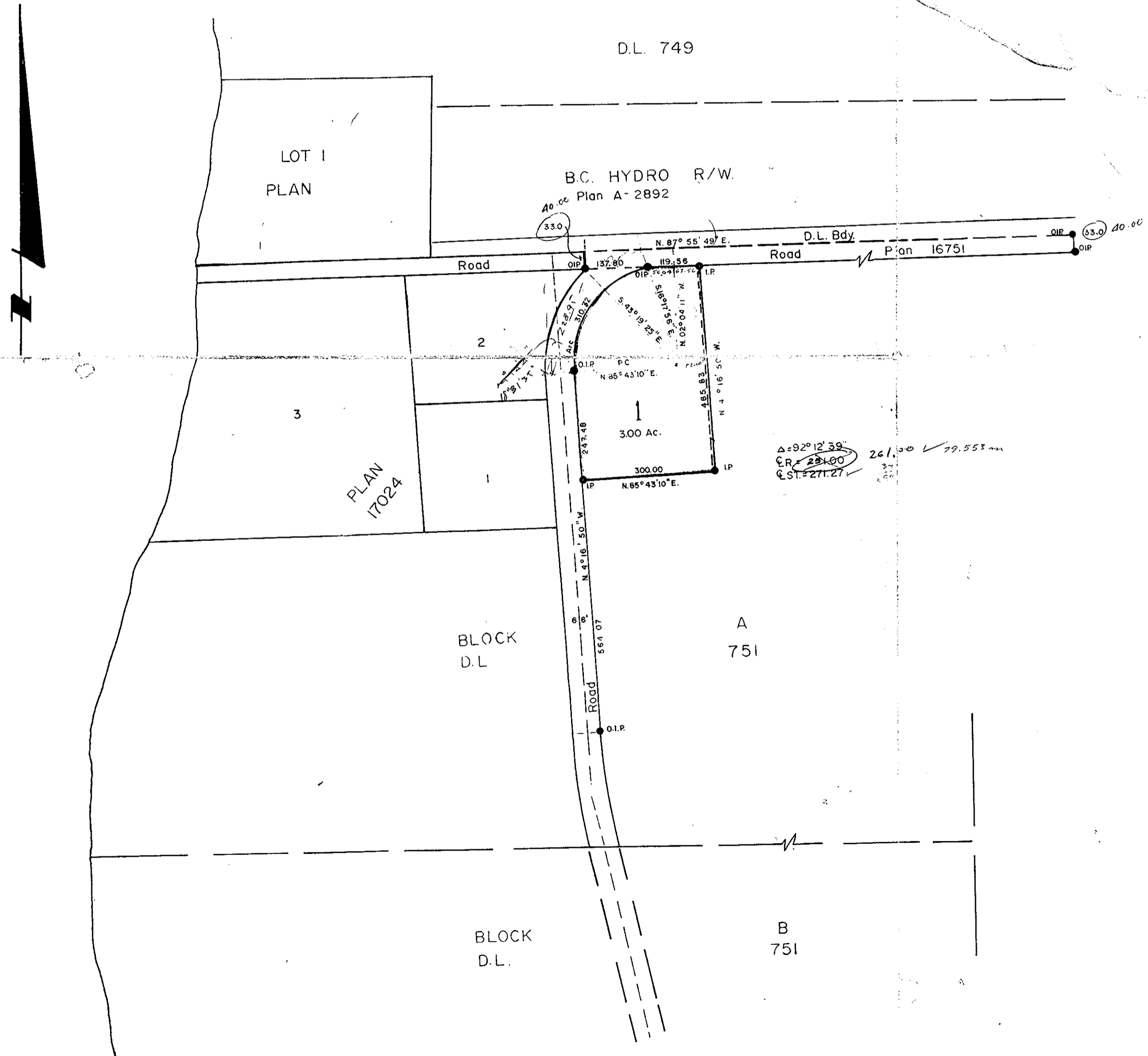
PLAN No 17229

Deposited in the Land Registry Office
at Prince George on the 19th day of Dec. 1967.

Registrar

PLAN OF SUBDIVISION OF PART
OF BLOCK A DISTRICT LOT 751
EXCEPT PLAN 17024 AND PLAN 16751,
CARIBOO DISTRICT.

SCALE: 1" = 200'



Bearings are astronomic and are derived from
OIPs on the E. Bdy. of road shown as
N. 4° 16' 50\" W. on Plan 17024.

- ⊙ P.con. Standard Concrete Post.
- ⊙ P.Rock Standard Rock Post.
- P.P. Standard Pipe Post.
- I.P. Standard Iron Post.
- P. Wooden Post.
- L.P. Lead Plug.
- O. Denoting "Old"
- WT. Denoting "Witness"

Approved under the Land Registry Act
on the 12th day of December 1967.

[Signature]
Approving Officer
Dept. of Highways.

I, R.J. Goble, of the City of Prince George,
British Columbia Land Surveyor, make oath and
say that I was present at and did personally
superintend the survey represented by this
plan and that the survey and plan are correct.

The said survey was completed on
the 18th day of October 1967.

Sworn before me at Prince George
this 30th day of Oct. 1967.

[Signature]
Commissioner for taking affidavits
for British Columbia.

Owner DANSON ASSOCIATES LTD.
per *[Signature]*

Witness
WILLIAMS DEVELOPMENT LTD
PER *[Signature]*
President

[Signature]
EASTERN DEVELOPMENT LTD.
President

REF. NO. 67317
McWilliam - Whyte - Goble & Associates, B.C. Land Surveyors
Prince George, B.C.