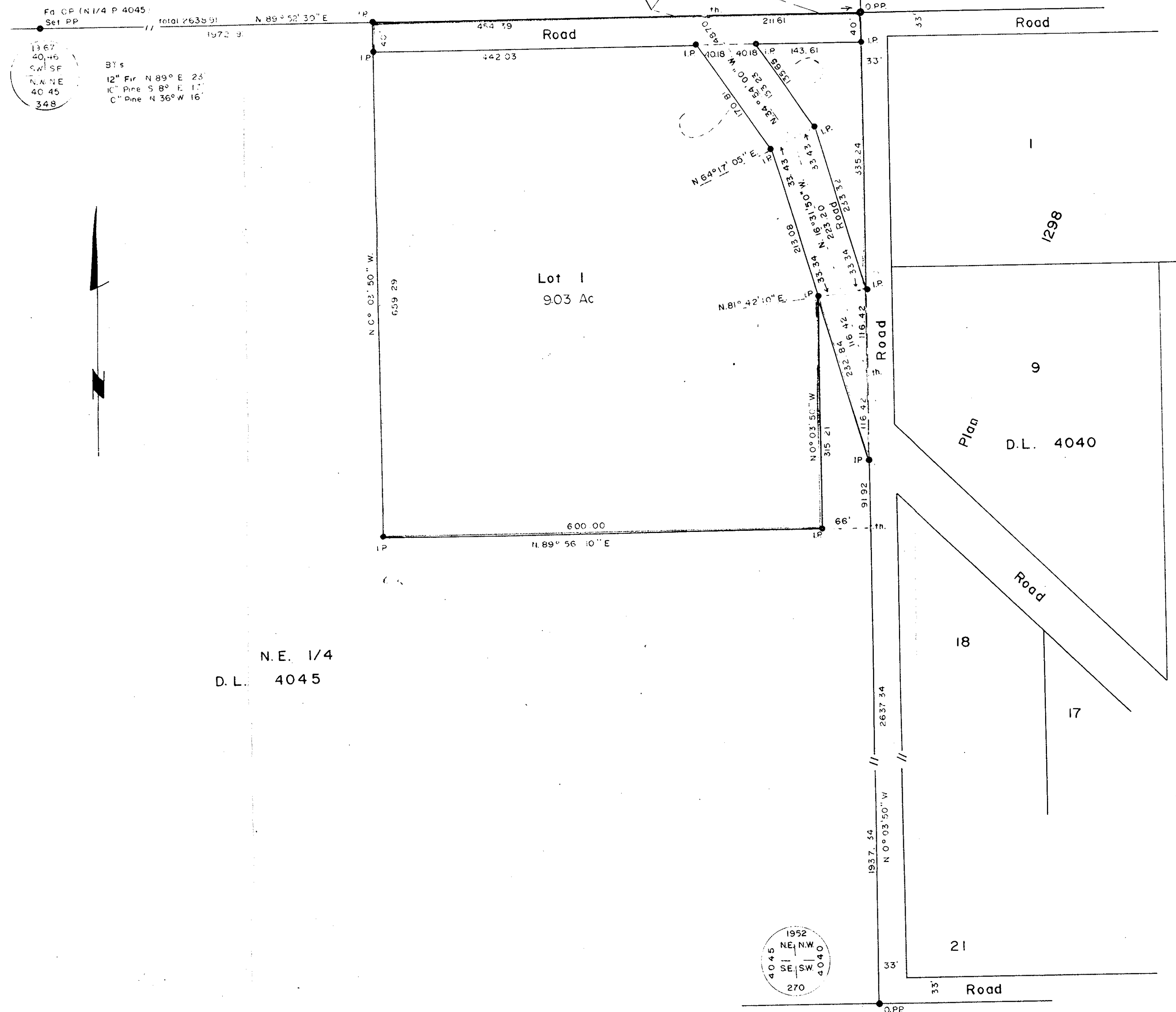


Plan of Subdivision  
of Part of N.E. 1/4 D.L. 4045,  
Cariboo District.  
SCALE: 1" = 100'

PLAN No 17175  
Deposited in the Land Registry Office of  
Prince George on the 17. day of Nov. 1967.  
*[Signature]*  
Registrar

S.E. 1/4  
D.L. 4046

Pct. A  
Plan B 6366  
D.L. 4039



13.67  
40.45  
S.W. SE  
N.N. NE  
40.45  
348

BT's  
12" Pin N 89° E 25'  
1" Pin S 8° E 11'  
1" Pin N 36° W 16'

Bearings are astronomic and are derived from West Bdy. D.L. 4039, shown as N.0°04'20" W on Plan 1599L.

- IP.....Standard Iron Post
- OPP.....Pipe Post found
- OIP.....Iron Post found
- PP.....Pipe Post set

I, *[Signature]* of the City of Prince George, British Columbia Land Surveyor, make oath and say that I was present at and did personally superintend the survey represented by this plan and that the survey and plan are correct.  
The said survey was completed on the 17th day of October, 1967.

Approved under the Land Registry Act on the 2<sup>nd</sup> day of November, 1967.

*[Signature]*  
Approving Officer

*[Signature]*  
B.C.L.S.

Sworn before me at Prince George this 17. day of September, 1967.

*[Signature]*  
Commissioner for taking affidavits for British Columbia.

Owner *[Signature]*  
Witness *[Signature]*

McWilliam, Whyte, Goble & Associates,  
B.C. Land Surveyors,  
Prince George, B.C.

REF. NO. 67270