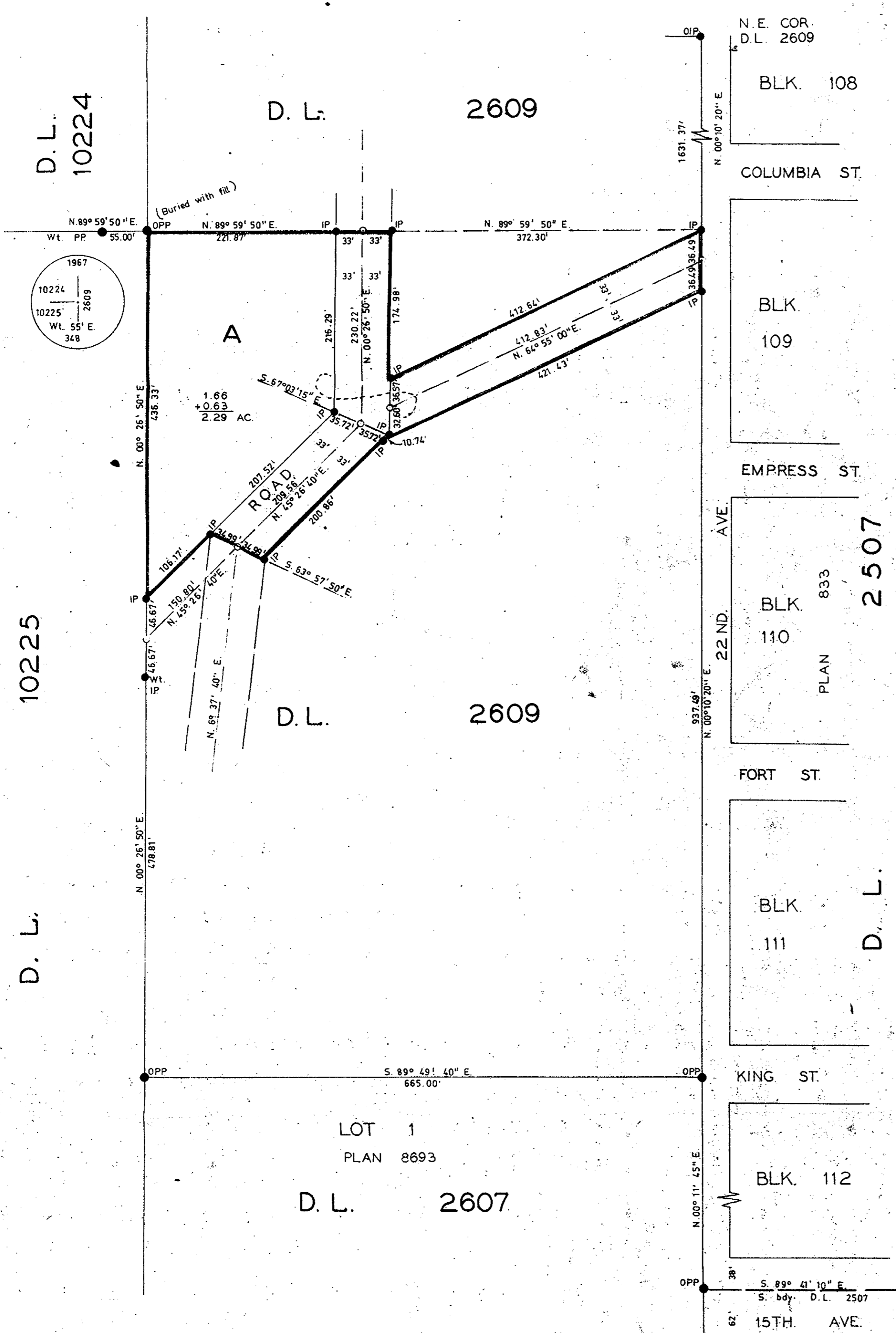


PLAN OF SUBDIVISION
OF PART OF DISTRICT LOT 2609.
CARIBOO DISTRICT.
SCALE: 1"=100'

PLAN NO. 17153

Deposited in the Land Registry Office at
Prince George this 2 day
of Nov 1967

[Signature]
Registrar



Bearings are astronomic and were derived from South boundary of D.L. 2507 shown as S. 89° 41' 10" E. on Plan 15227.

- PP ----- Pipe post set.
- OPP ----- Pipe post found.
- IP ----- Iron post set.
- OIP ----- Iron post found.

Approved under the Land Registry Act on the 13 day of September 1967
[Signature]
Approving Officer
Dept. of Highways

I, V. Bartel, of the City of Prince George, British Columbia Land Surveyor, make oath and say that I was present at and did personally superintend the survey represented by this plan and that the survey and plan are correct.

The said survey was completed on the 28th day of August 1967.
[Signature]
V. Bartel, B.C.L.S.

Sworn before me at Prince George this 5 day of September 1967.

[Signature]
Commissioner for taking affidavits for British Columbia.

[Signature]
Owner.
[Signature]
Witness
as to both signatures

McWilliam, Whyte, Goble, & Associates,
B.C. Land Surveyors,
Prince George, Kamloops.
REF NO. 67100-14