

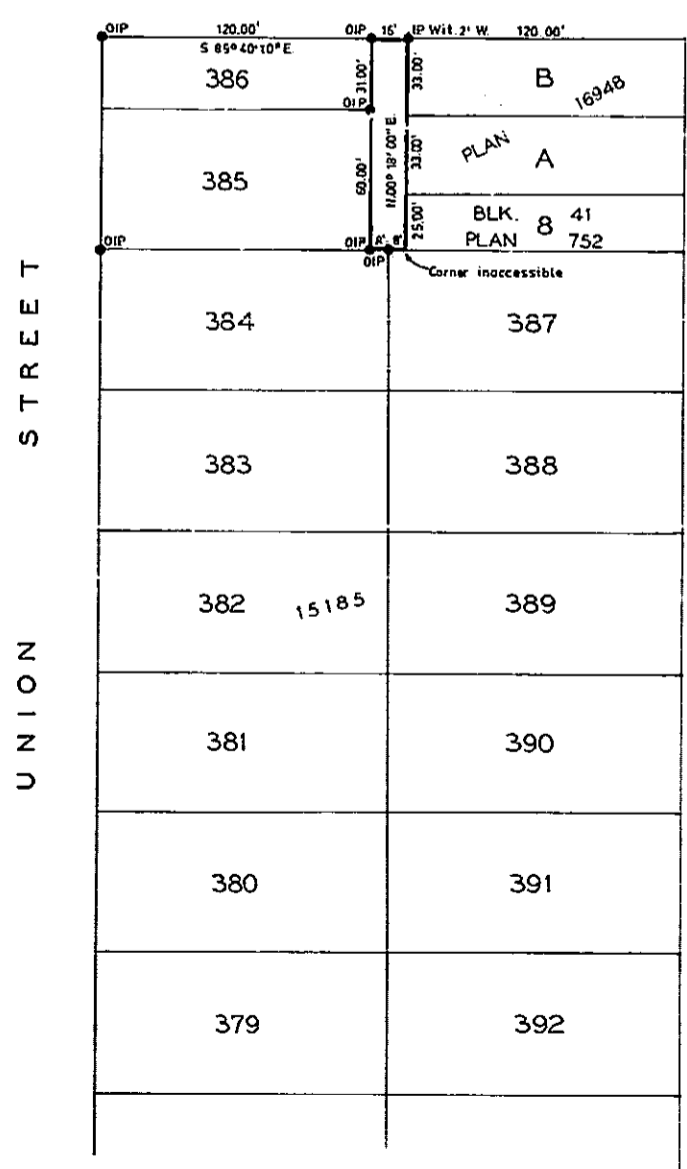
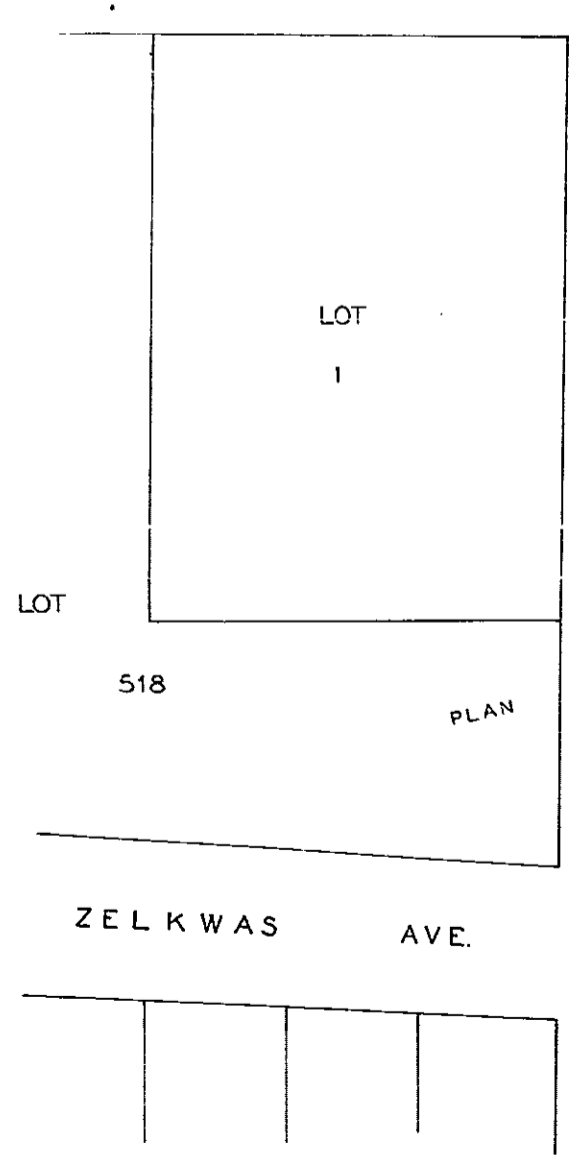
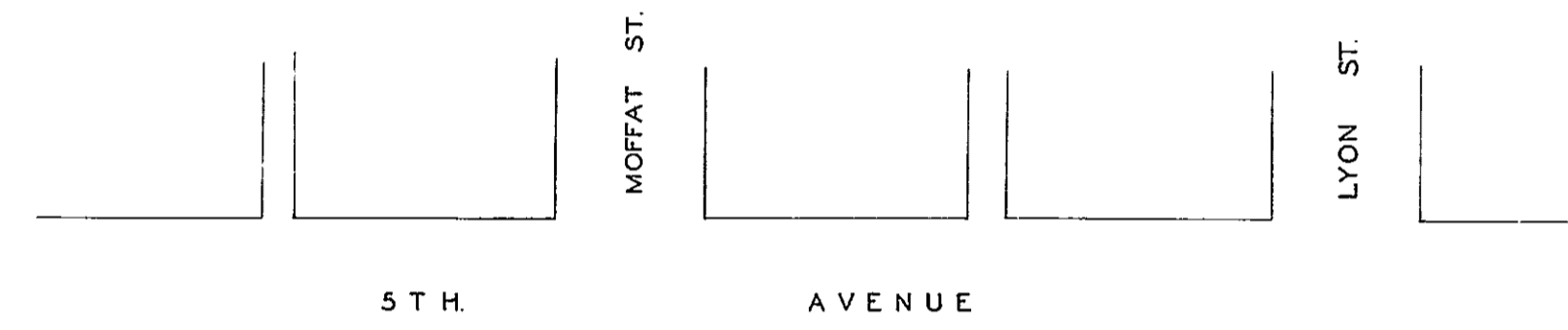
PLAN TO ACCOMPANY BY LAW 1982.

CITY OF PRINCE GEORGE,
 CLOSING LANE ADJACENT TO LOTS 385 AND 386, PLAN 15185,
 LOT 8, BLOCK 41, PLAN 752, AND LOTS A AND B, PLAN 16948.
 DISTRICT LOT 937,
 CARIBOO DISTRICT.
 SCALE: 1"=50'

PLAN NO. 17150

Deposited in the Land Registry Office at
 Prince George this 21st day
 of Oct. 1967.

[Signature]
 Registrar



LEGEND
 ●IP-----Iron post set.
 ○IP-----Iron post found.

Certified correct this 2nd day
 of October 1967

Victor Bailes
 V. Bailes B.C.L.S.

McWilliam, Whyte, Goble, & Associates.
 B.C. Land Surveyors.
 Prince George, Kamloops
 REF. NO. 67100-23

