

PLAN OF SUB-DIVISION OF PART OF
THE S. 1/2 OF DISTRICT LOT 749.
CARIBOO DISTRICT.

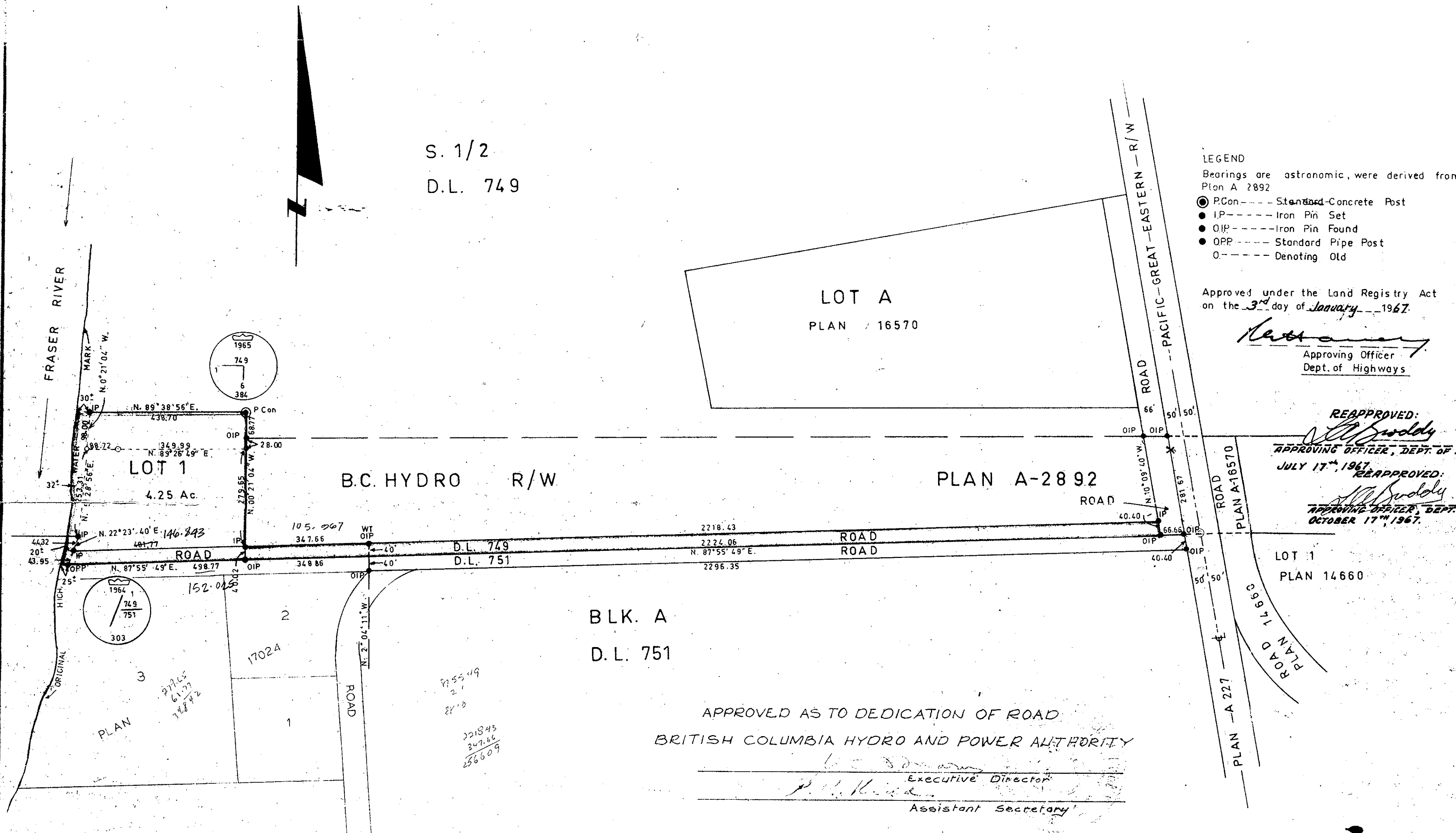
SCALE: 1" = 200'

Plan No. 17144

Deposited in the Land Registry Office at
Prince George, on the 27 day of Oct. 1967

[Signature]
Registrar

S. 1/2
D.L. 749



- LEGEND
Bearings are astronomic, were derived from
Plan A 2892
- PCon-----Standard-Concrete Post
 - IP-----Iron Pin Set
 - OIP-----Iron Pin Found
 - OPP-----Standard Pipe Post
 - Denoting Old

Approved under the Land Registry Act
on the 3rd day of January 1967.

[Signature]
Approving Officer
Dept. of Highways

PACIFIC GREAT EASTERN RAILWAY COMPANY

[Signature]
Executive Vice President
[Signature]
Secretary

Approved by

[Signature]
Chief Engineer

REAPPROVED:
[Signature]
APPROVING OFFICER, DEPT. OF HWYS.
JULY 17th 1967
REAPPROVED:
[Signature]
APPROVING OFFICER, DEPT. OF HWYS.
OCTOBER 17th 1967.

I, R. Goble, of the City of Prince George, British
Columbia Land Surveyor, make oath and say
that I was present at and did personally
superintend the survey represented by this
plan, and that the survey and plan are correct.
The said survey was completed on
the 22nd day of November 1966.

Sworn before me at Prince George
this 24th day of November 1967

[Signature]
A Commissioner for taking affidavits
within British Columbia

Owner -----
Witness -----

APPROVED AS TO DEDICATION OF ROAD
BRITISH COLUMBIA HYDRO AND POWER AUTHORITY

[Signature]
Executive Director
[Signature]
Assistant Secretary

Mc William, Whyte, Goble & Associates
B.C. Land Surveyors
1595-5th Avenue, Prince George, B.C.

checked f s d x
Ref No 65003-10