

B7768

**Explanatory Plan to Accompany By-Law No 1588 Plan No ~~B7768~~**  
**City of Prince George, B.C., Closing Part of 16<sup>th</sup> Avenue,**  
**Plan 696, District Lot 936, Cariboo District**  
 Scale: 1 inch = 50 feet

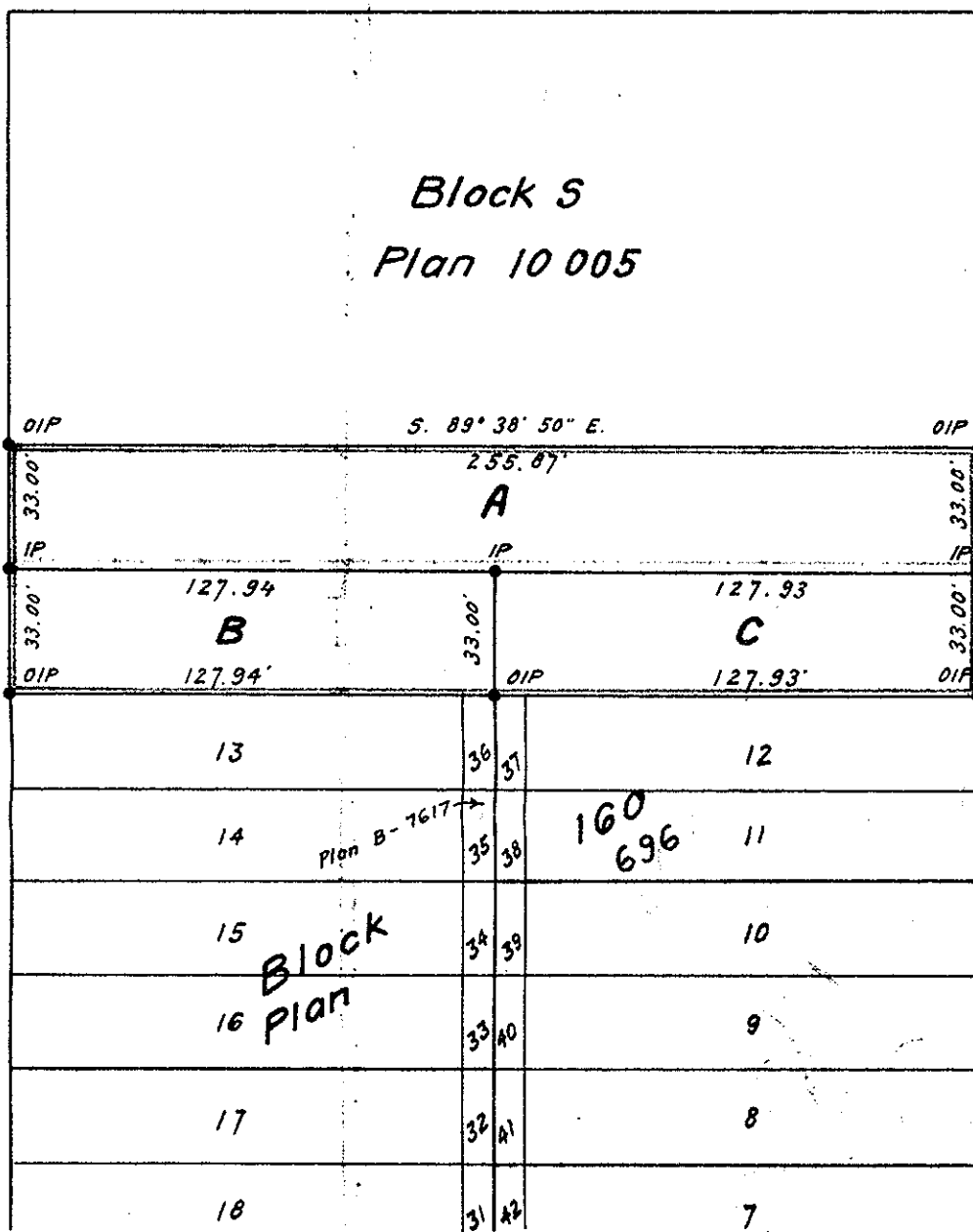
Deposited in the Land Registry Office at Kam  
 this 7 day of FEB 1963

*[Signature]*  
 Registrar

Plan No 17134

**Legend**

Bearings are astronomic and are derived from  
 the South boundary of Block S, Plan 10005, as S. 89° 38' 50" E.  
 Old Iron Posts found, shown • OIP  
 Iron Posts set, shown • IP



**Central Street**  
 Plan H-700

**Johnson Street**

Certified correct  
 this 16<sup>th</sup> day of September 1963.

*[Signature]*  
 Werner Segnitz, B.C.L.S.

**McWilliam, Whyte, Serle & Goble**  
 British Columbia Land Surveyors

checked  F  S  D  X Ref. No 63100