

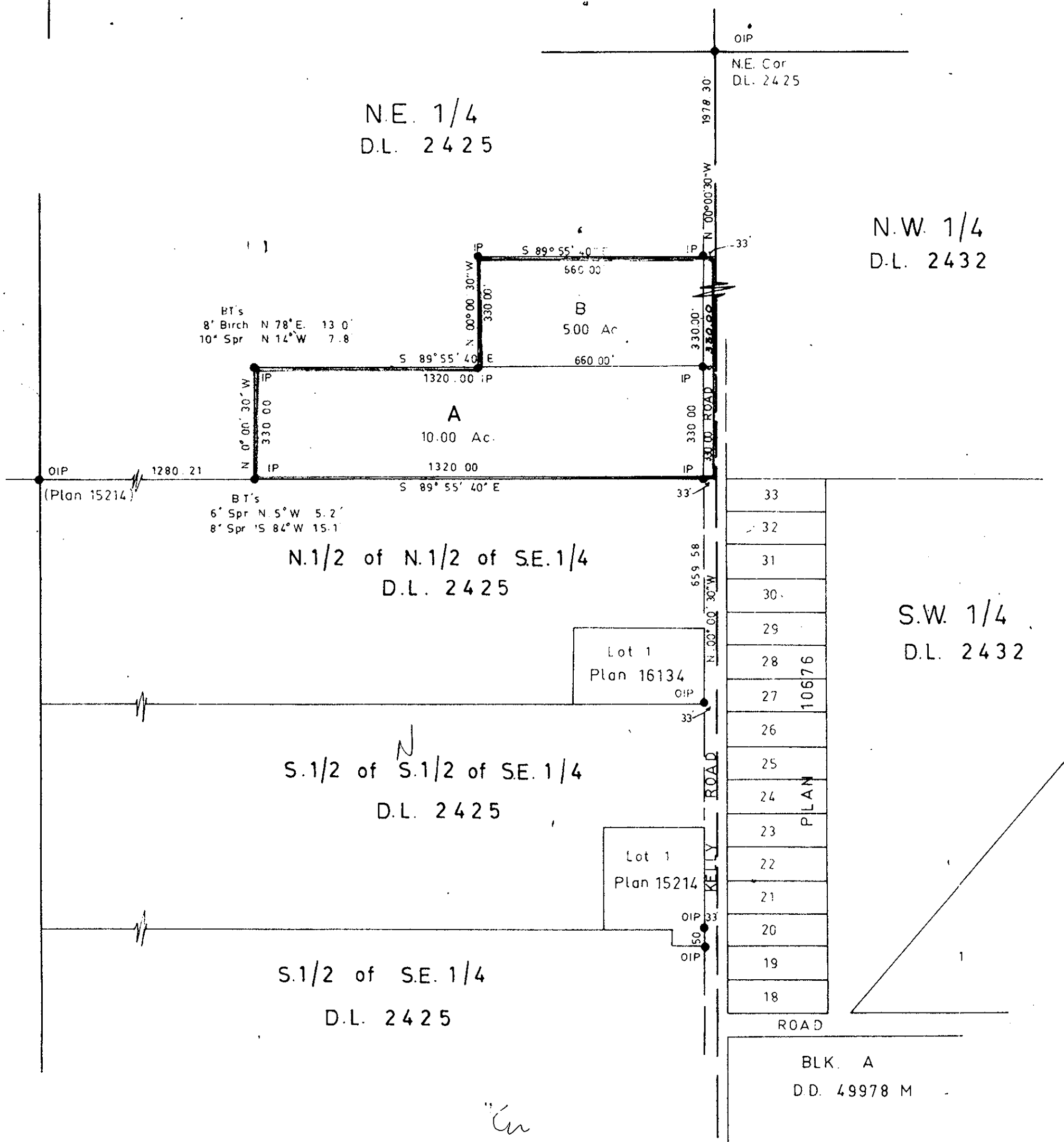
PLAN No 17105

Deposited in the Land Registry Office at
Prince George on the 2nd day of Oct. 1967.

E. M. Laidlaw
Registrar

PLAN OF SUBDIVISION OF PART
OF NE 1/4, DISTRICT LOT 2425,
CARIBOO DISTRICT.

SCALE: 1" = 300'



Bearings are astronomic and are derived from
OIP's along Kelly Road, shown as
N 0° 00' 30" W (Plan 15214)

- P.con Standard Concrete Post
- P.Rock Standard Rock Post
- PP Standard Pipe Post
- LP Standard Iron Post
- P Wooden Post
- L.P. Lead Plug
- Denoting "Old"
- WT Denoting "Witness"

V. Bartell... of the City of Prince George
British Columbia Land Surveyor, make oath and
say that I was present at and did personally
superintend the survey represented by this
plan and that the survey and plan are correct.
The said survey was completed on
the 28 day of August, 1967.

Victor Bartell
V. Bartell B.C.L.S.

Sworn before me at Prince George
this 28 day of August, 1967.

Approved under the Land Registry Act
on the 19th day of Sept. 1967.

Alfred Suddly
Approving Officer
Dept. of Highways

[Signature]
A commissioner for taking of oaths
within British Columbia.

Owner *E. Sanderson*

Witness *[Signature]*

McWilliam—Whyte—Gable & Associates		
B.C. LAND SURVEYORS		
KAMLOOPS — PRINCE GEORGE		
Job No.	FB-R	FILE NO.
57136		