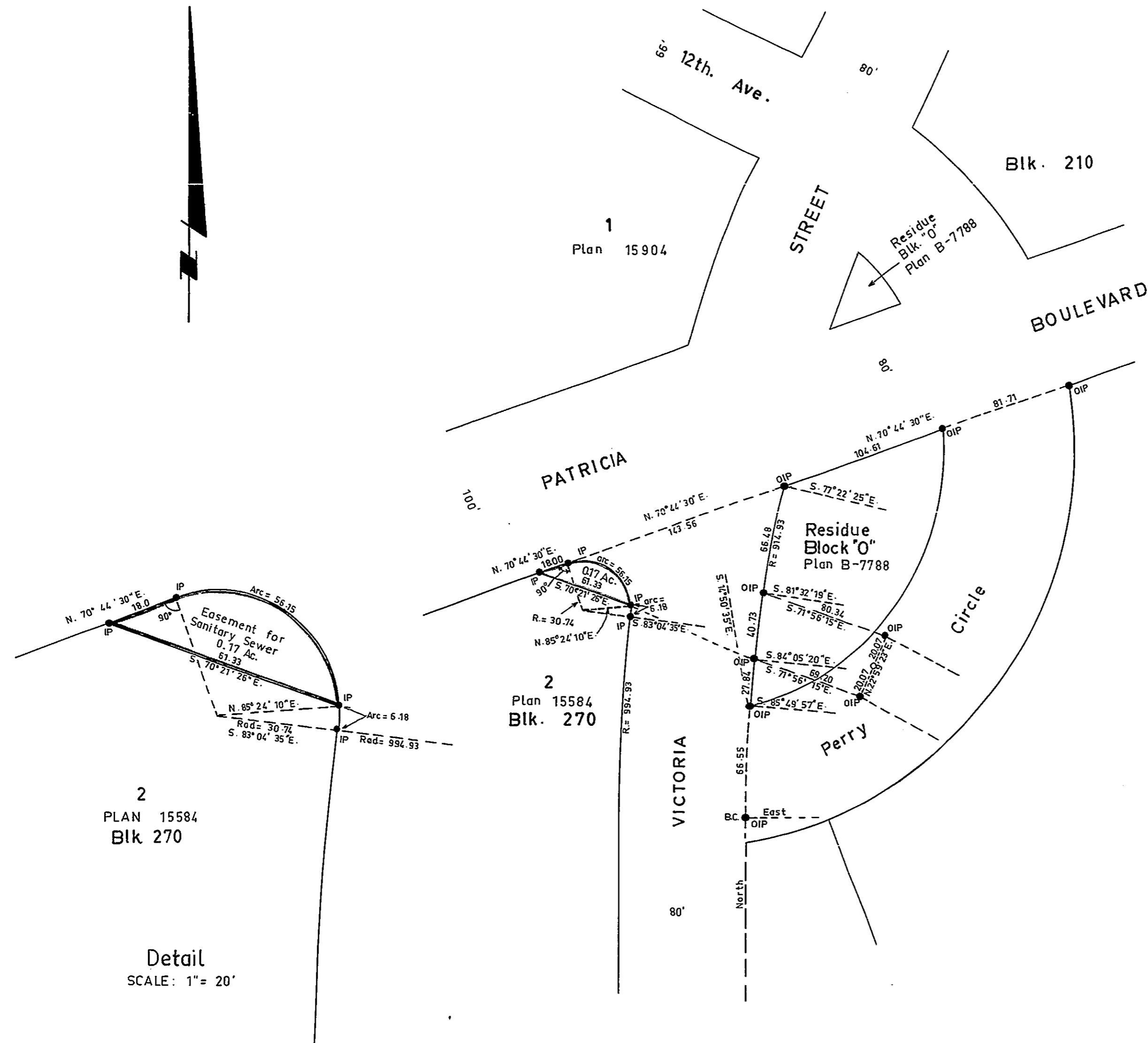


PLAN OF RIGHT-OF-WAY IN LOT 2,
BLOCK 270, PLAN 15584, DISTRICT LOT 343,
CARIBOO DISTRICT. SCALE: 1" = 50'

PLAN No 17101
Deposited in the Land Registry Office at
Prince George on the 28 day of Sept. 1967

A. Daniluck
Registrar



Bearings are astronomic and are derived from
OIP's on South bdy. of Patricia Blvd.
as shown.

- ⊙ P.con. ----- Standard Concrete Post.
- ⊙ P.Rock ----- Standard Rock Post.
- P.P. ----- Standard Pipe Post.
- I.P. ----- Standard Iron Post.
- P. ----- Wooden Post.
- L.P. ----- Lead Plug.
- ----- Denoting "Old"
- WT. ----- Denoting "Witness"

I, A. Daniluck... of the City of Prince George
British Columbia Land Surveyor, make oath and
say that I was present at and did personally
superintend the survey represented by this
plan and that the survey and plan are correct.

The said survey was completed on
the 10th day of August, 1967

A. Daniluck
A. DANILUCK, B.C.L.S.

Approved under the Land Registry Act
on the 11th day of AUG 1967.

C. E. Obit P. Eng.
Approving Officer
City of Prince George

Sworn before me at Prince George...
this 10th day of August, 1967.

A. Daniluck
A commissioner for taking affidavits
within British Columbia.

Owner

Witness

2
PLAN 15584
Blk 270

Detail
SCALE: 1" = 20'

McWilliam-Whyte-Goble & Associates		
B.C. LAND SURVEYORS		
KAMLOOPS		PRINCE GEORGE
Job No.	FB-P	FILE No.
S7100-8-B		