

PLAN OF SUBDIVISION OF PART OF  
N. W. 1/4 OF N. W. 1/4  
DISTRICT LOT 1599  
CARIBOO DISTRICT - BRITISH COLUMBIA

SCALE: 1" = 200'

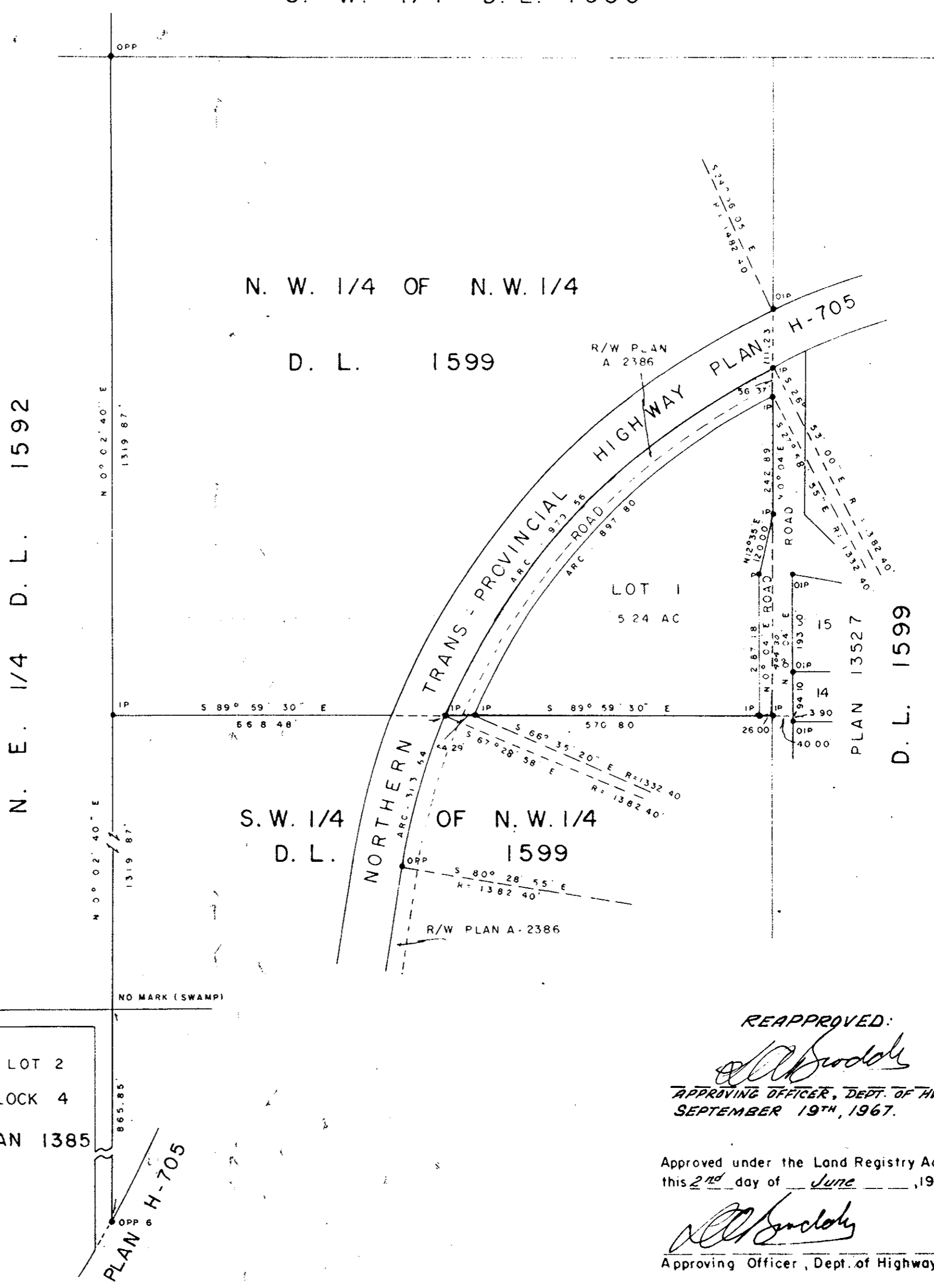
NOTE: Bearings are astronomic, derived from the  
West Boundary of Lot 15, Plan 13527

LEGEND: • OIP denotes an old iron pin found.  
• IP denotes an iron pin placed on this survey.

PLAN No. 17097  
Deposited in the Land Registry  
Office at Prince George, B.C. this  
27 day of Sept, 1967.

*P. H. Leland*  
Registrar

S. W. 1/4 D. L. 1600



ROMAN CATHOLIC EPISCOPAL CORPORATION  
OF PRINCE RUPERT

*Fergius McGroady*

Signed

CENTENNIAL MORTGAGE CORPORATION LTD

*[Signature]*  
PRESIDENT

VIC. PRESIDENT

I, DONALD A. DUFFY, of the City of Prince George,  
a British Columbia Land Surveyor make oath and say  
that I was present at and did personally superintend  
the survey represented by this plan and that the survey  
and plan are correct. The said survey was completed  
on the 24th day of November, 1966.

*[Signature]*  
B. C. L. S. &

Sworn before me this 8th  
day of MAY, 1967

*[Signature]*  
A Commissioner for taking Affidavits  
within the Province of British Columbia.

REAPPROVED:  
*[Signature]*  
APPROVING OFFICER, DEPT. OF HWYS.  
SEPTEMBER 19TH, 1967.

Approved under the Land Registry Act  
this 2nd day of June, 1967.

*[Signature]*  
Approving Officer, Dept. of Highways.

W. D. USHER & ASSOCIATES  
LAND SURVEYORS  
PRINCE GEORGE - B. C.  
AS 9 1810