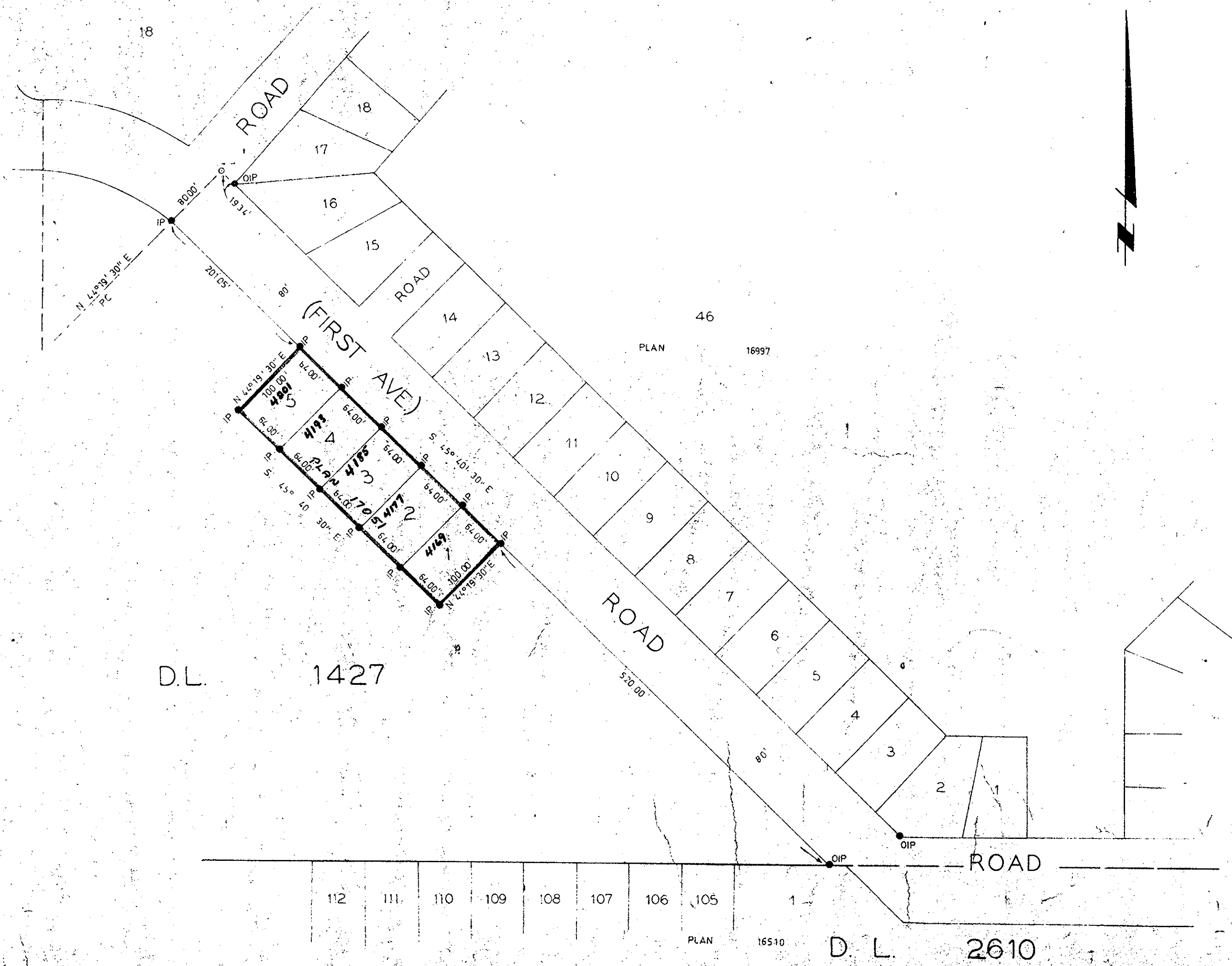


PLAN OF SUBDIVISION OF
 PART DISTRICT LOT 1427
 CARIBOO DISTRICT.
 SCALE 1" = 100'

Registrar



- Bearings are astronomic and are derived from
 OIPs along First Avenue shown as S 45°40'30\"/>
 - Rcon. Standard Concrete Post.
 - P Rock Standard Rock Post
 - RP Standard Pipe Post
 - I.P. Standard Iron Post.
 - P Wooden Post
 - L.P. Lead Plug
 - Denoting "Old"
 - WT. Denoting "Witness"

I, V Bartell of the City of Prince George
 British Columbia Land Surveyor, make oath and
 say that I was present at and did personally
 superintend the survey represented by this
 plan and that the survey and plan are correct.
 The said survey was completed on
 the 28th day of August 1967.

V. Bartell
 V. Bartell, B.C.L.S.

Sworn before me at Prince George
 this 29th day of August 1967.

J. J. [Signature]
 A commissioner for taking of affidavits
 within British Columbia.

Approved under the Land Registry Act
 on the _____ day of _____ 19_____

Approving Officer
 City of Prince George

Owner
 Witness

| | | |
|------------------------------------|------|---------------|
| McWilliam-Whyte-Goble & Associates | | |
| B.C. LAND SURVEYORS | | |
| KAMLOOPS | | PRINCE GEORGE |
| Job No. | FB-P | FILE NO. |
| | | 67277 |