

PLAN OF SUBDIVISION OF  
 LOTS 47 & 48-PLAN 11088  
**DISTRICT LOT 4047 &**  
 PART OF THE N.E. 1/4 OF  
**DISTRICT LOT 4047**  
 EXCEPT PLANS 11088 & 14806  
 CARIBOO DISTRICT-BRITISH COLUMBIA

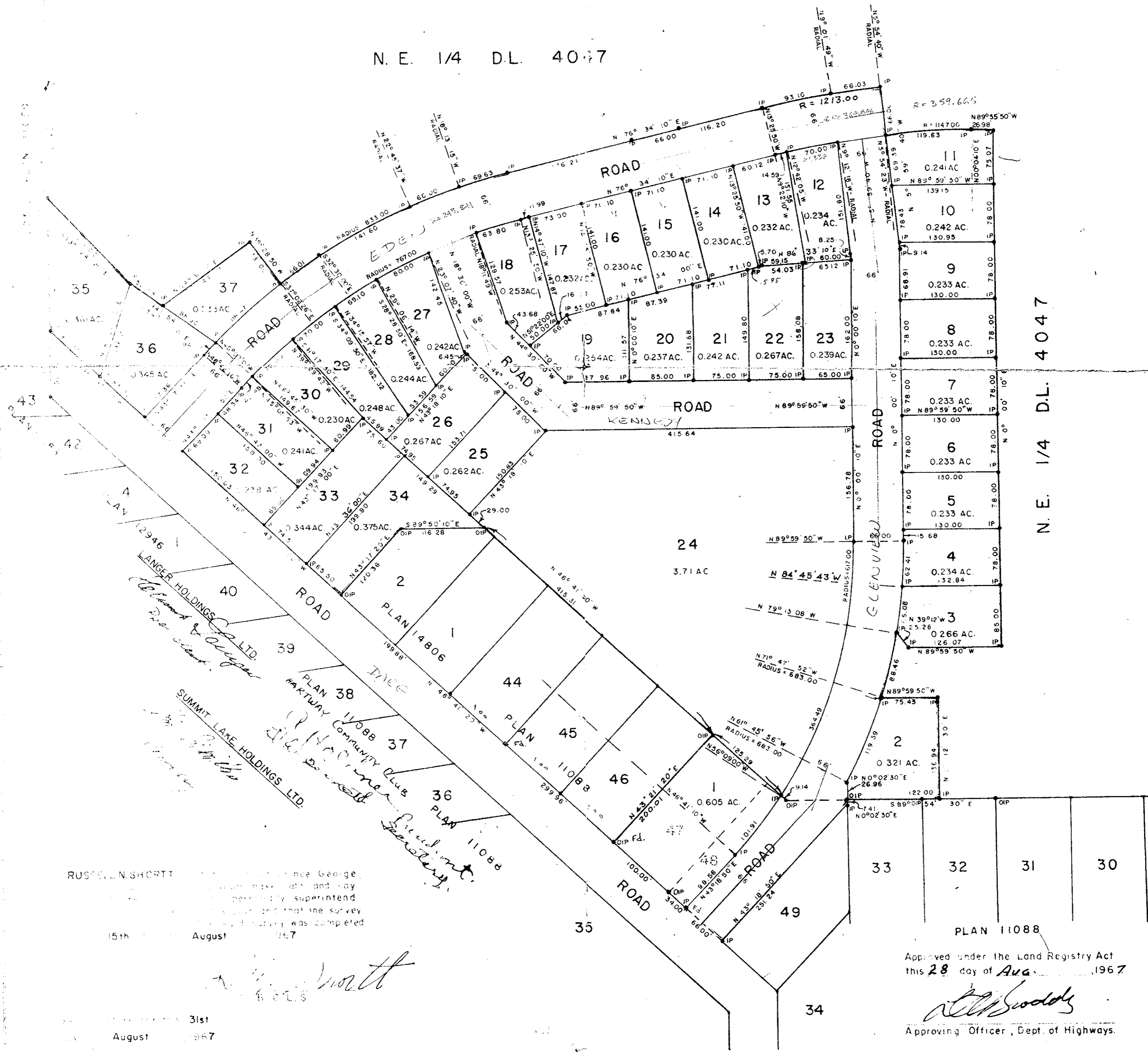
PLAN No **17047**  
 Deposited in the Land Registry  
 Office at Prince George, B.C. this  
 5 day of Sept, 1967.  
 Registrar *[Signature]*

SCALE 1" = 100'

NOTE Bearings are astronomic, derived from  
 the southwesterly boundary of Lots 44-48,  
 Plan 11088.  
 Dimensions shown on curves are arc distances

- LEGEND
- OPP Denotes an old pipe post found
  - PP Denotes a pipe post placed on this survey
  - OIP Denotes an old iron pin found
  - IP Denotes an iron pin placed on this survey

N. E. 1/4 D.L. 4047



RUSSELL N. SHORTT  
 I, Russell N. Shortt, Surveyor, certify that the above is a true and correct copy of the original plan as deposited in my office and that the survey was completed on the 15th day of August, 1967.

Approved under the Land Registry Act  
 this 28 day of Aug, 1967.  
*[Signature]*  
 Approving Officer, Dept. of Highways.