

PLAN OF SUBDIVISION OF PART OF
 LOT A, PLAN 15725
DISTRICT LOT 4047
 EXCEPT PLANS 15861 & 16456
 CARIBOO DISTRICT - BRITISH COLUMBIA

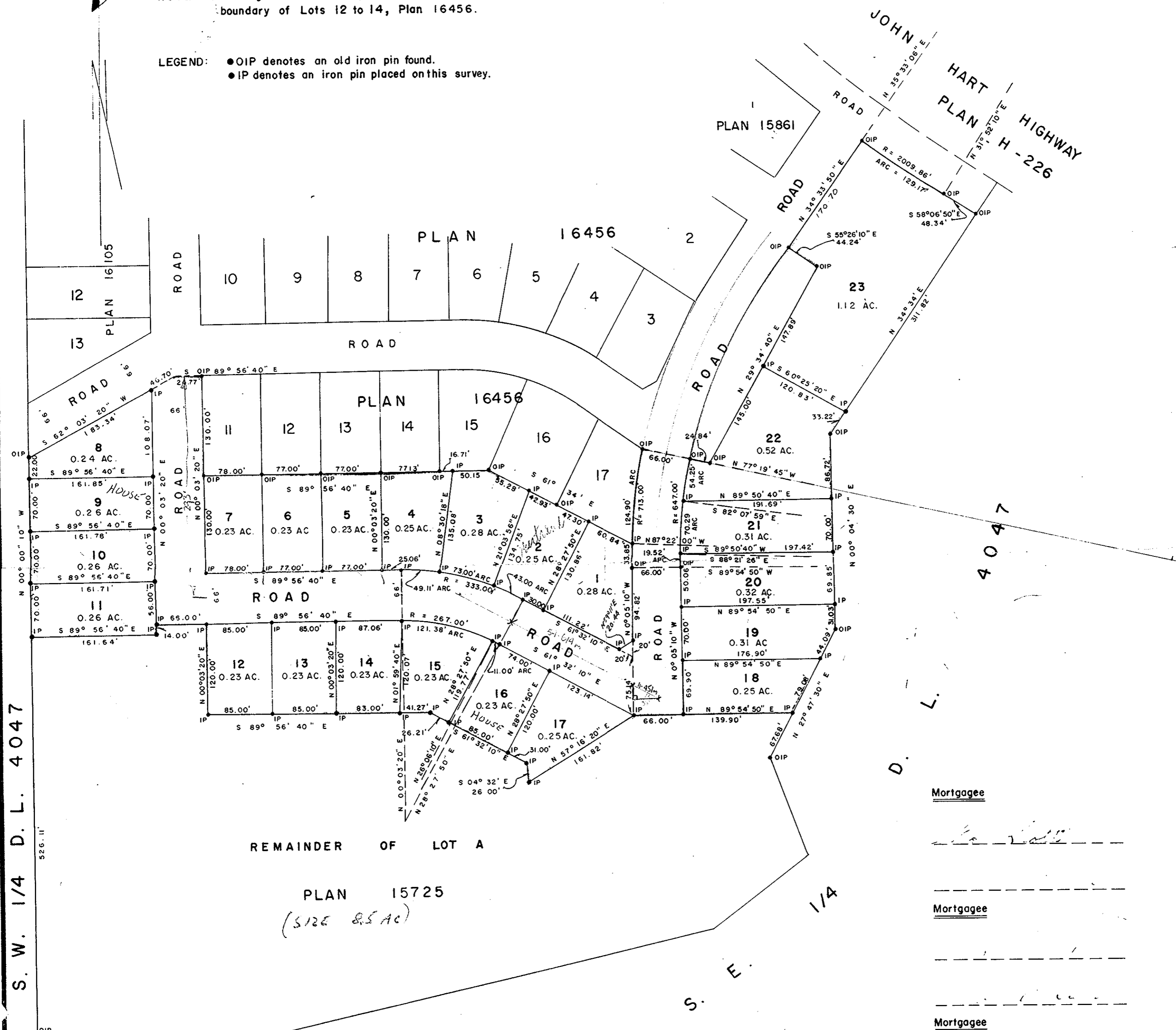
PLOTTED. GT
 PLAN No 17033
 Deposited in the Land Registry
 Office at Prince George, B.C. this
25 day of July, 1967.

SCALE: 1" = 100'

NOTE: Bearings are astronomic, derived from the South
 boundary of Lots 12 to 14, Plan 16456.

LEGEND: ● OIP denotes an old iron pin found.
 ● IP denotes an iron pin placed on this survey.

Registrar *[Signature]*



Mortgagee

Mortgagee

Mortgagee

BIRCHWOOD HOLDINGS LTD.

Mortgagee

I, DONALD A. DUFFY, of the City of Prince George,
 a British Columbia Land Surveyor make oath and say
 that I was present at and did personally superintend
 the survey represented by this plan and that the survey
 and plan are correct. The said survey was completed
 on the 14th day of OCTOBER, 1966.

[Signature of Donald A. Duffy]
 B. C. L. S.

[Signature]

Approved under the Land Registry Act
 this 28 day of July, 1967

[Signature]
 Approving Officer, Dept. of Highways.

Sworn before me this 3RD
 day of August, 1967

[Signature]
 A Commissioner for taking Affidavits
 within the Province of British Columbia.

W. D. USHER & ASSOCIATES
 LAND SURVEYORS
 PRINCE GEORGE - B. C.
 AZ 66 1952