

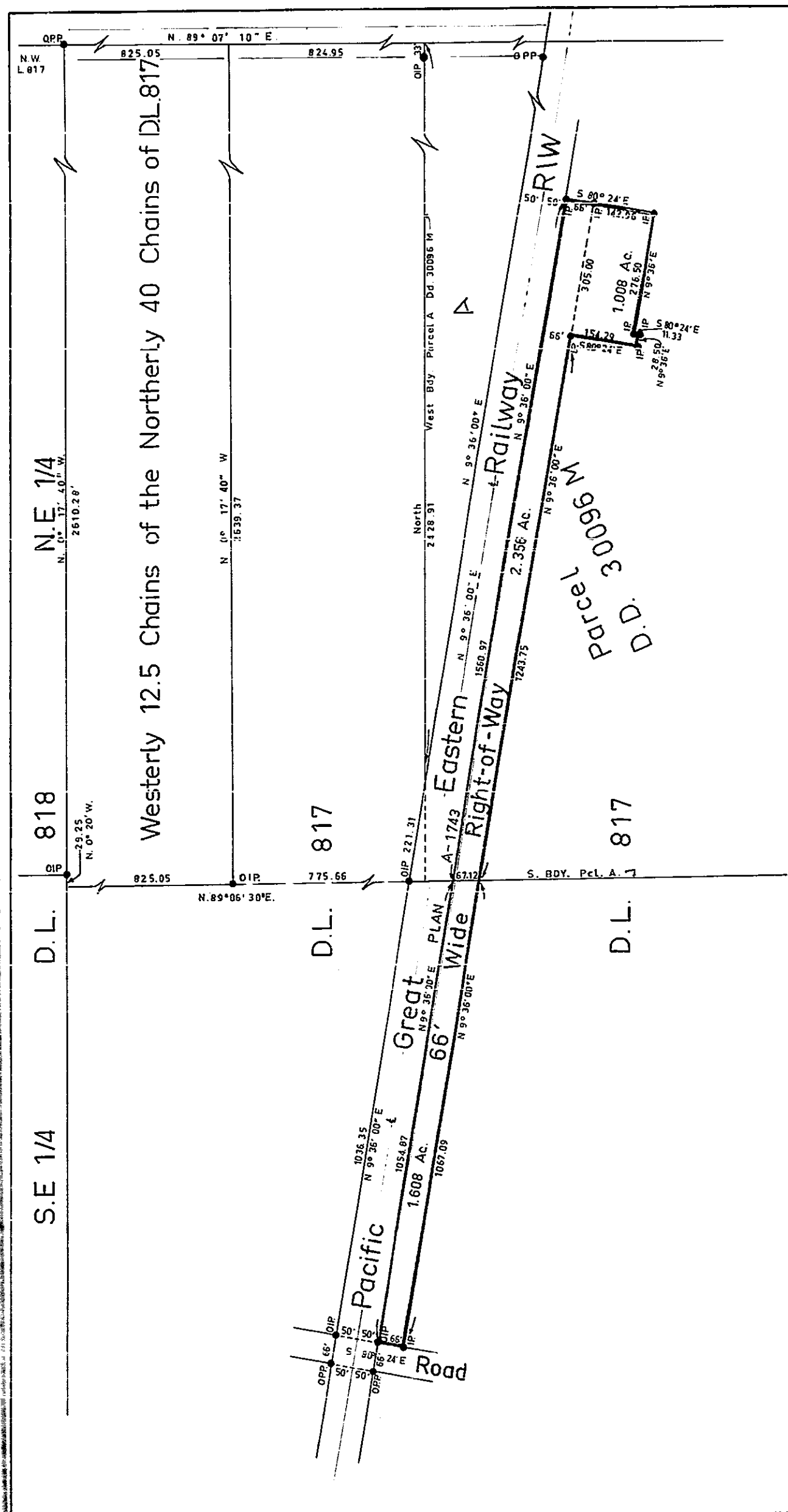
**PLAN No 17003**  
 Deposited in the Land Registry Office at  
 Prince George on the 15<sup>th</sup> day of Sept. 1965

*[Signature]*  
 Registrar

Plan of Right-of-Way in  
 Part of Parcel A, D.D. 30096 M, lying to  
 the East of P.G.E. Railway Right-of-Way  
 in District Lot 817, and Part of District  
 Lot 817 lying to the South of Parcel A  
 and to the East of P.G.E. Railway Right-of-Way.  
 Cariboo District.

Scale: 1" = 200'

Area Required	
D.L. 817	1.608 Ac.
Pcl. A	3.364 Ac.
<b>Total</b>	<b>4.972 Ac.</b>



Bearings are astronomic, derived from OIP & OPP on 1, R. J. Goble... of the City of Prince George, British Columbia Land Surveyor, make oath and say that I was present at and did personally superintend the survey represented by this plan and that the survey and plan are correct.

The said survey was completed on the 23<sup>rd</sup> day of Sept. 1965

Sworn before me at PRINCE GEORGE this 15<sup>th</sup> day of Sept. 1965

Approved under the Land Registry Act on the 15<sup>th</sup> day of November 1965.

*[Signature]*  
 Approving Officer  
 DEPT OF HIGHWAYS

*[Signature]*  
 Commissioner for taking affidavits within British Columbia.  
**NORTHWOOD PULP LIMITED**  
 Owner  
*[Signature]* President  
*[Signature]* Secretary  
 Witness

McWilliam—Whyte—Serle—Goble  
 B. C. Land Surveyors  
 Kamloops—Prince George  
 checked [ ] S. [ ] D. [ ] X. [ ] Ref. N 65009-C