

PLAN OF SUBDIVISION OF PART  
DISTRICT LOT 1427  
CARIBOO DISTRICT.

Scale: 1" = 100'

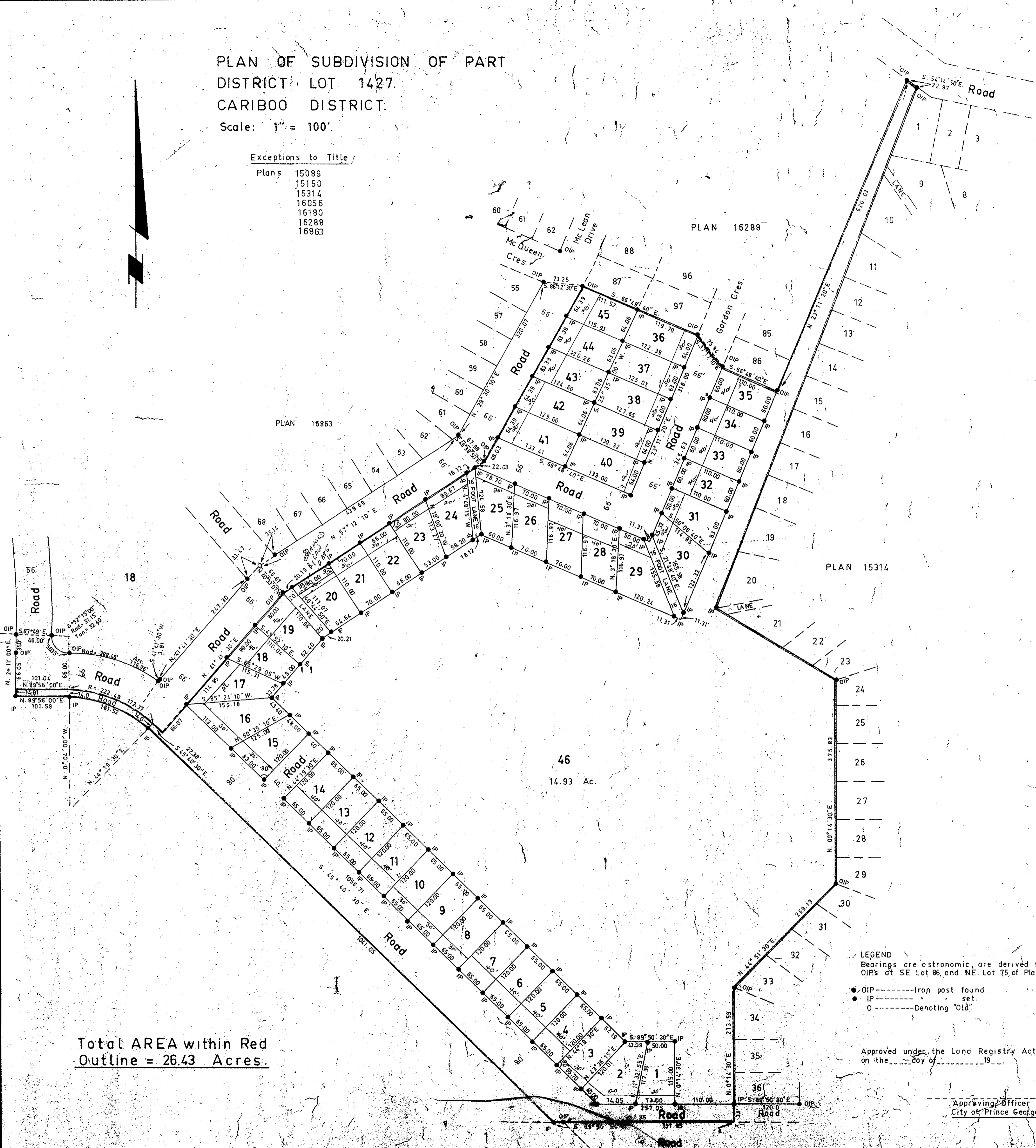
Exceptions to Title

Plans 15089  
15150  
15314  
16056  
16180  
16288  
16863

Plan No. 16997

Deposited in the Land Registry Office at  
Prince George this \_\_\_\_\_ day of \_\_\_\_\_ 19\_\_\_\_

Registrar



Total AREA within Red  
Outline = 26.43 Acres.

46  
14.93 Ac.

LEGEND  
Bearings are astronomic, are derived from  
OIP's at SE Lot 86, and NE Lot 75 of Plan 16288.

- OIP ----- Iron post found.
- IP ----- set.
- ----- Denoting "Old".

Approved under the Land Registry Act  
on the \_\_\_\_\_ day of \_\_\_\_\_ 19\_\_\_\_

Approving Officer  
City of Prince George

I, A. Daniluck of the City of Prince George,  
British Columbia Land Surveyor, make oath  
and say that I was present at and did  
personally superintend the survey represented  
by this plan and that the survey and plan  
are correct.  
The said survey was completed on  
the 21st day of April 1967.

*A. Daniluck*  
A. Daniluck, B.C.L.S.

(Sworn before me at Prince George  
this 24th day of April 1967

*Commissioner*  
A Commissioner for taking affidavits  
within British Columbia.

Owner

Witness

Mc William, Whyte, Goble & Associates  
B.C. Land Surveyor  
1595 - 5th Avenue Prince George, B.C.  
Ref. No. 64027-III