

RECEIVED

PLAN No 16996

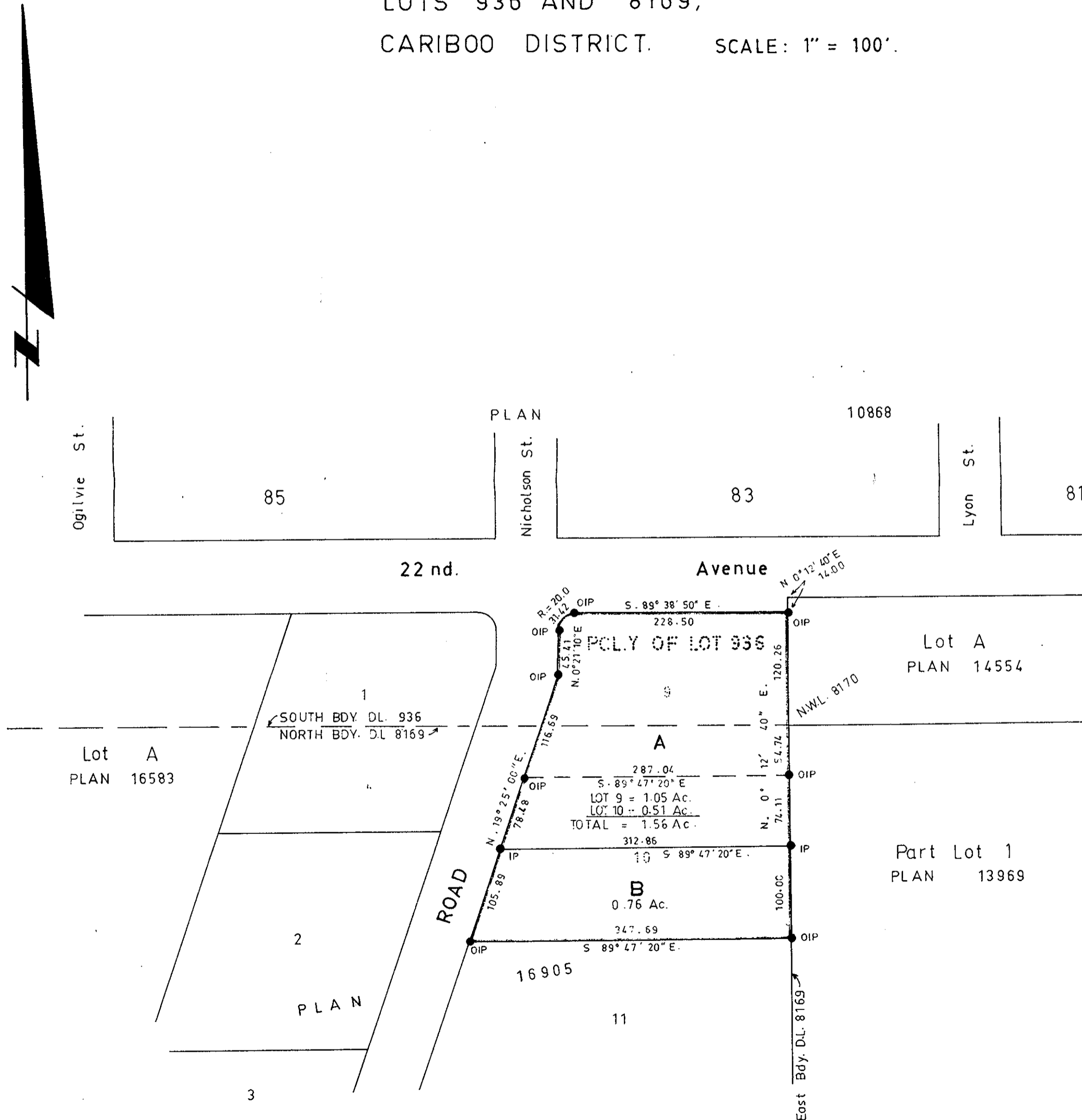
OCT 4 1967

Deposited in the Land Registry Office at Prince George on the 8 day of Aug. 1967.

CITY ASSESSOR  
PRINCE GEORGE

*V. Bartell*  
Registrar.

PLAN OF SUBDIVISION OF LOTS 9  
AND 10, PLAN 16905, DISTRICT  
LOTS 936 AND 8169,  
CARIBOO DISTRICT. SCALE: 1" = 100'.



Bearings are astronomic and are derived from OIPs on North Bdy. of L. 9, DL. 936, as shown on Plan 16905

- P.con. .... Standard Concrete Post.
- P.Rock .... Standard Rock Post.
- P.P. .... Standard Pipe Post.
- I.P. .... Standard Iron Post.
- P. .... Wooden Post.
- L.P. .... Lead Plug.
- ..... Denoting "Old"
- WT. .... Denoting "Witness"

I, V. BARTELL, of the City of Prince George, British Columbia Land Surveyor, make oath and say that I was present at and did personally superintend the survey represented by this plan and that the survey and plan are correct. The said survey was completed on the 23rd day of June, 1967.

*V. Bartell*  
V. Bartell, B.C.L.S.

Sworn before me at Prince George, this 29th day of June, 1967

*[Signature]*  
A Commissioner for taking affidavits within British Columbia.

*[Signature]*  
Owner *[Signature]* Acting Mayor

OWNER *[Signature]*  
CLERK

Approved under the Land Registry Act on the 3rd day of AUG. 1967

*C. E. Olt P. Eng.*  
Approving Officer  
City of Prince George

McWilliam—Whyte—Goble & Associates		
B.C. LAND SURVEYORS		
KAMLOOPS — PRINCE GEORGE		
Job No.	FB-P	FILE No.
67173		