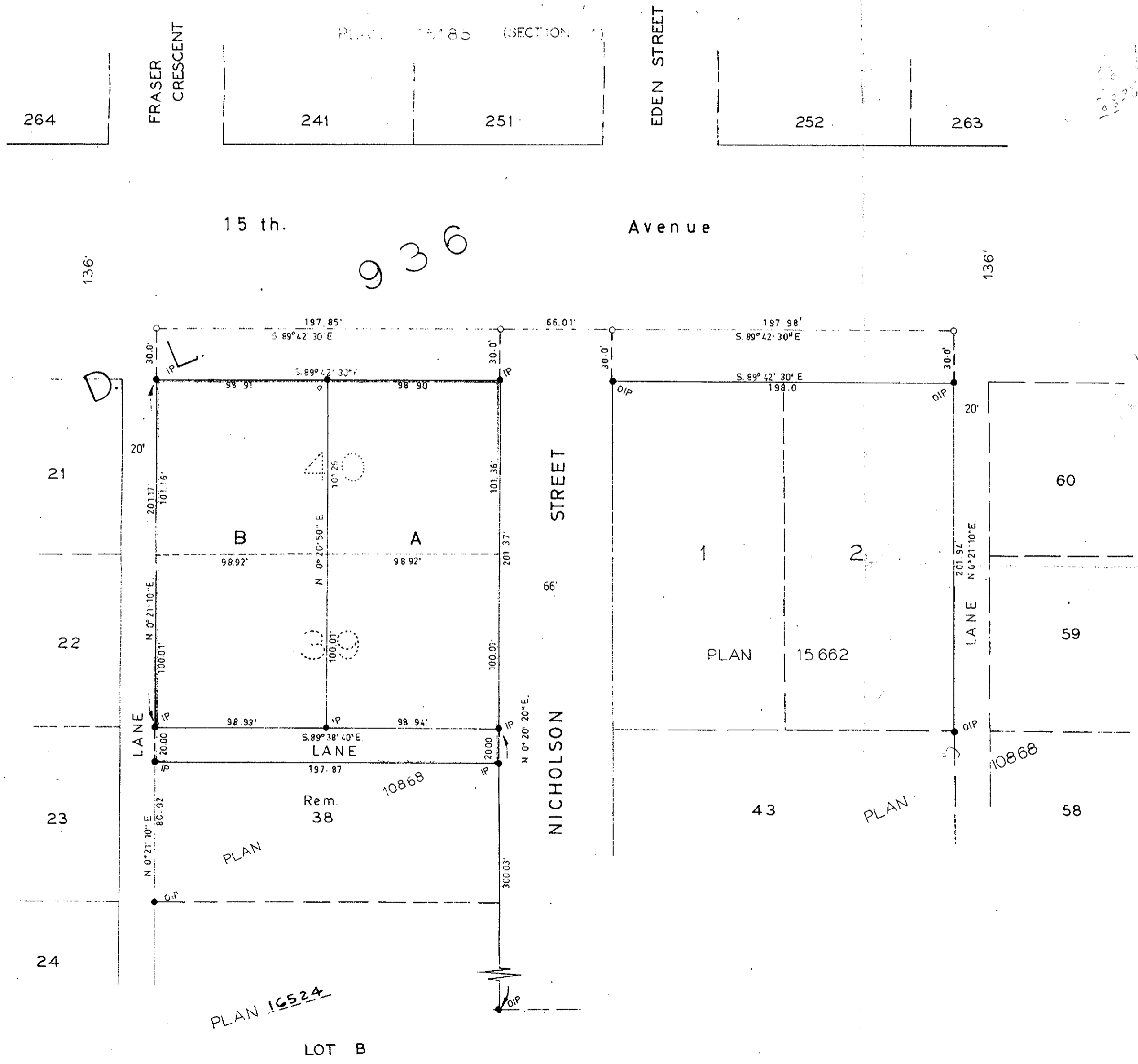


PLAN OF SUBDIVISION OF PART LOT 38,
AND LOTS 39, & 40, OF PLAN 10868,
DISTRICT LOT 936, CARIBOO DISTRICT.

SCALE: 1" = 50'

PLAN No 16962
Deposited in the Land Registry Office at
Prince George on the 22nd day of June 1967

A. Daniluck
Registrar



101.36
107.25
100.01
100.01
300.03

Inspected
March 10th 1967.

A. Daniluck
A. DANILUCK, B.C.L.S.

- Bearings are astronomic and are derived from
OJPS on North bdy. of Lot 1, and
Lot 2, Plan 15662.
- P.con. Standard Concrete Post.
 - P.Rock Standard Rock Post.
 - P.P. Standard Pipe Post.
 - I.P. Standard Iron Post.
 - P. Wooden Post.
 - L.P. Lead Plug.
 - Denoting "Old"
 - WT. Denoting "Witness"

I, A. DANILUCK of the City of Prince George
British Columbia Land Surveyor, make oath and
say that I was present at and did personally
superintend the survey represented by this
plan and that the survey and plan are correct
The said survey was completed on
the 22nd day of February 1967.

A. Daniluck
B.C.L.S.

Sworn before me at Prince George, B.C.
this 15th day of March 1967.

Approved under the Land Registry Act
on the 24th day of APRIL 1967.

C. E. Obat P. Eng.
Approving Officer
City of Prince George

W. J. D. Buckley
A commissioner for taking affidavits
within British Columbia

Owner *J. E. ...*
Witness *J. ...*