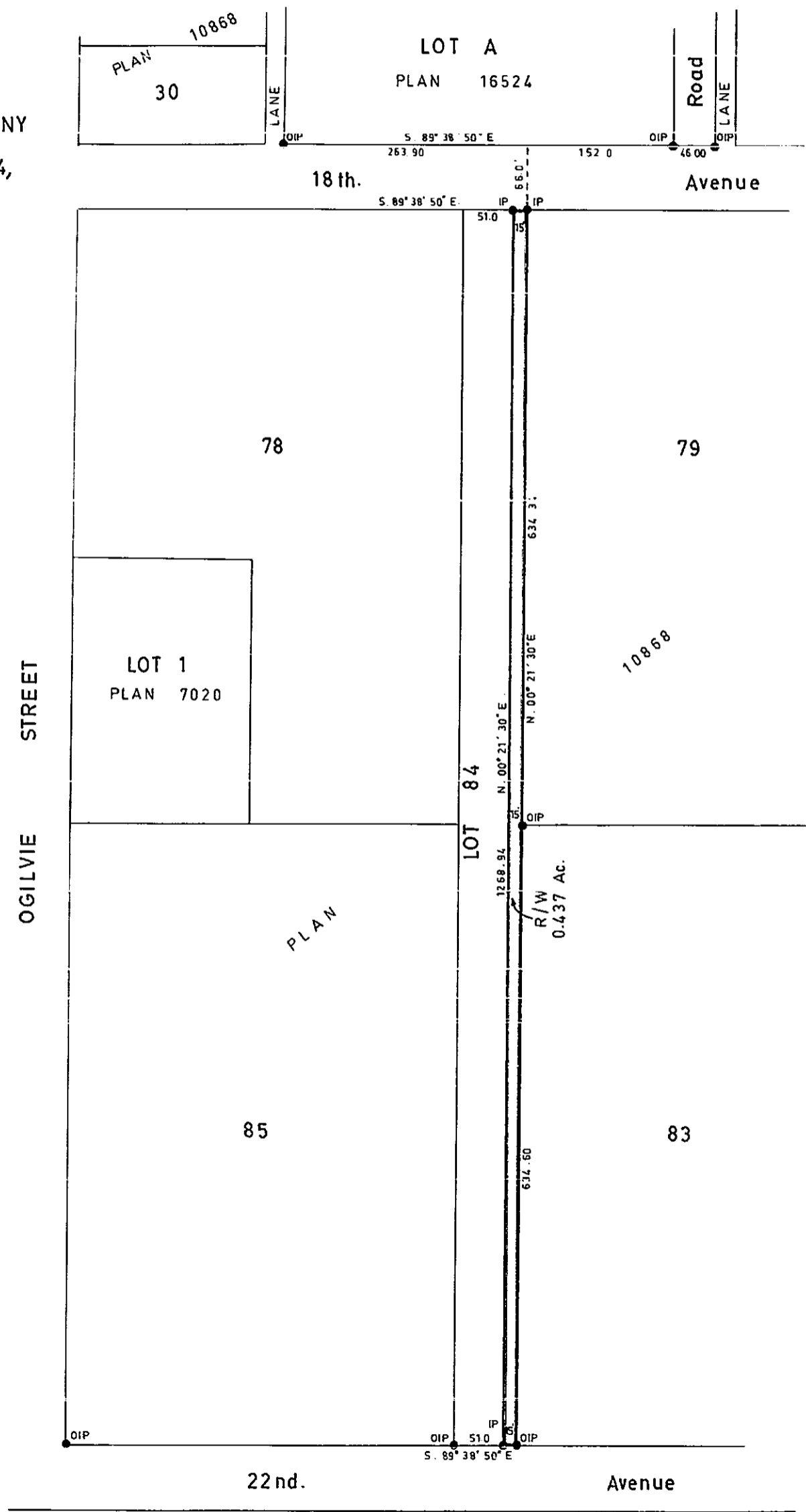


BRITISH COLUMBIA TELEPHONE COMPANY
 PLAN OF RIGHT-OF-WAY IN LOT 84,
 PLAN 10868, DISTRICT LOT 936,
 CARIBOO DISTRICT.
 SCALE: 1"= 100'



PLAN No 16951
 Deposited in the Land Registry Office at
 Prince George on the 19 day of June 1967.

V. Bartell
 Registrar

- Bearings are astronomic and are derived from OIPs along North Bdy. of 22nd Ave., shown as S 89° 38' 50" E. on Plan 10868.
- ⊙ P.con. Standard Concrete Post.
 - ⊙ P.Rock Standard Rock Post.
 - IP Standard Pipe Post.
 - L.P. Standard Iron Post.
 - P. Wooden Post.
 - L.P. Lead Plug.
 - Denoting "Old"
 - WT. Denoting "Witness"

I, V. BARTELL, of the City of Prince George, British Columbia Land Surveyor, make oath and say that I was present at and did personally superintend the survey represented by this plan and that the survey and plan are correct. The said survey was completed on the 7 day of June, 1967.

V. Bartell
 V. BARTELL, B.C.L.S.

Sworn before me at Prince George, B.C. on this 7 day of June, 1967.

[Signature]
 A Commissioner for taking affidavits for within British Columbia.

BOOK OF REFERENCE	
DESCRIPTION	AREA
Lot 84, Plan 10868, DL 936	0.437 Ac.

McWilliam—Whyte—Goble & Associates		
B.C. LAND SURVEYORS		
KAMLOOPS—PRINCE GEORGE		
Job No.	F.B.-P.	FILE No.
67169		