

PLAN No 16945
 Deposited in the Land Registry
 Office at Prince George, B.C. this
15 day of June, 1962

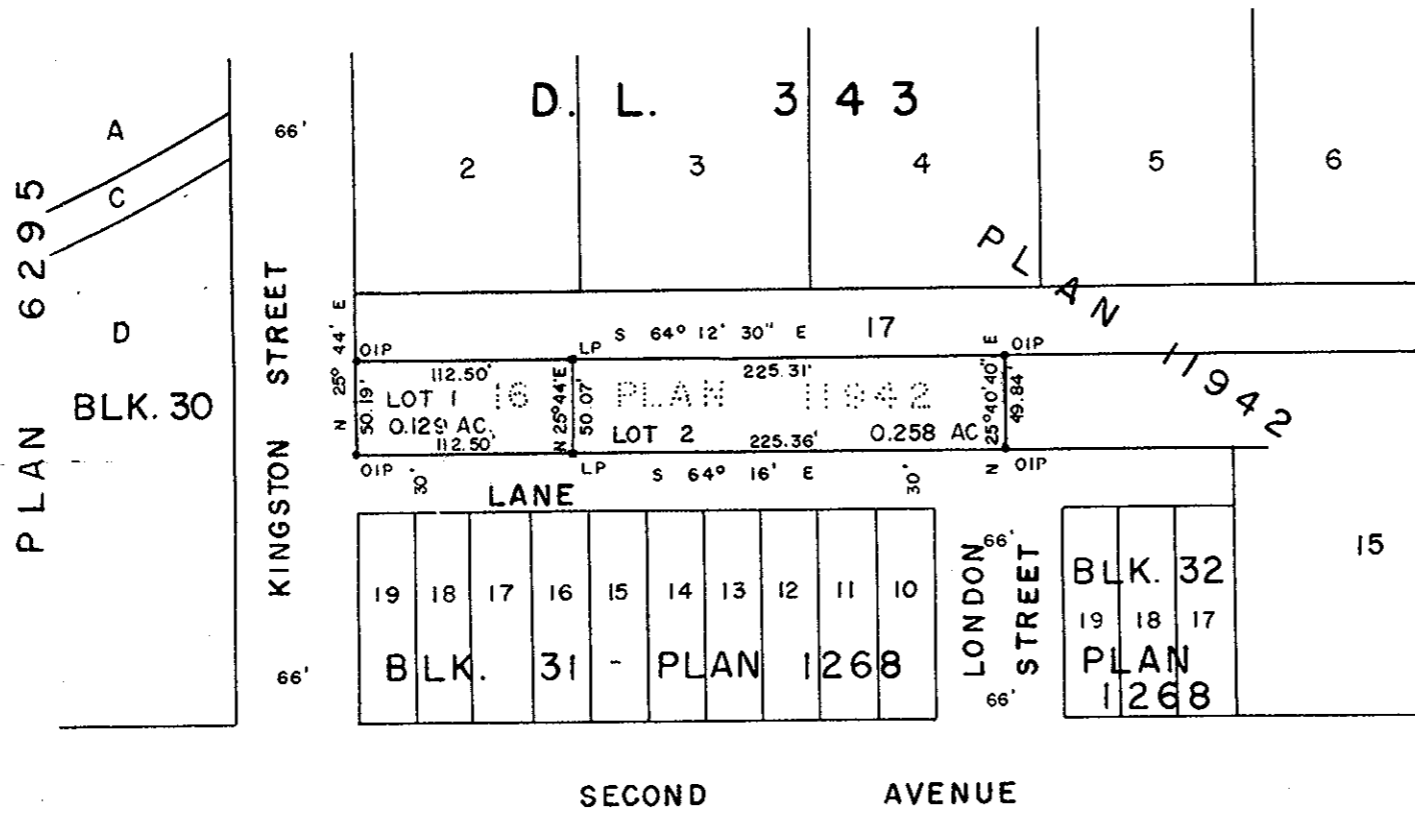
[Signature]
 Registrar

PLAN OF SUBDIVISION OF
 LOT 16, PLAN 11942
DISTRICT LOT 343
 CARIBOO DISTRICT - BRITISH COLUMBIA

SCALE: 1" = 100'

NOTE: Bearings are astronomic, derived from the
 South Boundary of Lot 16, Plan 11942.

LEGEND ● OIP denotes an old iron pin found.
 ■ LP denotes a lead plug placed on this survey.



Reapproved under the Land Registry Act
 this 2nd day of JUNE, 1962

C. E. Obot P. Eng.
 Approving Officer, City of Prince George

I, DONALD A. DUFFY, of the City of Prince George,
 a British Columbia Land Surveyor make oath and say
 that I was present at and did personally superintend
 the survey represented by this plan and that the survey
 and plan are correct. The said survey was completed
 on the 18th day of October, 1966.

[Signature]
 B. C. L. S.

Sworn before me this 24th
 day of OCTOBER, 1966

[Signature]
 A Commissioner for taking Affidavits
 within the Province of British Columbia.

[Signature]
~~ZWLEERS HOLDINGS LTD.~~

[Signature]
Theresa Zwickers

Thomas McScow
 (Witness as to both signatures)

Approved under the Land Registry Act
 this 24th day of JAN, 1962

C. E. Obot P. Eng.
 Approving Officer, City of Prince George.