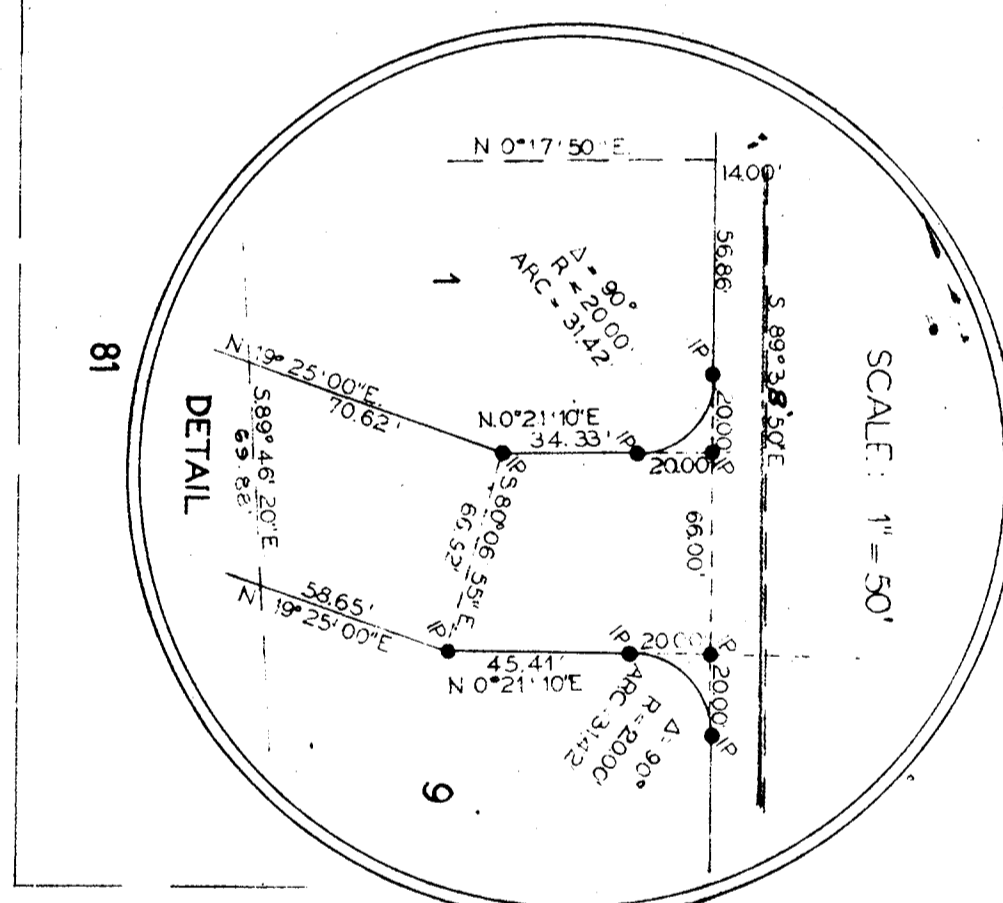
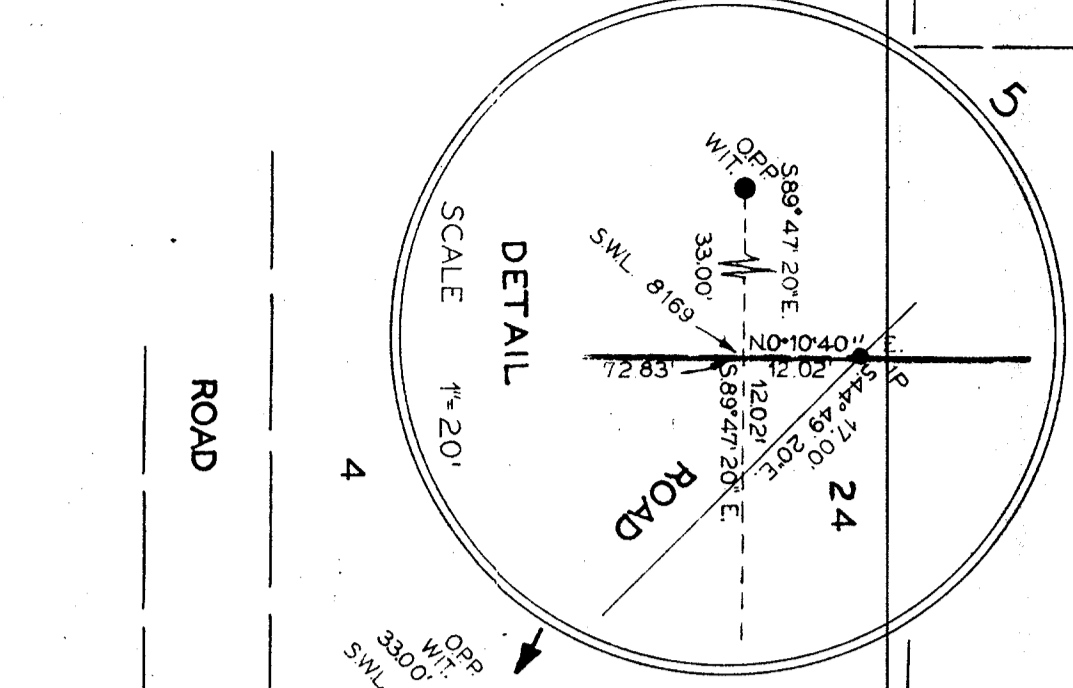
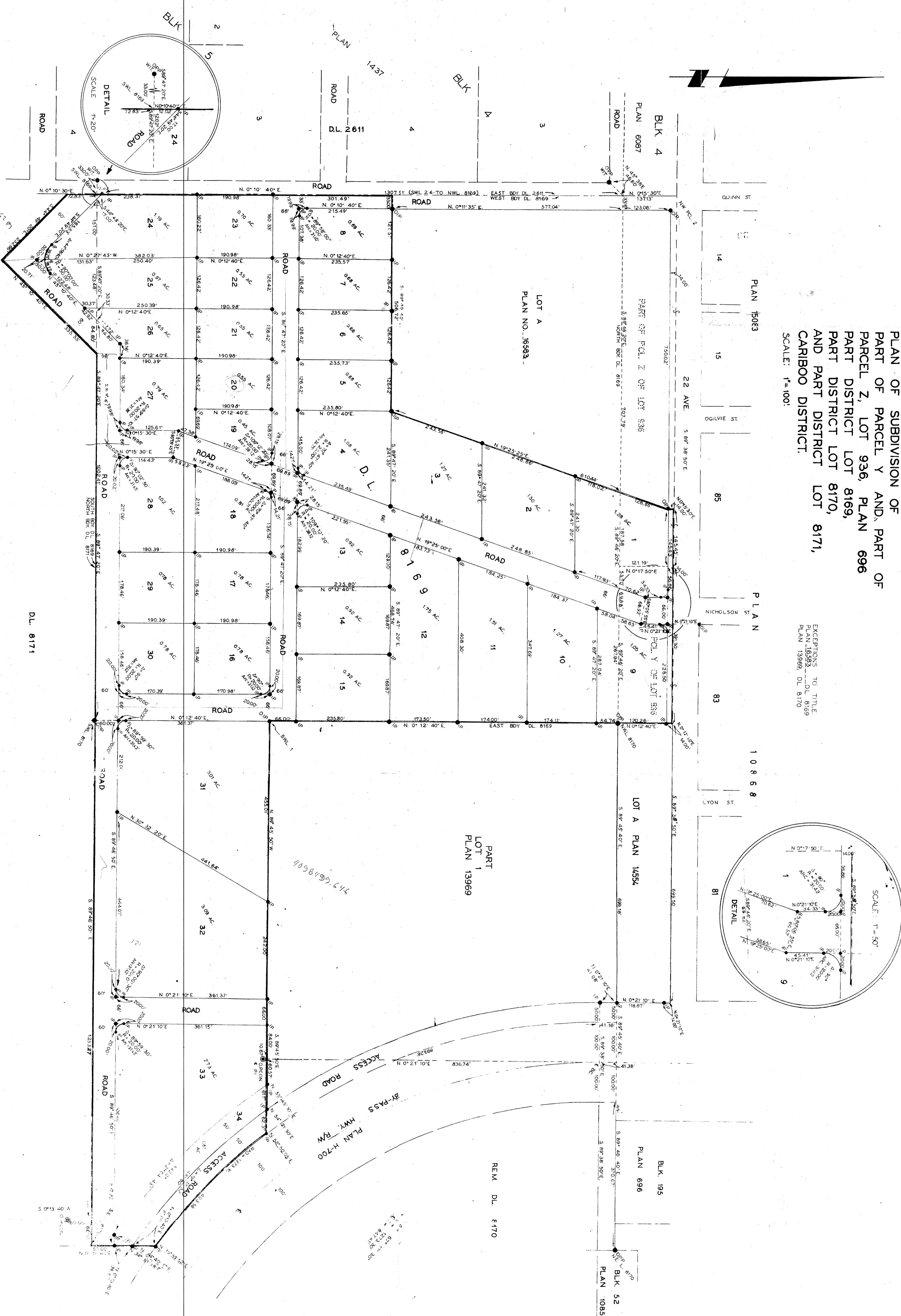


PLAN OF SUBDIVISION OF
 PART OF PARCEL Y AND PART OF
 PARCEL Z, LOT 936, PLAN 696
 PART DISTRICT LOT 8169,
 PART DISTRICT LOT 8170,
 AND PART DISTRICT LOT 8171,
 CARIBBOO DISTRICT.
 SCALE: 1"=100'

EXCEPTIONS TO TITLE
 PLAN 16905 --- DL 8169
 PLAN 13969 --- DL 8170



PLAN NO. 16905

[Signature]

Standard Conventions:
 • Standard of 1/4" = 100'
 • Bearings from true north
 • Distances in feet and inches
 • Curved boundaries shown with centerline and radius
 • Right-of-way lines shown with 'RW'
 • Easements shown with 'EAS.'
 • Access roads shown with 'ACCESS ROAD'
 • Bi-pass roads shown with 'BI-PASS ROAD'
 • Highways shown with 'HWY. RW'
 • Remains shown with 'REM. DL'

C. E. O'Neil, Jr.
 Civil Engineer

Approved under the Land Registry Act
 No. 97 of 1914 at *[Signature]* 1915

[Signature]
 Deputy Registrar

