

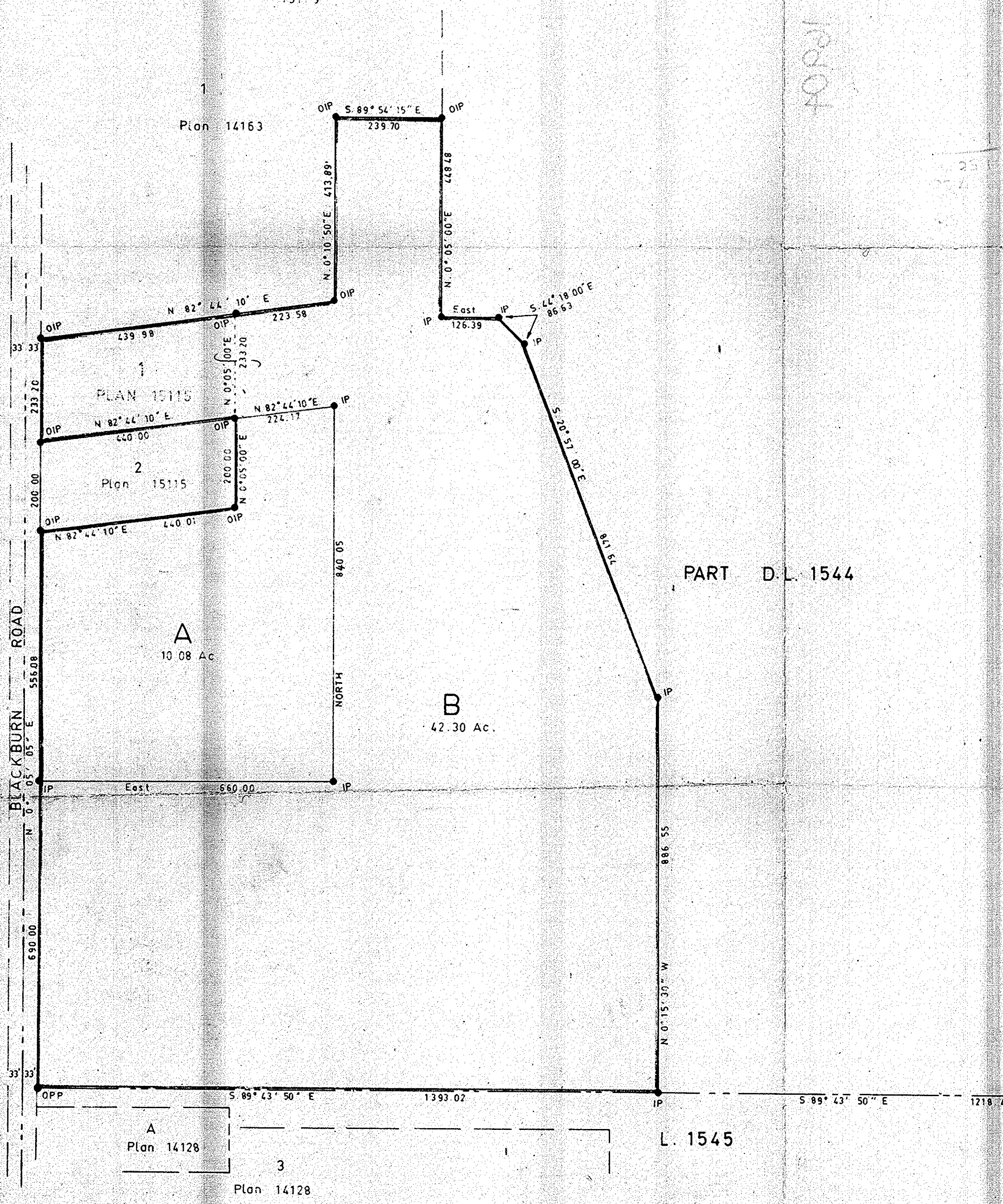
Plotted (NJ) (05)

PLAN OF SUBDIVISION OF LOT 1,
PLAN 15115, AND PART LOT 1544.
CARIBOO DISTRICT. Scale: 1" = 200'

PLAN No 16904
Deposited in the Land Registry Office at
Prince George on the 12 day of May 1967

P. H. Carter
Registrar

Exceptions to Title
Plan 14163
" 15115



PART D.L. 1544

Bearings are astronomic and are derived from
OPP and OIP's on East bdy. Blackburn Road
as shown on Plan 15115.

- ⊙ Pcon Standard Concrete Post
- ⊙ P Rock Standard Rock Post
- PP Standard Pipe Post
- IP Standard Iron Post
- P Wooden Post
- LP Lead Plug
- Denoting "Old"
- WT Denoting "Witness"

I, A. DANILUCK of the City of Prince George
British Columbia Land Surveyor make oath and
say that I was present at and did personally
superintend the survey represented by this
plan and that the survey and plan are correct.
The said survey was completed on
the 23rd day of March 1967.

A. Daniluck
A. DANILUCK B.C.L.S.

Sworn before me at Prince George, B.C.
this 3rd day of March 1967

Approved under the Land Registry Act
on the 2nd day of May 1967

W. S. Burdely
Approving Officer
Dept. of Highways

Stephen Elliott
A Commissioner for taking affidavits
within British Columbia
Owner *Frieda E. Schlett*

Witness *D. B. Russell*

N.W. 1/4 L. 634

SW. 1/4 L. 634

McWilliam - Whyte - Gable & Associates		
B.C. LAND SURVEYORS		
KAMLOOPS - PRINCE GEORGE		
Job No	FB-P	FILE NO
66295		