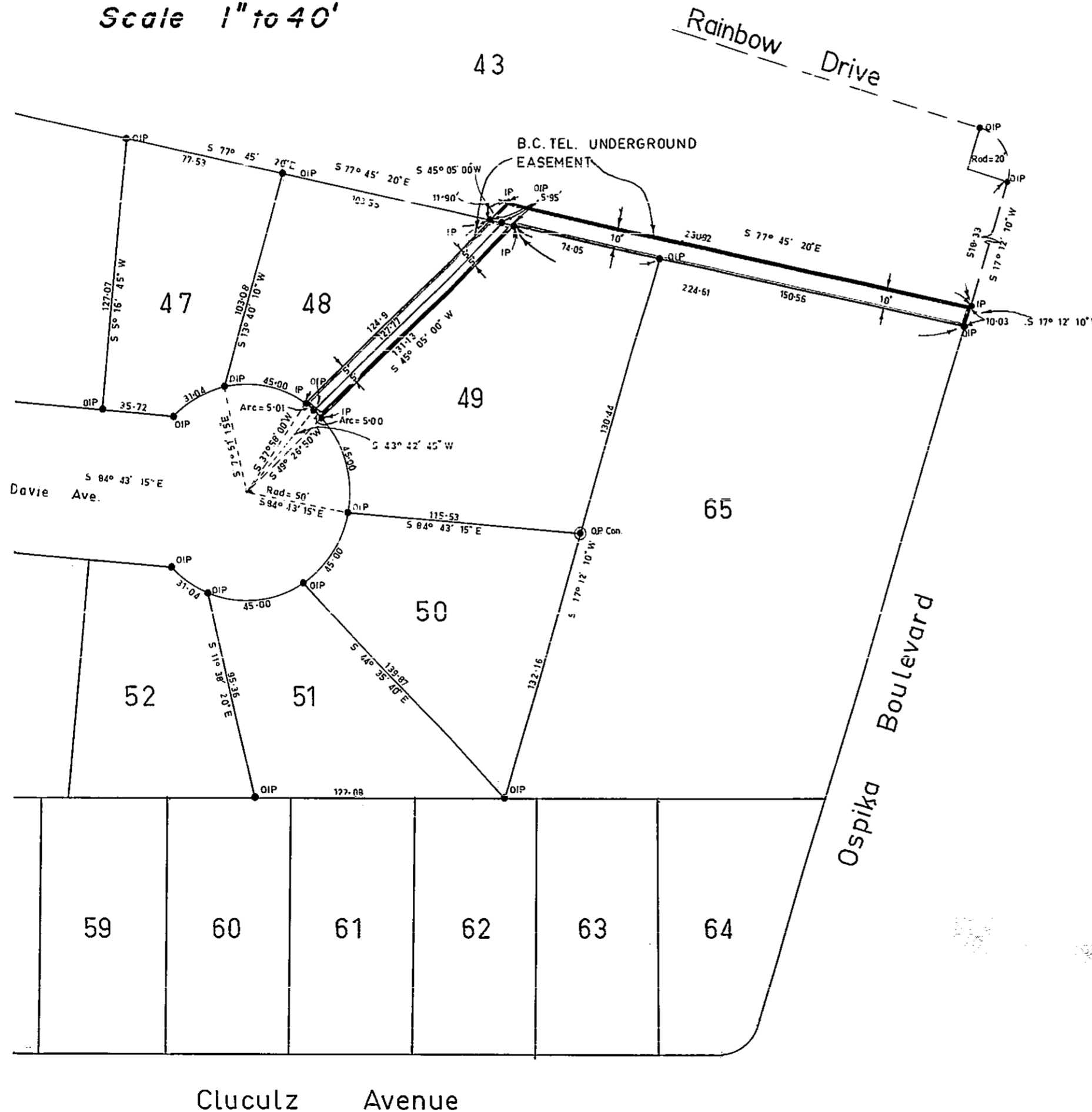


# Plan of Right of Way Through Lots 43, 48 & 49 Plan 16227, District Lot 2507, CARIBOO DISTRICT.

Scale 1" to 40'

PLAN No 16876  
Deposited in the Land Registry Office  
at Prince George on the 12<sup>th</sup> day of April 1967.

*[Signature]*  
Registrar



Bearings are astronomic and are derived from North boundaries of Lot 49 and Lot 65, Plan 16227  
 ● P Con ..... Standard Concrete Post  
 ● P Rock ..... Standard Rock Post.  
 ● P P ..... Standard Pipe Post.  
 ● L P ..... Standard Iron Post.  
 ○ P ..... Wooden Post.  
 ■ L.P ..... Lead Plug.  
 O ..... Denoting "Old"  
 WT ..... Denoting "Witness".

I, A. Daniluck... of the City of Prince George, British Columbia Land Surveyor, make oath and say that I was present at and did personally supervise the survey represented by this plan and that the survey and plan are correct.  
 The said survey was completed on the 3rd day of August 1966.

*[Signature]*

Sworn before me at Prince George, B.C. this 4<sup>th</sup> day of August 1966.

*[Signature]*  
A Commissioner for taking affidavits within British Columbia.

Approved under the Land Registry Act on the 9<sup>th</sup> day of AUG. 1966.

*[Signature]*  
C. E. O'H. P. Eng  
Approving Official

Registered under the Land Registry Act on the 12<sup>th</sup> day of April 1967.

*[Signature]*  
C. E. O'H. P. Eng

McWilliam - Whyte - Serle - Goble	
B.C. Land Surveyors	
Kamloops Prince George.	
Checked	Ref Na65100-33-4