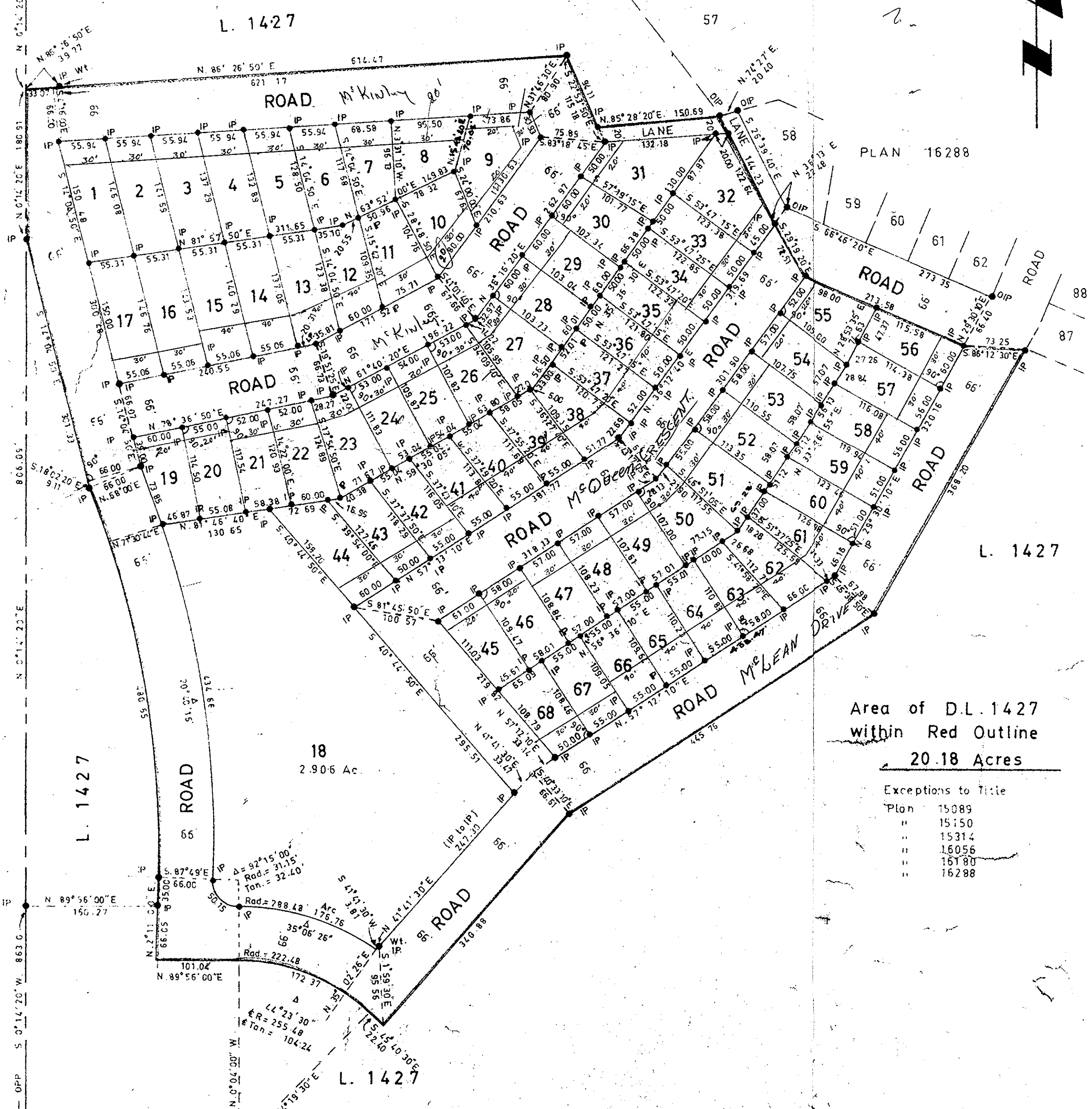


PLAN OF SUBDIVISION OF PART
OF DISTRICT LOT 1427,
CARIBOO DISTRICT. SCALE: 1" = 100'.

PLAN No 16863
Deposited in the Land Registry Office at
Prince George on the 11 day of April 1967

E. H. Gaudin
Registrar



Area of D.L. 1427
within Red Outline
20.18 Acres

Exceptions to Title

Plan	15089
"	15150
"	15314
"	16056
"	16180
"	16288

Bearings are astronomic and are derived from
OPPs at N.W. and S.W. Corners of Lot 1427
as shown on Plan 15314

- Pcon Standard Concrete Post.
- P Rock Standard Rock Post.
- PP Standard Pipe Post
- IP Standard Iron Post
- P Wooden Post
- LP Lead Plug
- Denoting "Old"
- WT Denoting "Witness"

I, A Dagituck of the City of Prince George
British Columbia Land Surveyor, make oath and
say that I was present and did personally
superintend the survey represented by this
plan and that the survey and plan are correct.
The said survey was completed on
the 3rd day of April 1967

A. Dagituck

Sworn before me at Prince George, B.C.
this 7th day of April 1967

W. J. G. ...
A Commissioner for taking affidavits
within British Columbia

Approved under the Land Registry Act
on the 10th day of APRIL 1967.

C. E. Best, P. Eng.
Approving Officer
City of Prince George

Owner *H. McLean*
Secretary *...*
Witness *...*

W. Halliwell
Blair

McWilliam—Whyte—Gobie & Associates		
B.C. LAND SURVEYORS		
KAMLOOPS—PRINCE GEORGE		
Job No	FB-P	FILE No
64027-II		