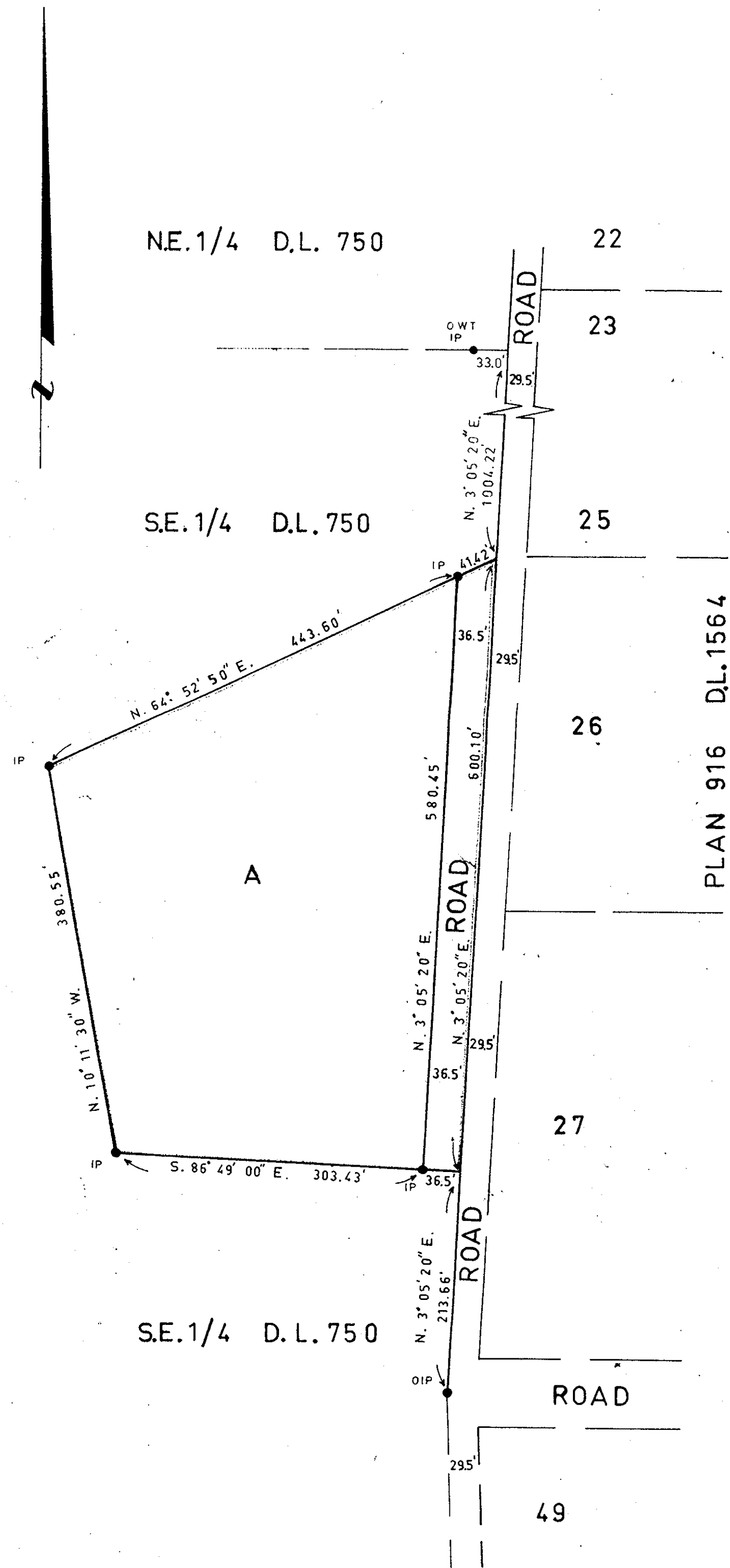


PLAN OF SUB-DIVISION OF  
PART S.E. 1/4 D.L. 750  
CARIBOO DISTRICT.  
SCALE: 1"=100'

PLAN No. 16850

Deposited in the Land Registry Office at  
Prince George on the 23<sup>rd</sup> day of March, 1967.

*J. H. L. Laidlaw*  
Registrar



Bearings are astronomic and are derived from  
part West Boundary SE 1/4 D.L. 750

- P.con. .... Standard Concrete Post.
- ⊙ P.Rock .... Standard Rock Post.
- P.P. .... Standard Pipe Post.
- I.P. .... Standard Iron Post.
- W. .... Wooden Post.
- L.P. .... Lead Plug.
- .... Denoting "Old"
- WT. .... Denoting "Witness"

A. Donituck, of the City of Prince George,  
British Columbia Land Surveyor, make oath and  
say that I was present at and did personally  
superintend the survey represented by this  
plan and that the survey and plan are correct.  
The said survey was completed on  
the 14<sup>th</sup> day of Sept., 1966.

*A. Donituck*

Sworn before me at PRINCE GEORGE  
this 26<sup>th</sup> day of September, 1966.

Approved under the Land Registry Act  
on the 12<sup>th</sup> day of March, 1967.

*W. S. ...*  
Approving Officer

*W. S. ...*  
A Commissioner for taking Affidavits  
within British Columbia, c/o  
*Walter ...*  
Owner *Louise B. ...*

Witness *Patricia Savage*

McWilliam - Whyte, Gable & Assoc.  
B.C. Land Surveyors  
Kamloops - Prince George  
Checked F S D X REF. NO. 66189