

Plan No 16840

Deposited in the Land Registry Office of Prince George, B.C. on the 16th day of March 1967

Registrar

Plan Of Subdivision
Prepared Pursuant to the Replotting Provisions of the
Municipal Act of Parcel shown outlined in Red on
Reference Plan

Lots 1, 2, 3, 9 to 22 inclusive, 31 to 36 inclusive,
Block 60. Lots 1 to 8 inclusive, Block 59, and Block E,
PLAN 1268, DISTRICT LOT 343

Cariboo District
Scale 1" = 40'

LEGEND

- Bearings are astronomic, derived from DPP's on Northernly side of 3rd Ave, Plan 13808, shown as S 46° 55' 30" E.
- IP-----Iron post set.
- OPC-----Concrete post found.
- OPCa-----Concrete post found.
- OPR-----Rock post found.
- OLP-----Lead plug found.
- 0-----Denoting 'Old'.

I, R.J. Come of the City of Prince George, British Columbia Land Surveyor, make oath and say that I was present at and did personally supervise the survey represented by this plan and that the survey and plan are correct. The said survey was completed on the 17th day of Oct. 1966

Sworn before me at Prince George, B.C. this 16th day of Nov. 1966

McBuckley
A Commissioner for taking affidavits within British Columbia

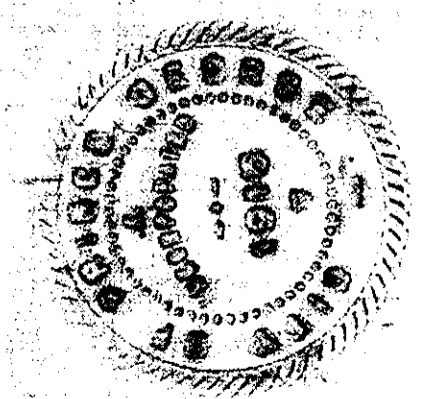
Approved under the Land Registry Act this 16th day of Nov. 1967

C. D. P. E.
Approving Officer
City of Prince George

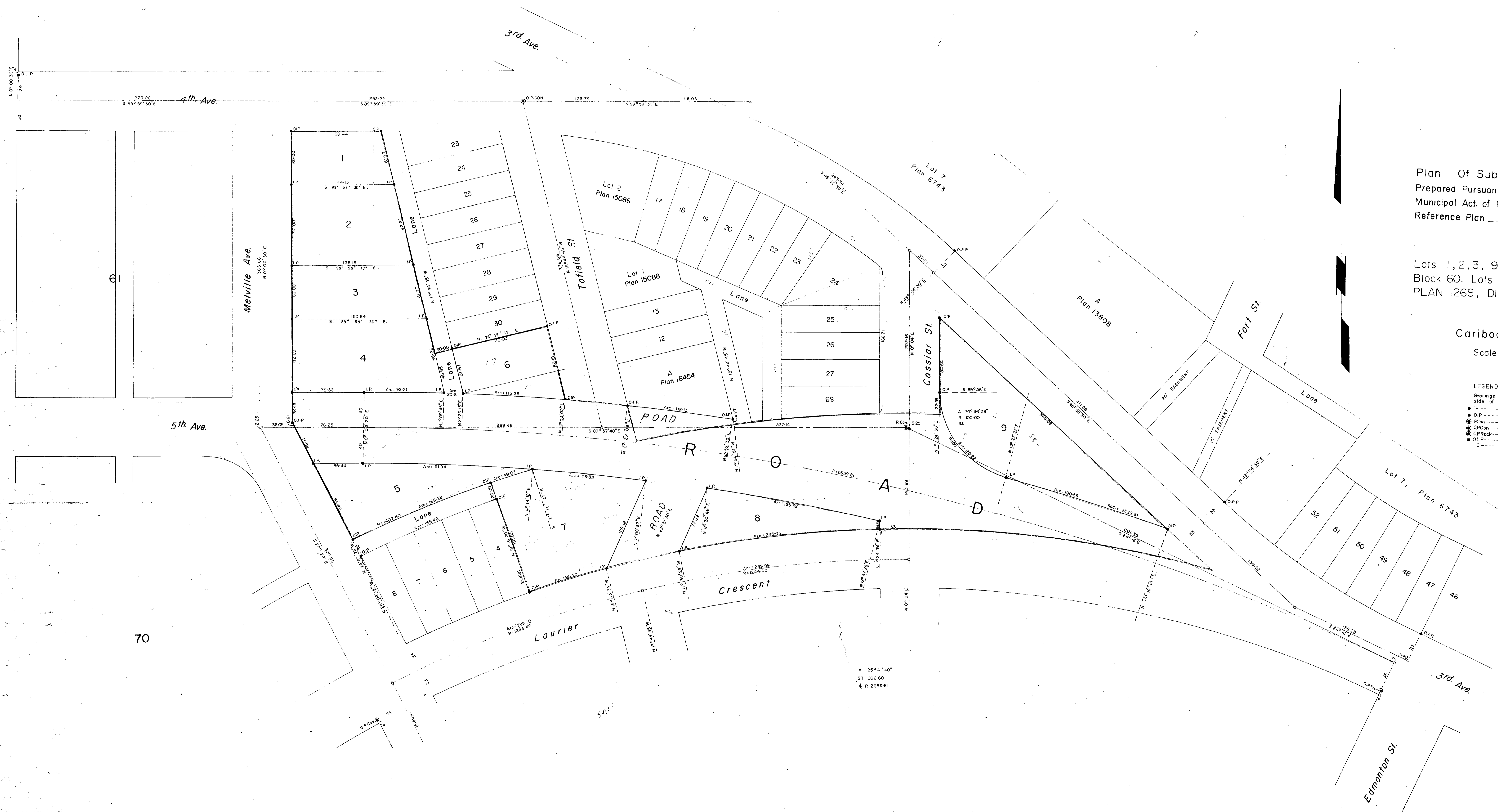
The Seal of the City of Prince George was affixed hereto in the presence of

A. D. Dyer
Mayor

Ann Thompson
City Clerk



McWilliam, Whyte, Gable & Assoc.
British Columbia Land Surveyors
1595 5th Ave, Prince George, B.C.



70