

PLAN OF SUBDIVISION OF
 LOTS 59 & 60 - PLAN 16573
DISTRICT LOT 4221
 CARIBOO DISTRICT - BRITISH COLUMBIA

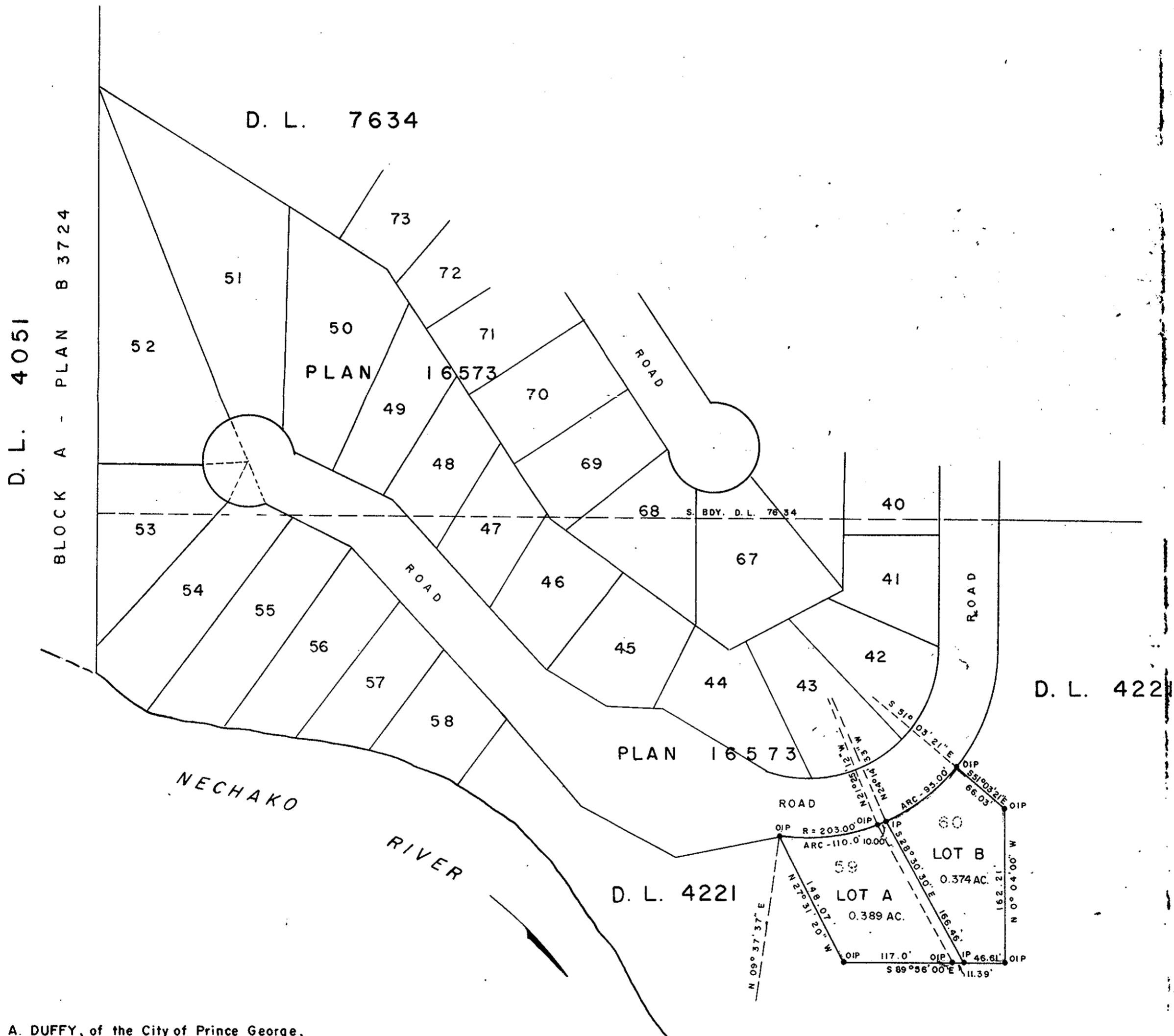
SCALE: 1" = 100'

NOTE: Bearings are astronomic, derived from the
 East Boundary of Lot 60, Plan 16573.

LEGEND: • OIP denotes an old iron pin found.
 • IP denotes an iron pin placed on this survey.

PLAN No **16830**
 Deposited in the Land Registry
 Office at Prince George, B.C. this
 10th day of March, 1967.

Registrar *[Signature]*



I, DONALD A. DUFFY, of the City of Prince George,
 a British Columbia Land Surveyor make oath and say
 that I was present at and did personally superintend
 the survey represented by this plan and that the survey
 and plan are correct. The said survey was completed
 on the 24th day of February, 1967.

[Signature of Donald A. Duffy]
 B. C. L. S.

NECHAKO VIEW DEVELOPMENTS LTD.

[Signature of Percy S. Church]

Approved under the Land Registry Act
 this 9th day of March, 1967.

[Signature]
 Approving Officer, Dept. of Highways.

Sworn before me this 9th
 day of MARCH, 1967.

[Signature]
 A Commissioner for taking Affidavits
 within the Province of British Columbia.

W. D. USHER & ASSOCIATES
 LAND SURVEYORS
 PRINCE GEORGE - B. C.
 2105