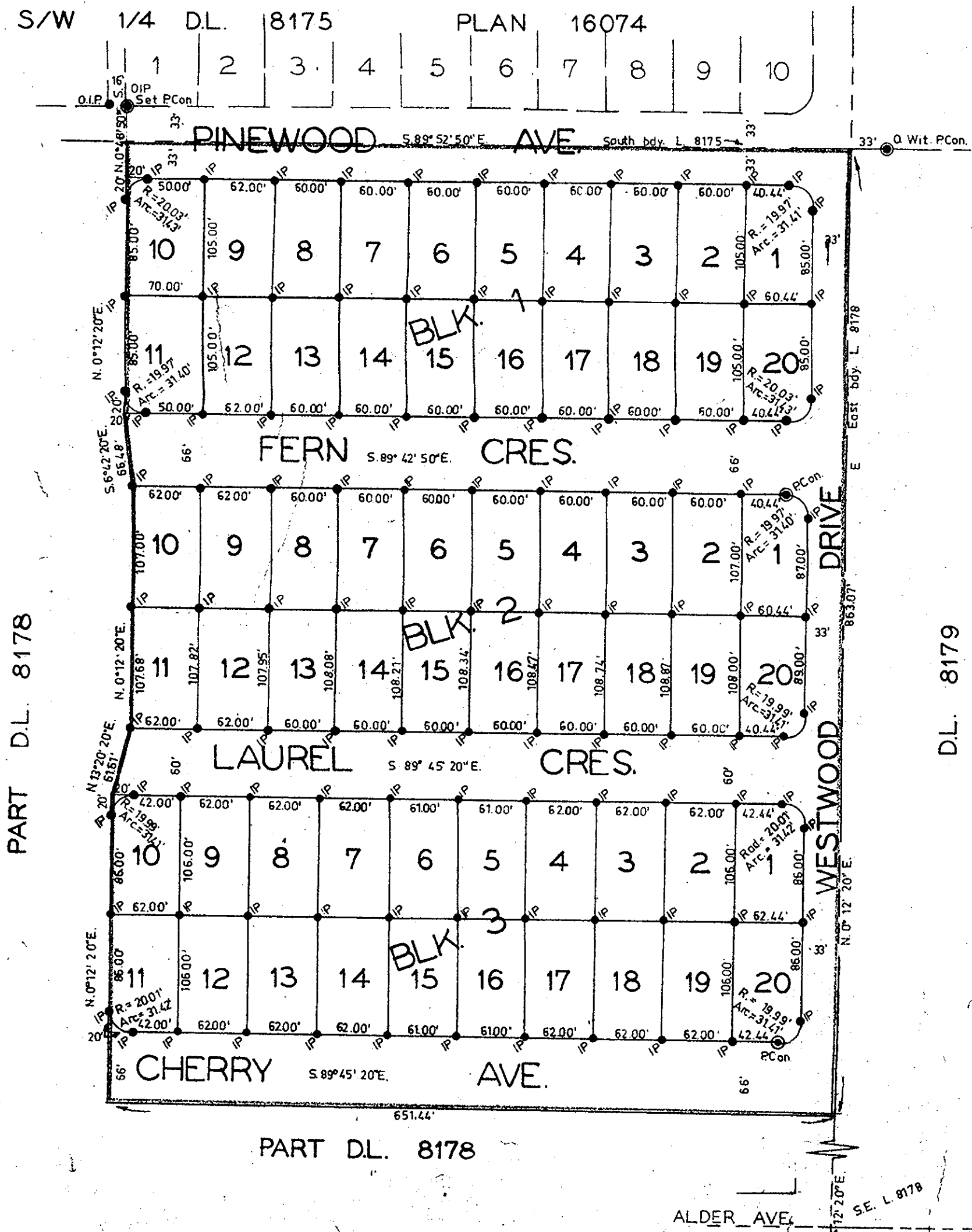


PLAN OF SUBDIVISION OF
PART DISTRICT LOT 8178,
EXCEPT PCL. A, OF D.D. 74102M,
CARIBOO DISTRICT.

SCALE: 1" = 100'

PLAN No 16808
Deposited in the Land Registry Office at
PRINCE GEORGE on the day of 19.....

Registrar



Bearings are astronomic and are derived from the South boundary of DL 8178, as shown on Plan No 16074.

- P.con. Standard Concrete Post.
- P.Rock Standard Rock Post.
- P.P. Standard Pipe Post.
- I.P. Standard Iron Post.
- P. Wooden Post.
- L.P. Lead Plug.
- O. Denoting "Old"
- WT. Denoting "Witness"

I, A. Daniluck, of the City of Prince George, British Columbia Land Surveyor, make oath and say that I was present at and did personally superintend the survey represented by this plan and that the survey and plan are correct. The said survey was completed on the 7th day of January, 1967.

A. Daniluck
A. DANILUCK, B.C.L.S.

Sworn before me at PR. GEORGE this 24th day of February, 1967.

[Signature]
A Commissioner for taking affidavits within British Columbia.

Approved under the Land Registry Act on the day of 19.....

Approving Officer

Owner

PRINCE GEORGE GOLF & COUNTRY CLUB, LTD.

Witness

PRES.

SEC.