

PLAN N^o 16774
 Deposited in the Land Registry
 Office at Prince George, B.C. this
3rd day of FEBRUARY, 1967

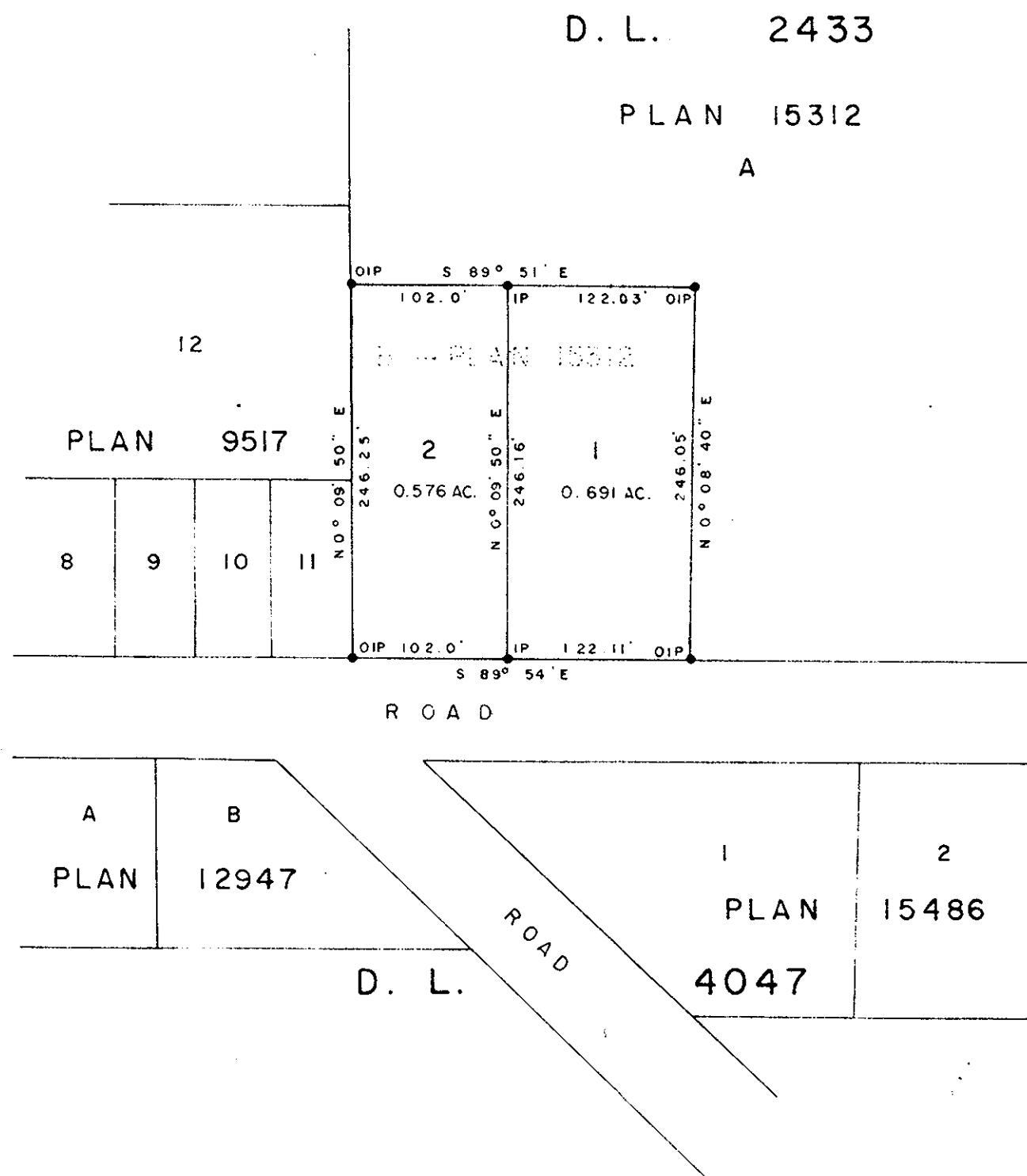
P. H. Gies
 Registrar

PLAN OF SUBDIVISION OF
 LOT B - PLAN 15312
DISTRICT LOT 2433
 CARIBOO DISTRICT - BRITISH COLUMBIA

SCALE: 1" = 100'

NOTE: Bearings are astronomic, derived from the
 West Boundary of Lot B, Plan 15312.

LEGEND: • OIP denotes an old iron pin found.
 • IP denotes an iron pin placed on this survey.



I, DONALD A. DUFFY, of the City of Prince George, a British Columbia Land Surveyor make oath and say that I was present at and did personally superintend the survey represented by this plan and that the survey and plan are correct. The said survey was completed on the 26th day of October, 1966.

Donald A. Duffy
 B. C. L. S.

Sworn before me this 7th
 day of OCTOBER, 1966

[Signature]
 A Commissioner for taking Affidavits
 within the Province of British Columbia.

M. Gies
 Owner

 Witness

BEAVER LUMBER COMPANY
[Signature]
 [Signature]

Approved under the Land Registry Act
 this 9th day of December, 1966

[Signature]
 Approving Officer, Dept. of Highways.

W. D. USHER & ASSOCIATES
 LAND SURVEYORS
 PRINCE GEORGE - B. C.
 BL 45 1925A