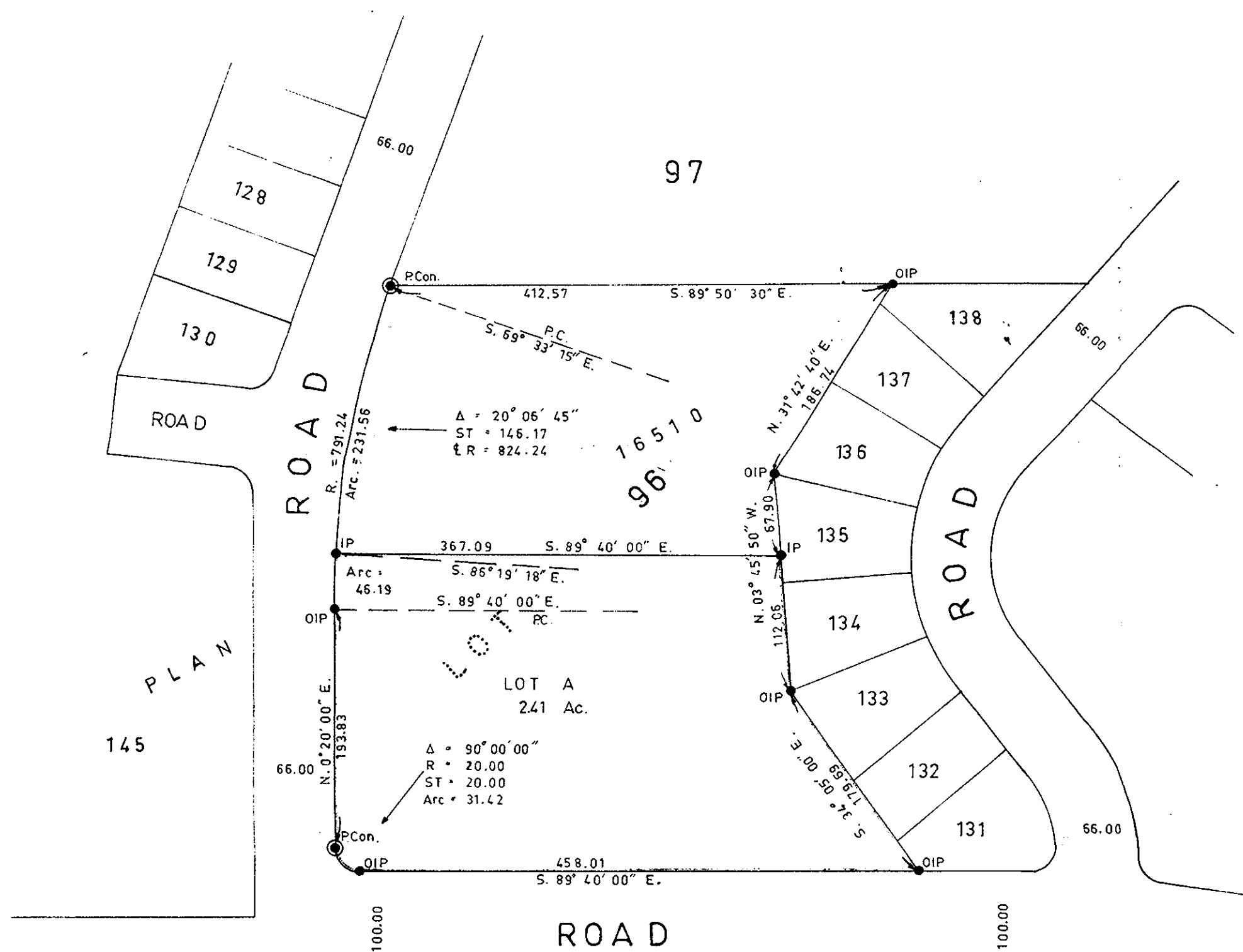


PLAN OF SUBDIVISION OF PART OF  
 LOT 96, PLAN 16510, OF DISTRICT  
 LOT 2610.  
 CARIBOO DISTRICT.  
 SCALE: 1" = 100'

PLAN N<sup>o</sup> 16764  
 Deposited in the Land Registry Office at  
 Prince George on the 31 day of JAN. 1967  
 Registrar



Bearings are astronomic and are derived from  
 O.P.Con. & O.I.P. along West Bdy. of Lot 96,  
 shown as N. 0° 20' 00" E.

- P.Con. .... Standard Concrete Post.
- P.Rock .... Standard Rock Post.
- P.P. .... Standard Pipe Post.
- I.P. .... Standard Iron Post.
- P. .... Wooden Post.
- L.P. .... Lead Plug.
- .... Denoting "Old"
- WT. .... Denoting "Witness."

I, V. Bartell, of the City of Prince George,  
 British Columbia Land Surveyor, make oath and  
 say that I was present at and did personally  
 superintend the survey represented by this  
 plan and that the survey and plan are correct.  
 The said survey was completed on  
 the 16th day of November, 1966.  
 Victor Bartell  
 B.C.L.S.

Sworn before me at Prince George, B.C.  
 this 23 day of November, 1966.

Approved under the Land Registry Act  
 on the 30th day of JAN. 1967.

C. E. Hot P. Eng.  
 Approving Officer  
 City of Prince George

Witness  
 Owner: Heau  
 H. MAYOR  
 Witness: C. J. Thomson  
 CLERK

PLAN 847

McWilliam - Whyte - Goble & Associates  
 B.C. Land Surveyors  
 Kamloops - Prince George  
 CHECKED f s d x Ref. No. 66100-41