

Plotted (GU)

PLAN OF SUBDIVISION OF  
LOT 1, PLAN 8970  
DISTRICT LOT 4048  
CARIBOO DISTRICT - BRITISH COLUMBIA

PLAN N<sup>o</sup> 16759

SCALE: 1" = 100'

Deposited in the Land Registry  
Office at Prince George, B.C. this  
22<sup>nd</sup> day of JANUARY, 1966

NOTE: Bearings are astronomic, derived from the  
South Boundary of Lot 1, Plan 8970.

Registrar

LEGEND: ● OIP denotes an old iron pin found  
● IP denotes an iron pin placed on this survey.  
● PP denotes a pipe post placed on this survey.

S.W. 1/4 OF SE. 1/4  
D.L. 2424

D.L. 2424

2

1

8

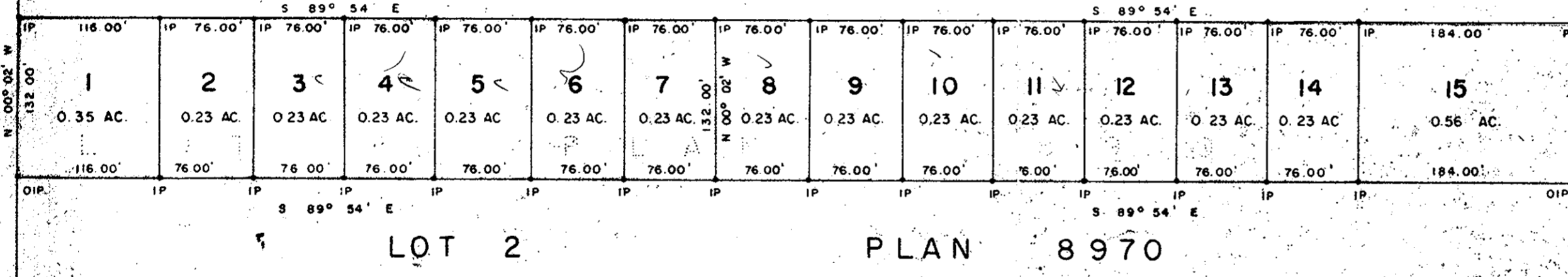
PLAN 11273

PLAN 8935

ROAD

KELLY ROAD

N.W. 1/4 OF NE. 1/4  
D.L. 4048



LOT 2

PLAN 8970

D.L. 4048



I, DONALD A. DUFFY, of the City of Prince George,  
a British Columbia Land Surveyor, make oath and say  
that I was present at and did personally superintend  
the survey represented by this plan and that the survey and  
plan are correct. The said survey was completed  
on the 27th day of July, 1966.

*[Signature]*  
B.C.L.S.

Sworn before me this 29<sup>th</sup>  
day of July, 1966.

A Commissioner for taking Affidavits  
within the Province of British Columbia.

Approved under the Land Registry Act  
this 13<sup>th</sup> day of September, 1966.

REAPPROVED:  
*[Signature]*  
APPROVING OFFICER, DEPT. OF HWYS.  
DECEMBER 19<sup>th</sup>, 1966.

*[Signature]*  
Approving Officer, Dept. of Highways

Owner

Witness

W.D. USHER & ASSOCIATES  
LAND SURVEYORS  
PRINCE GEORGE - B.C.  
BN 1-2 183