

THE GREAT WEST LIFE ASSURANCE COMPANY

MORTGAGEE

J. B. Arque
J. B. ARQUE ASSISTANT TREASURER

W. Maxwell
W. MAXWELL AUTHORIZED SIGNATURE

DELTA PROPERTIES LIMITED

LESSEE

John S. Davidson
JOHN S. DAVIDSON CHAIRMAN

Charles H. Willis
Charles H. Willis Secretary

PREMIUM ACCEPTANCE CORPORATION LTD
MORTGAGEE

J. A. Elliott
J. A. ELLIOTT (President)

K. R. Turner
K. R. TURNER (SECRETARY)

FORT GEORGE HOTEL LTD.
LESSOR

B. K. Baldwin
B. K. BALDWIN, PRESIDENT
Charles A. Allard
Charles A. Allard Director

PLAN No 16747

Deposited in the Land Registry Office
at PRINCE GEORGE on the 14 day of January 1967

J. V. Carlson
Registrar

#16747

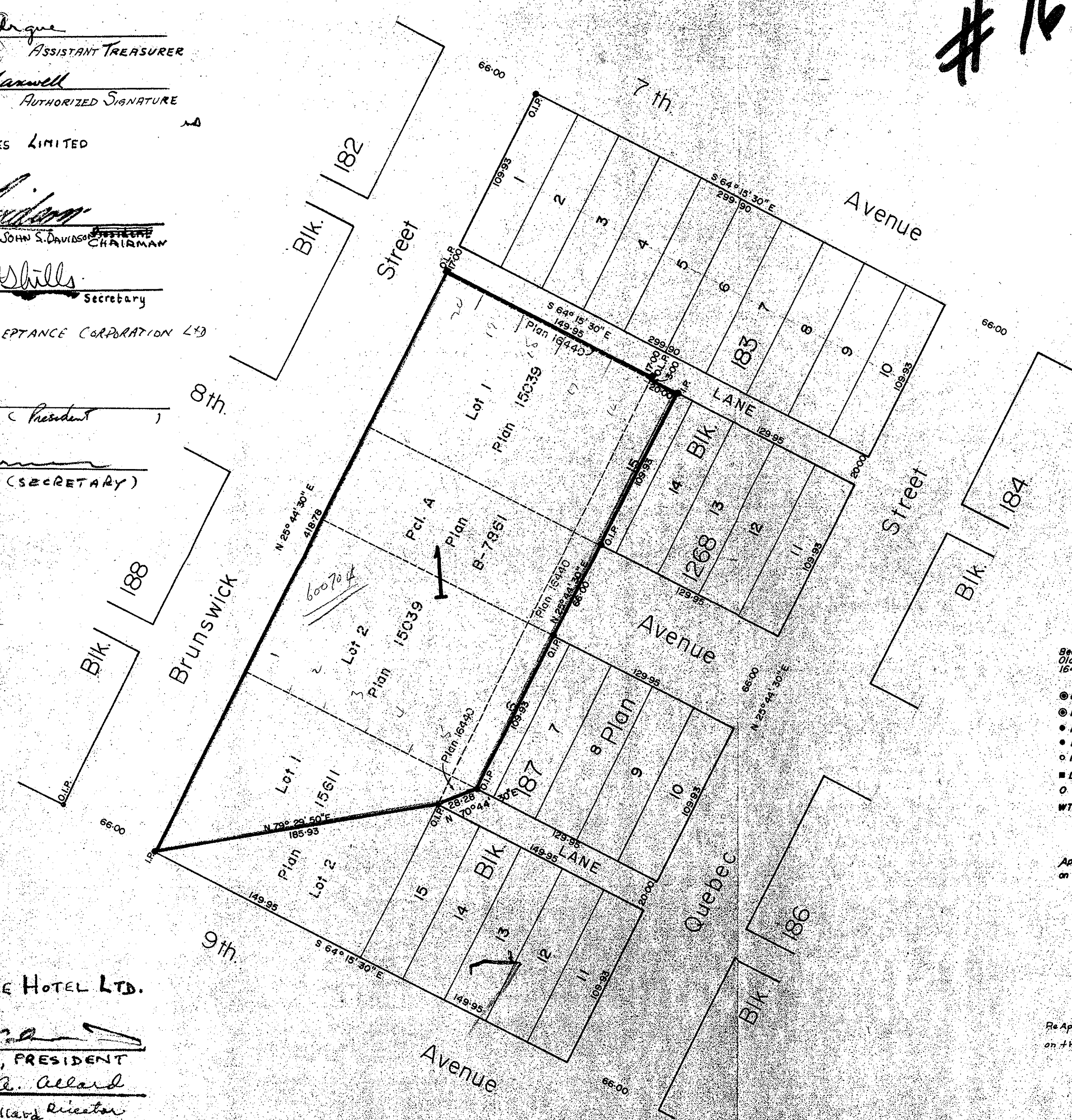
COPIES SENT TO ENGINEERING
20/3/67 ad

Plan of Subdivision of
Lots 1 & 2, PLAN 15039; Lot 1, PLAN 15611;
Pcl. A, PLAN B7861; Parts of Lot 15, Block 183
and Lot 6, Block 187, PLAN 1268; and Closed
Roads and Lanes PLAN 16440, DISTRICT LOT 343.

Cariboo District

Scale 1" = 50'

#16747



- Settings are astronomic and are derived from
Old lead plugs on the northerly boundary of Plan
16440 shown as S 64° 15' 30\" E.
- Pcon. ----- Standard Concrete Post.
 - P Rock ----- Standard Rock Post.
 - PP ----- Standard Pipe Post.
 - I.P. ----- Standard Iron Post.
 - P. ----- Wooden Post.
 - L.P. ----- Lead Plug.
 - ----- Denoting "Old"
 - WT. ----- Denoting "Witness"

I, R. J. GOBLE of the CITY OF PRINCE GEORGE
British Columbia Land Surveyor, make oath and
say that I was present at and did personally
superintend the survey represented by this
plan and that the survey and plan are correct

The said survey was completed on
the 23 day of AUGUST, 1966.

Sworn before me at Prince George, B.C.
this 24th day of August, 1966.

Approved under the Land Registry Act
on the 13th day of SEPT. 1966

C. E. Olot P. Eng.
Approving Officer
CITY OF PRINCE GEORGE

W. J. S. Sells
A Commissioner for taking affidavits
within British Columbia.

Owner

Witness

Re Approved under the Land Registry Act
on the 5th day of Jan. 1967

C. E. Olot P. Eng.
Approving Officer
CITY OF PRINCE GEORGE

McWilliam	Whyte	Serie	Goble
B.C. Land Surveyors			
Kamloops - Prince George			
Checked	1	5	1
			Ref. No. 66100-24