

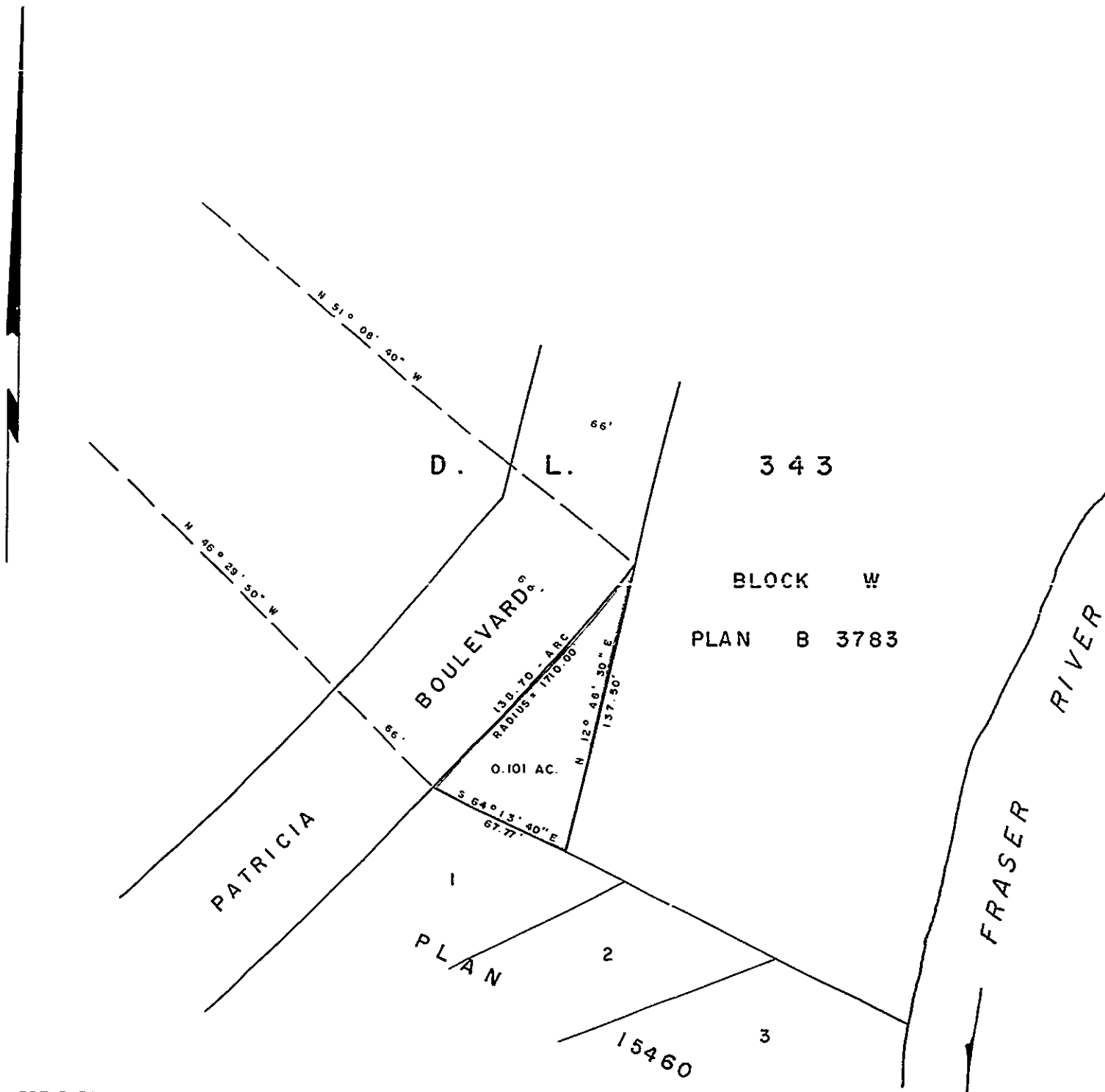
EXPLANATORY PLAN TO ACCOMPANY BYLAW
N^o 1905 OF THE CORPORATION OF THE CITY
OF PRINCE GEORGE, BRITISH COLUMBIA, CLOSING
PART OF TAYLOR DRIVE, PLAN 1268, ADJACENT TO
BLOCK W - PLAN B 3783
DISTRICT LOT 343
CARIBOO DISTRICT - BRITISH COLUMBIA

SCALE : 1" = 50'

NOTE : Part of Taylor Drive to be closed
is shown outlined in red.

PLAN N^o 16739
Deposited in the Land Registry
Office at Prince George, B.C.
this 23rd day of Jan, 1967

[Signature]
Registrar



CERTIFIED CORRECT

This 27th day of October, 1966.

[Signature]
D. A. DUFFY, B. C. L.S.