

PLAN OF SUBDIVISION OF PART OF  
**FRACTIONAL N.E. 1/4 DISTRICT LOT 4040**  
 EXCEPT PLANS 9202, 13000, & 14151  
 CARIBOO DISTRICT - BRITISH COLUMBIA

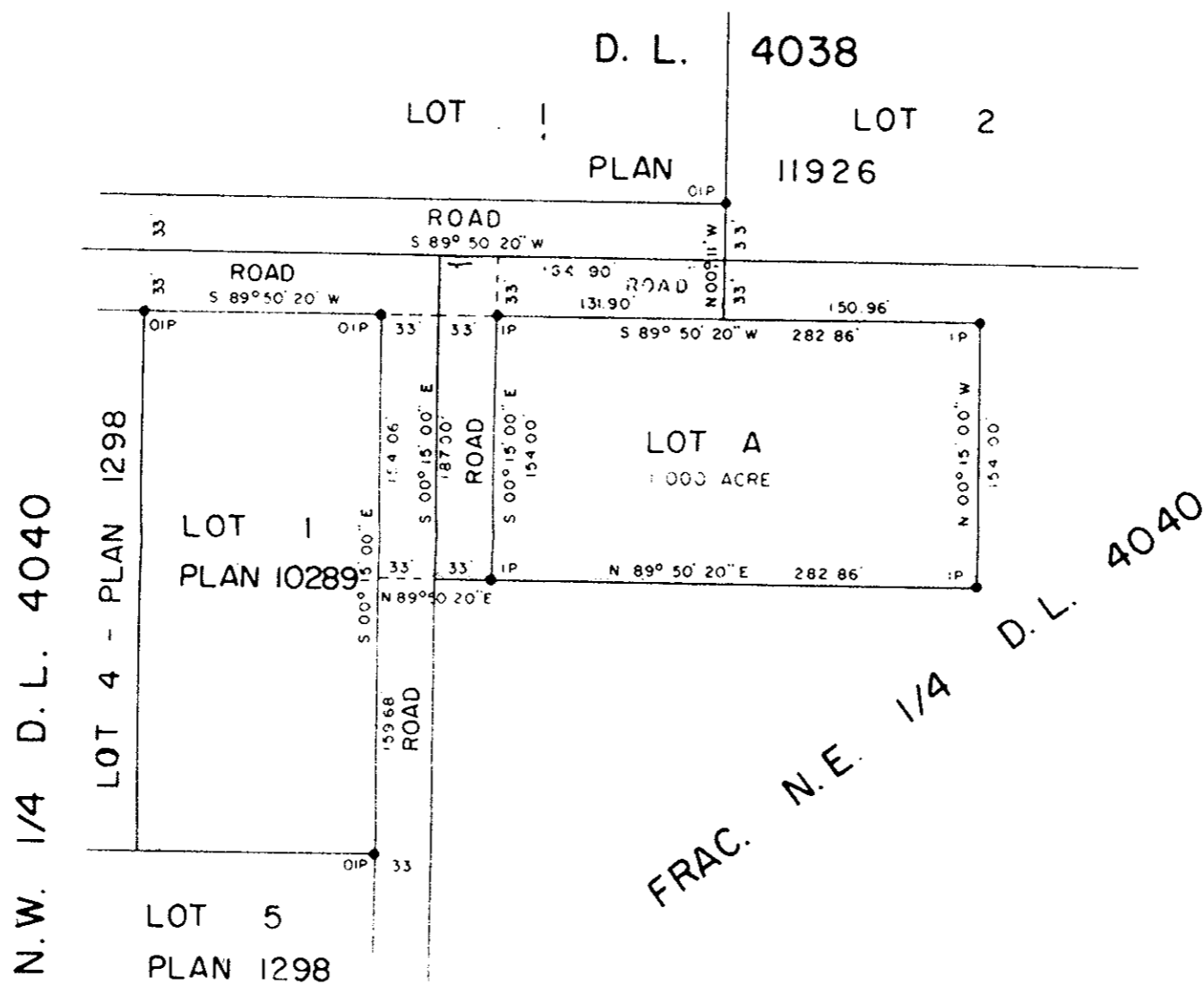
SCALE: 1" = 100'

PLAN No. **16738**  
 Deposited in the Land Registry  
 Office at Prince George, B.C. this  
 12<sup>th</sup> day of **JANUARY**, 1967.

*P. H. Campbell*  
 Registrar

NOTE: Bearings are astronomic, derived from the  
 east boundary of Lot 1, Plan 10289.

LEGEND: ● OIP denotes an old iron pin found.  
 ● IP denotes an iron pin placed on this survey.



I, DONALD A. DUFFY of the City of Prince George,  
 a British Columbia Land Surveyor, make oath and say  
 that I was present at and did personally superintend  
 the survey represented by this plan and that the survey  
 and plan are correct. The said survey was completed  
 on the 3rd day of August, 1964.

Sworn before me this 12<sup>th</sup>  
 day of August, 1964.

*W. D. Usher & Associates*  
 A Commissioner for Taking Affidavits  
 within the Province of British Columbia.

*Donald A. Duffy*  
 Owner

*W. D. Usher & Associates*  
 Witness

Approved under the Land Registry Act  
 this 3<sup>rd</sup> day of January, 1967.

*R. G. ...*  
 Approving Officer, Dept. of Highways

W. D. USHER & ASSOCIATES  
 LAND SURVEYORS  
 PRINCE GEORGE - B.C.  
 AC 7 1394