

D.L. 953

PLAN No 16734

Deposited in the Land Registry Office
at Prince George on the 10th day of June 1967

[Signature]
Registrar

Plan of Subdivision of Part of N.E. 1/4 District Lot 954. CARIBOO DISTRICT.

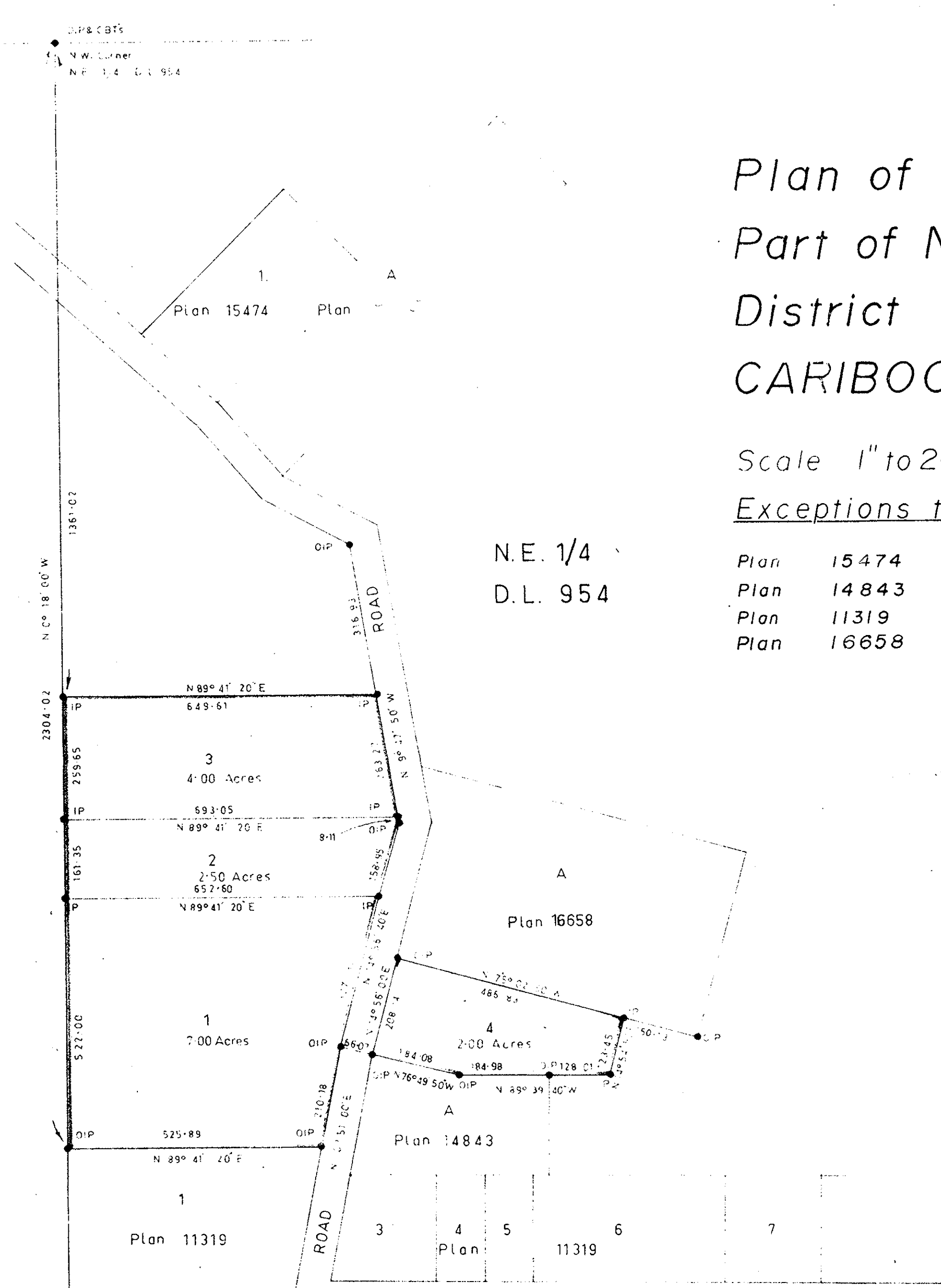
Scale 1" to 200'

Exceptions to Title

Plan 15474
Plan 14843
Plan 11319
Plan 16658

Fraction N.W. 1/4 D.L. 954

S.W. 1/4 D.L. 954 S.E. 1/4



Bearings are astronomic and are derived from JIP's along North Boundary of Lot 1, Plan 11319 shown as N 89° 41' 20" E

- ⊙ P.con Standard Concrete Post.
- P.Rock Standard Rock Post.
- PP Standard Pipe Post.
- IP Standard Iron Post.
- P Wooden Post.
- L.P Lead Plug.
- O Denoting "Old"
- WT Denoting "Witness"

I, V. Bartell... of the City of Prince George, British Columbia Land Surveyor, make oath and say that I was present at and did personally supervise the survey represented by this plan and that the survey and plan are correct. The said survey was completed on the 2nd day of August, 1966.

[Signature]
V. Bartell

Sworn before me at Prince George this 3 day of August 1966.

Approved under the Land Registry Act on the 1st day of December 1966.

[Signature]
Approving Officer

[Signature]
A Commissioner for taking of Oaths within British Columbia.

Owner *[Signature]*

Witness *[Signature]*