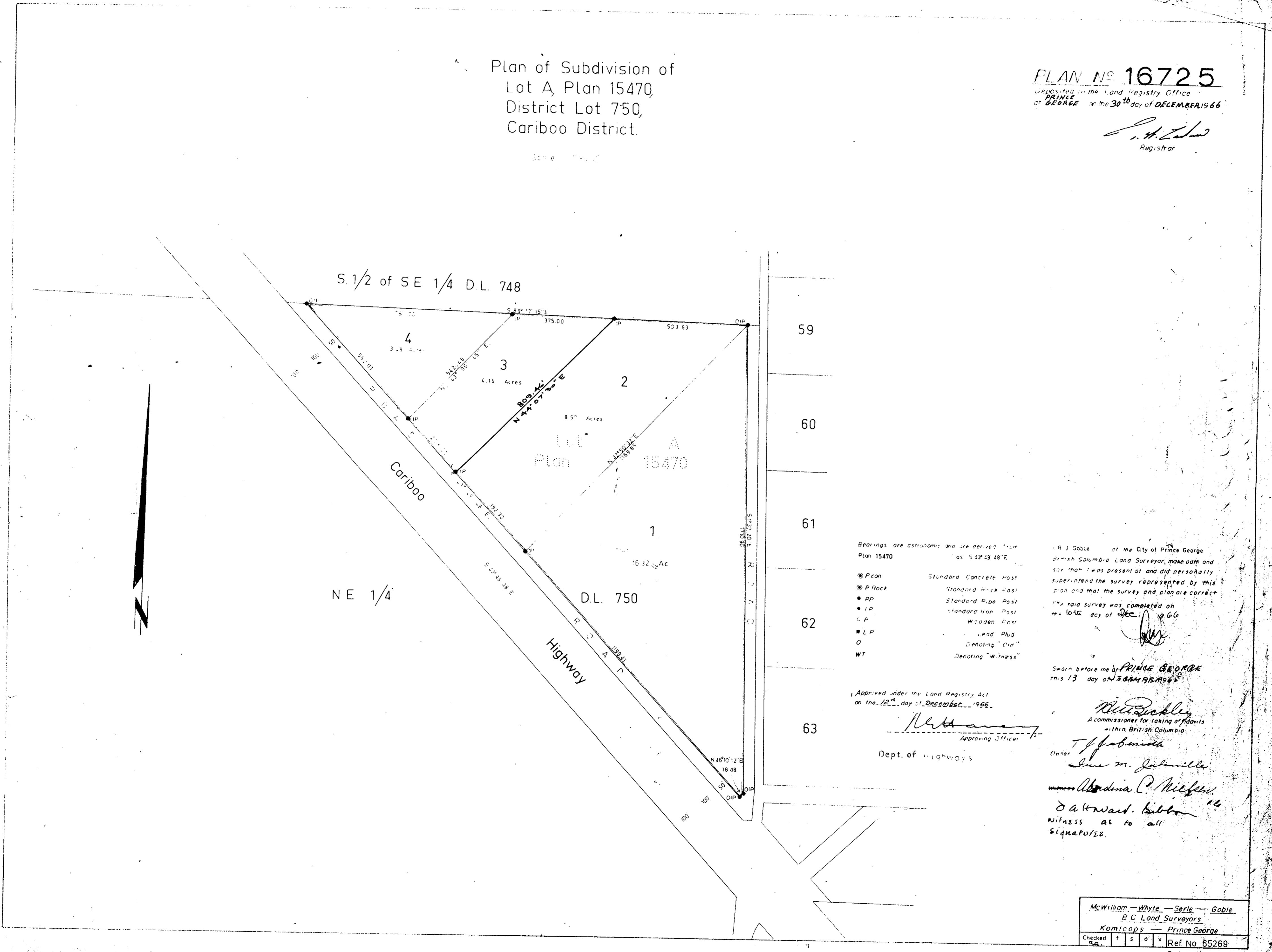


Plan of Subdivision of
 Lot A, Plan 15470,
 District Lot 750,
 Cariboo District.

PLAN No 16725

deposited in the Land Registry Office
 at PRINCE GEORGE on the 30th day of DECEMBER, 1966

C. H. Goble
 Registrar



Bearings are astronomic and are derived from
 Plan 15470 as S 27° 48' 48" E

- Pcon Standard Concrete Post
- P Rock Standard Pipe Post
- PP Standard Pipe Post
- IP Standard Iron Post
- WP Wooden Post
- L P Lead Plug
- O Gearing "Chie"
- WT Denoting "Witness"

I, R. J. Goble of the City of Prince George
 British Columbia Land Surveyor, make oath and
 say that I was present at and did personally
 superintend the survey represented by this
 plan and that the survey and plan are correct.
 The said survey was completed on
 the 10th day of Dec. 1966

Sworn before me at PRINCE GEORGE
 this 13th day of DECEMBER, 1966

Approved under the Land Registry Act
 on the 12th day of DECEMBER, 1966

W. J. Goble
 Approving Officer
 Dept. of Highways

W. J. Goble
 Commissioner for Taking of Oaths
 within British Columbia

Owner
T. J. Goble

June M. Goble

Abundina P. Goble

David Ward. Goble
 Witness as to all
 Signatures.

McWilliam - Whyte - Serle - Goble
 B. C. Land Surveyors
 Kamloops - Prince George

Checked
 Ref No 65269

Ref. No. 65322